



Community Meetings: In-System Storage Evaluation

Tuesday, August 23, 2016



Presentation Overview

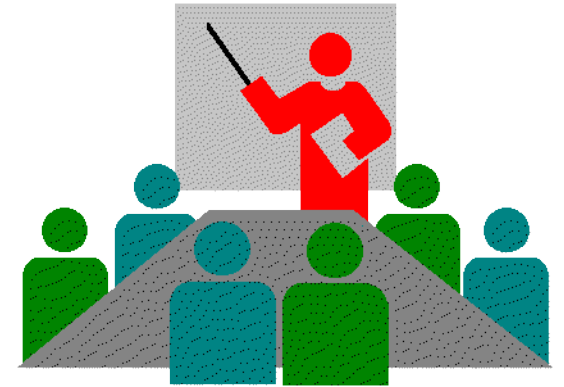
- Welcome & Introductions
- Meeting Guidelines
- Program Background/Integrated Solutions
- Why In-System Storage (Basins 2 & 3)?
- Selection Process: Alternatives Analysis
- Public Comments
- Open House



Meeting Guidelines

Please ...

- Hold questions & comments until the end of the presentation
- Wait until called upon to speak
- Only one speaker at a time
- Provide constructive comments
- Stay on topic
- Turn off or mute all mobile devices



Purposes of Tonight's Meeting

- Provide program overview
- Describe project and site alternatives
- **Obtain community feedback** on alternatives

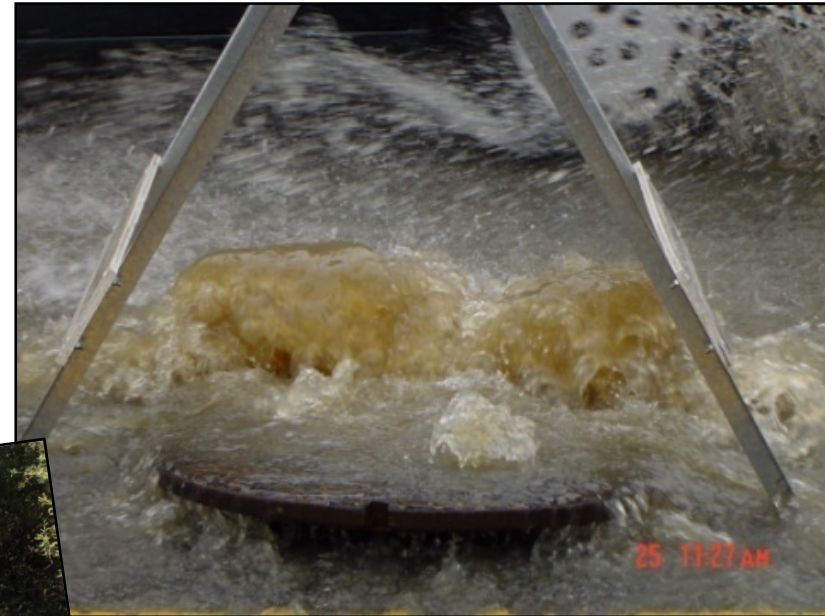


Wastewater Management System



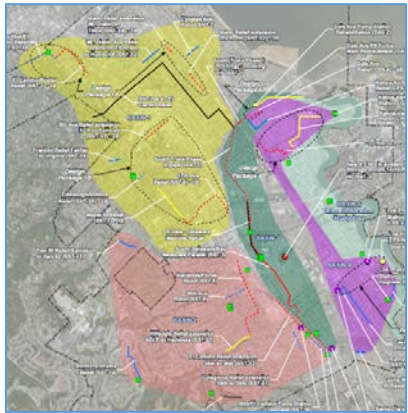


Insufficient Capacity – Sewer Overflows



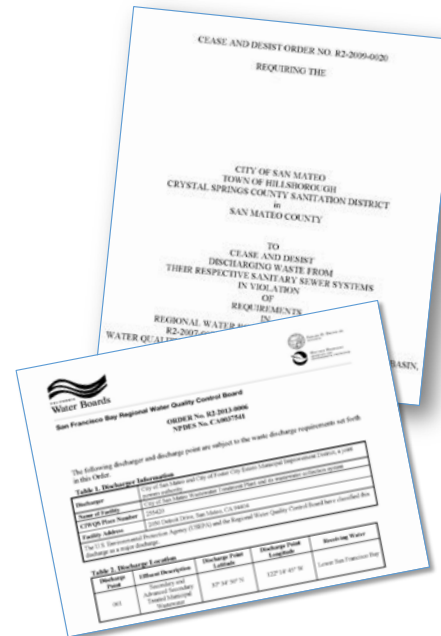
Program Drivers & Objectives

Replace Aging Infrastructure



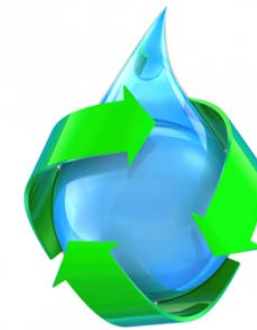
Collection System

Provide Higher Levels of Treatment & Capacity Assurance



RWQCB Cease & Desist Order
NPDES Permit

Address Sustainability, Climate Change, & Biosolids/Energy



Water Re-Use Partnerships

WWTP



Institute for Sustainable Infrastructure

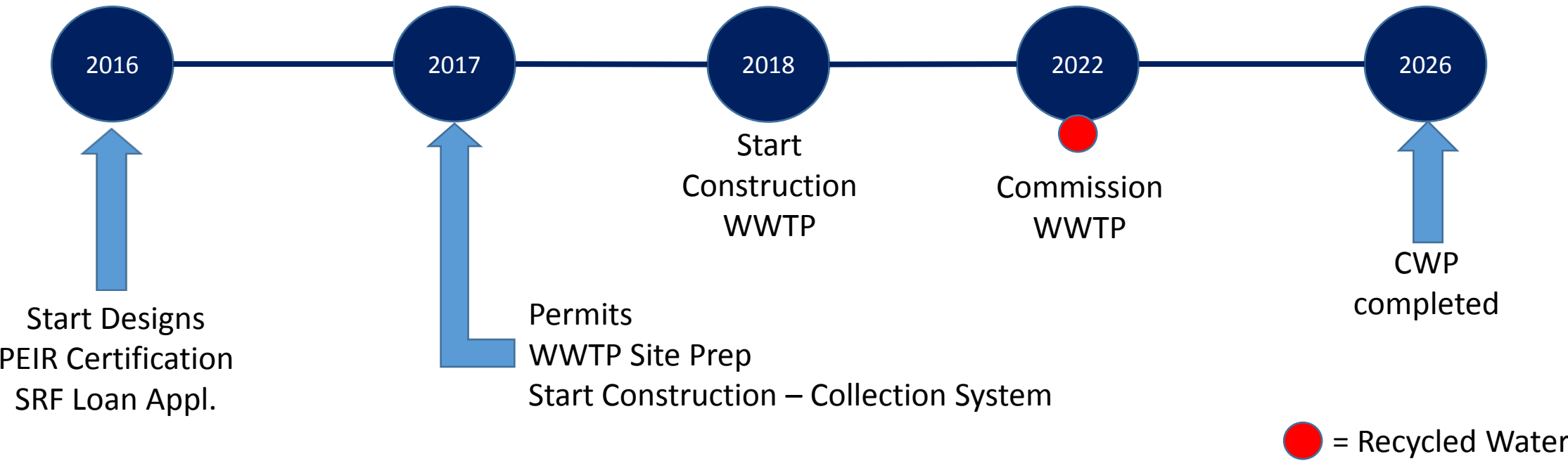


ENVISION™

Infrastructure Sustainability Metrics



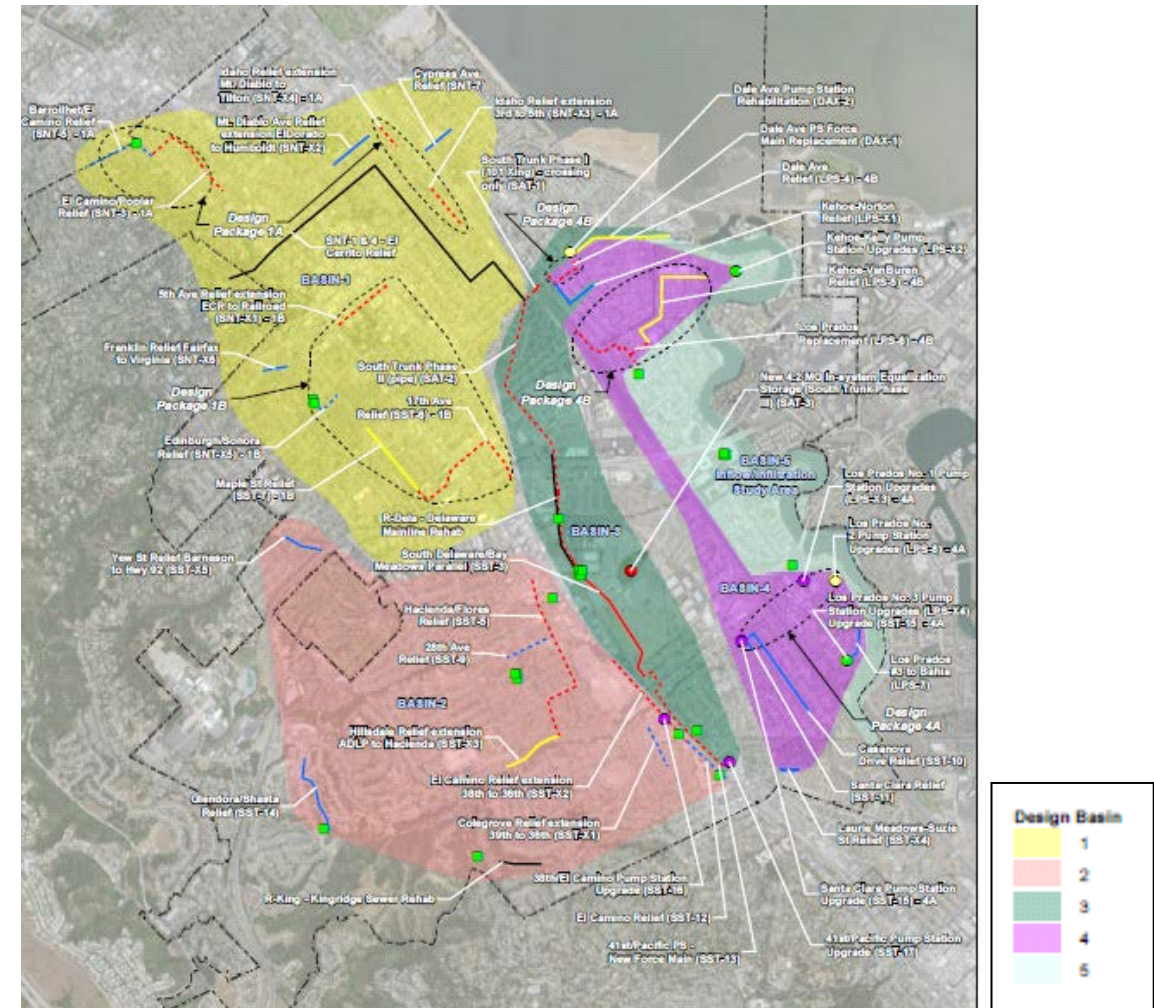
Program Schedule



Program Projects

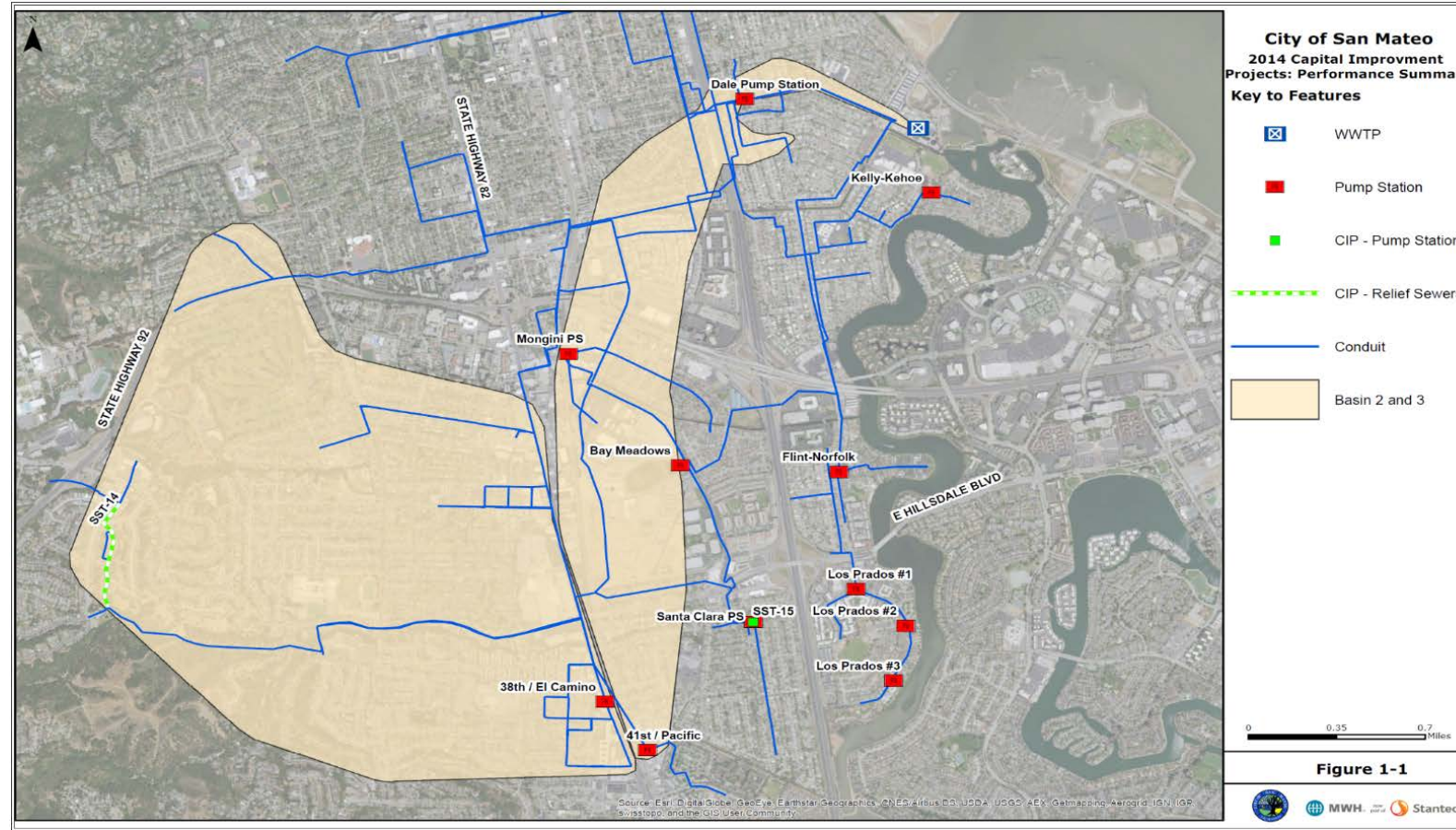


WWTP Facility Improvements & Upgrades

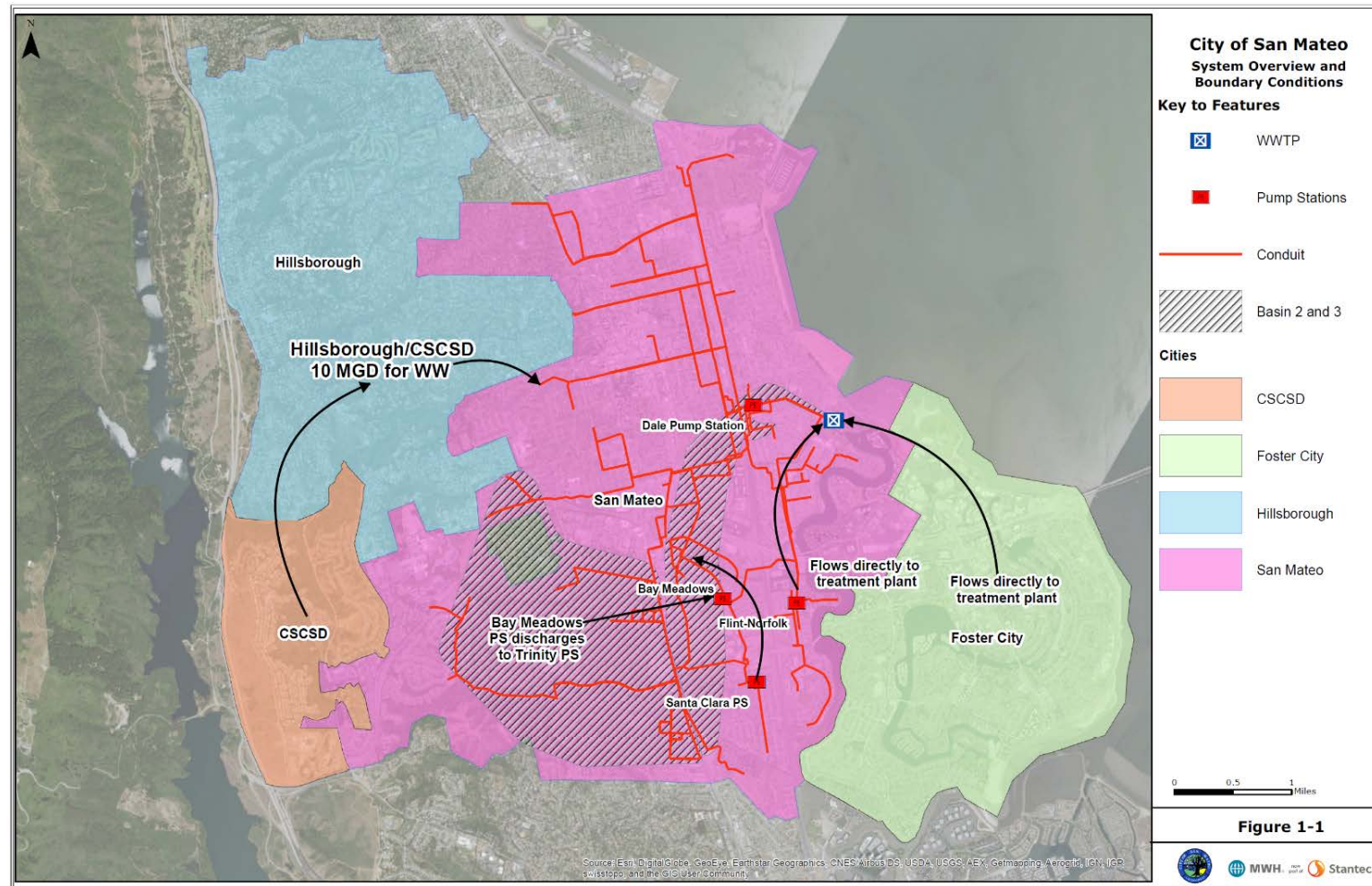


Bundled Collection System Improvements (Basins)

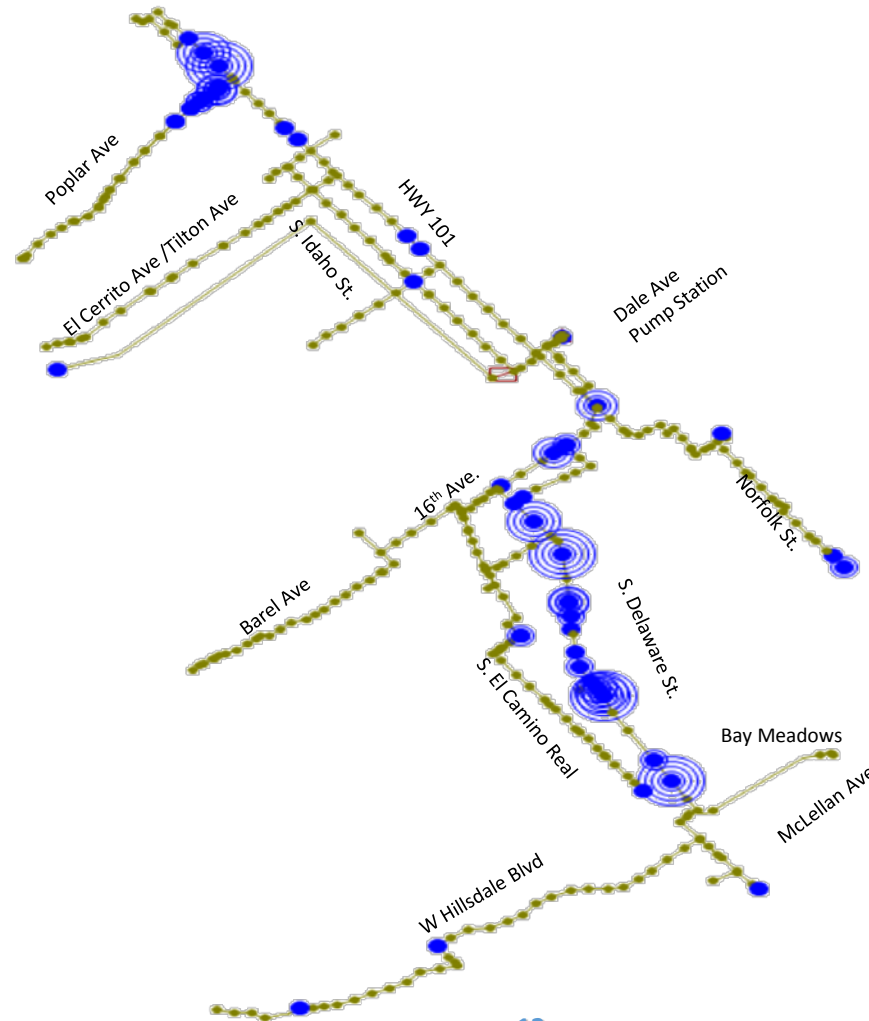
First Big Project: Basins 2 & 3 Collection System Improvements



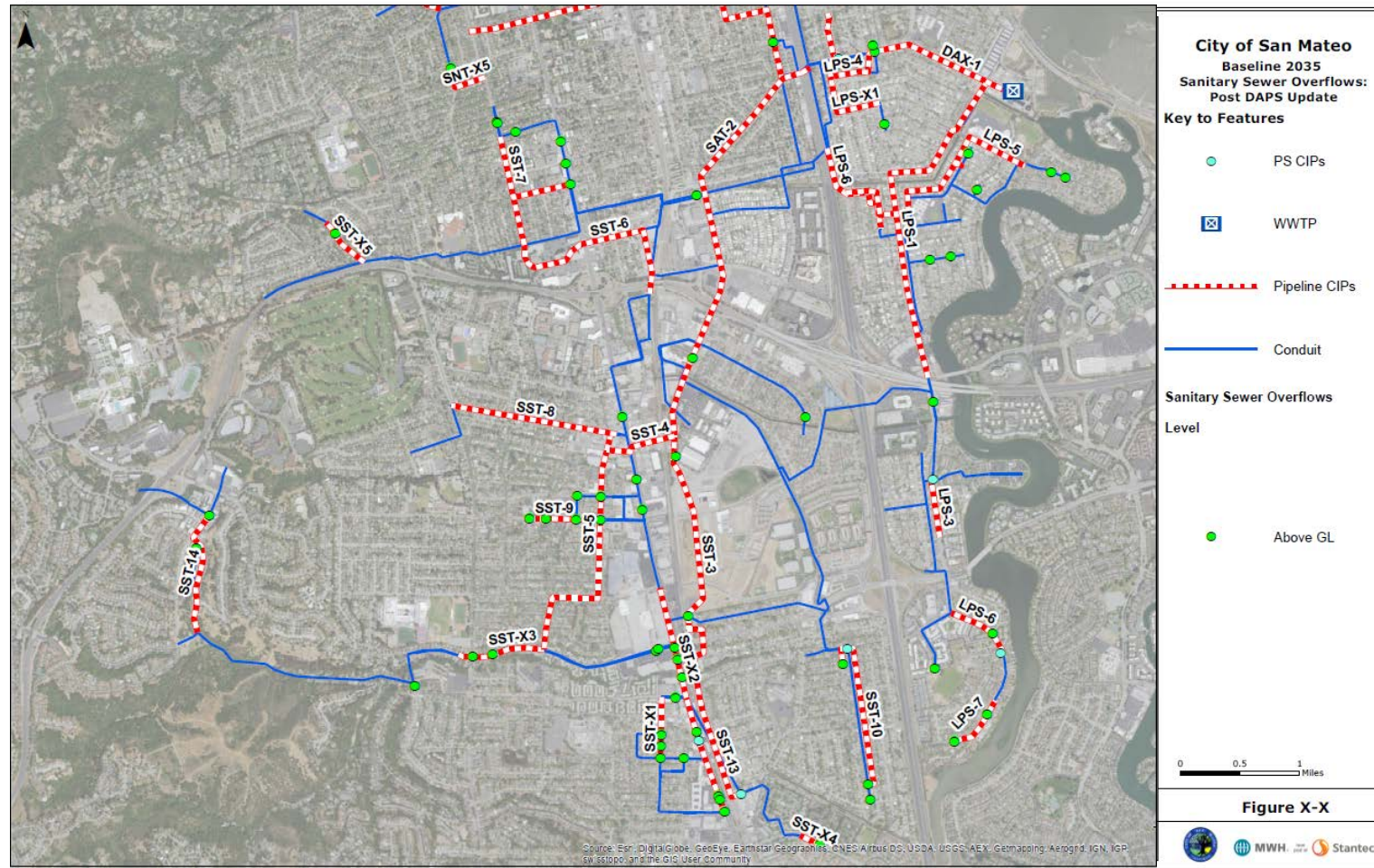
Water Flows Toward the Plant



Overflows Occur at Delaware Corridor



Capital Improvement Projects to Address Overflows



Basin 2 & 3 Collection System Improvements

- **Thirteen (13) Pipelines (Approx. 30,000 feet)**

- 28th Avenue Relief
- 41st/Pacific PS New Force Main
- Colegrove Relief Extension
- Dale Avenue PS Force Main Replacement
- El Camino Relief Extension
- El Camino Relief
- Glendora/Shasta Relief
- Hacienda/Flores Relief
- Hillsdale Relief Extension
- South Delaware/Bay Meadows Parallel
- South Trunk Phase I (101 Xing)
- South Trunk Phase II (Delaware/Sunnybrae relief)
- Yew Street Relief

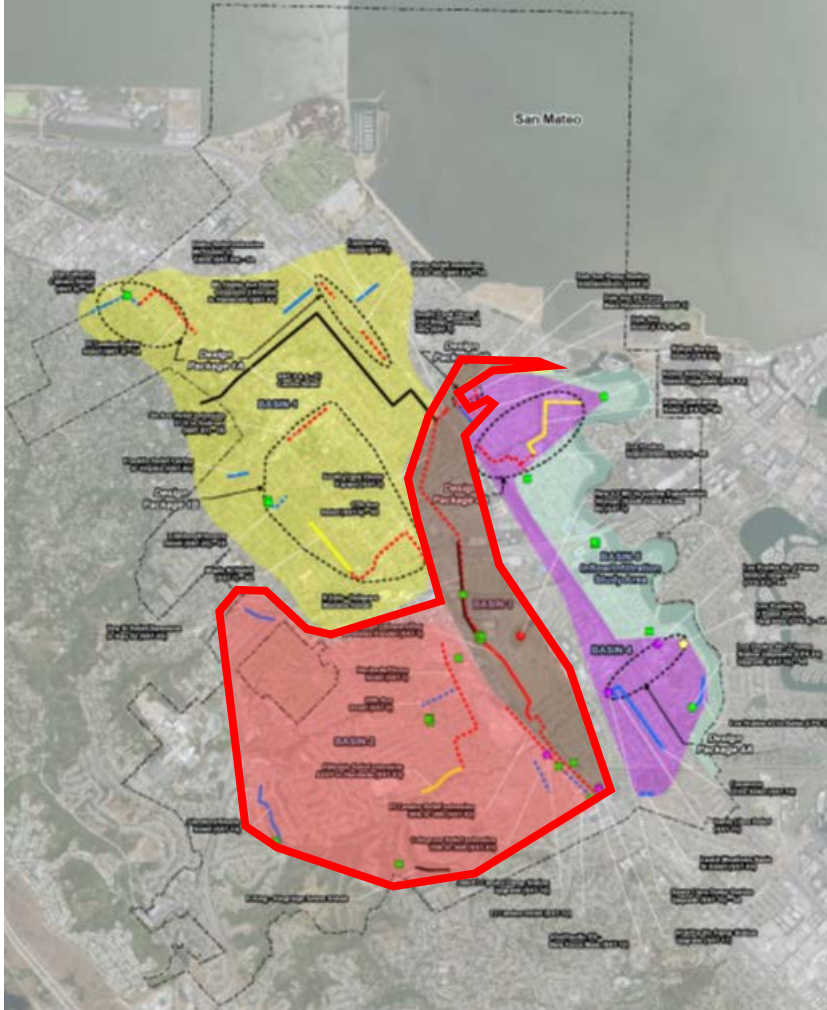
- **Two (2) PS Upgrades**

- 38th/El Camino PS Upgrade
- 41st/Pacific PS Upgrade

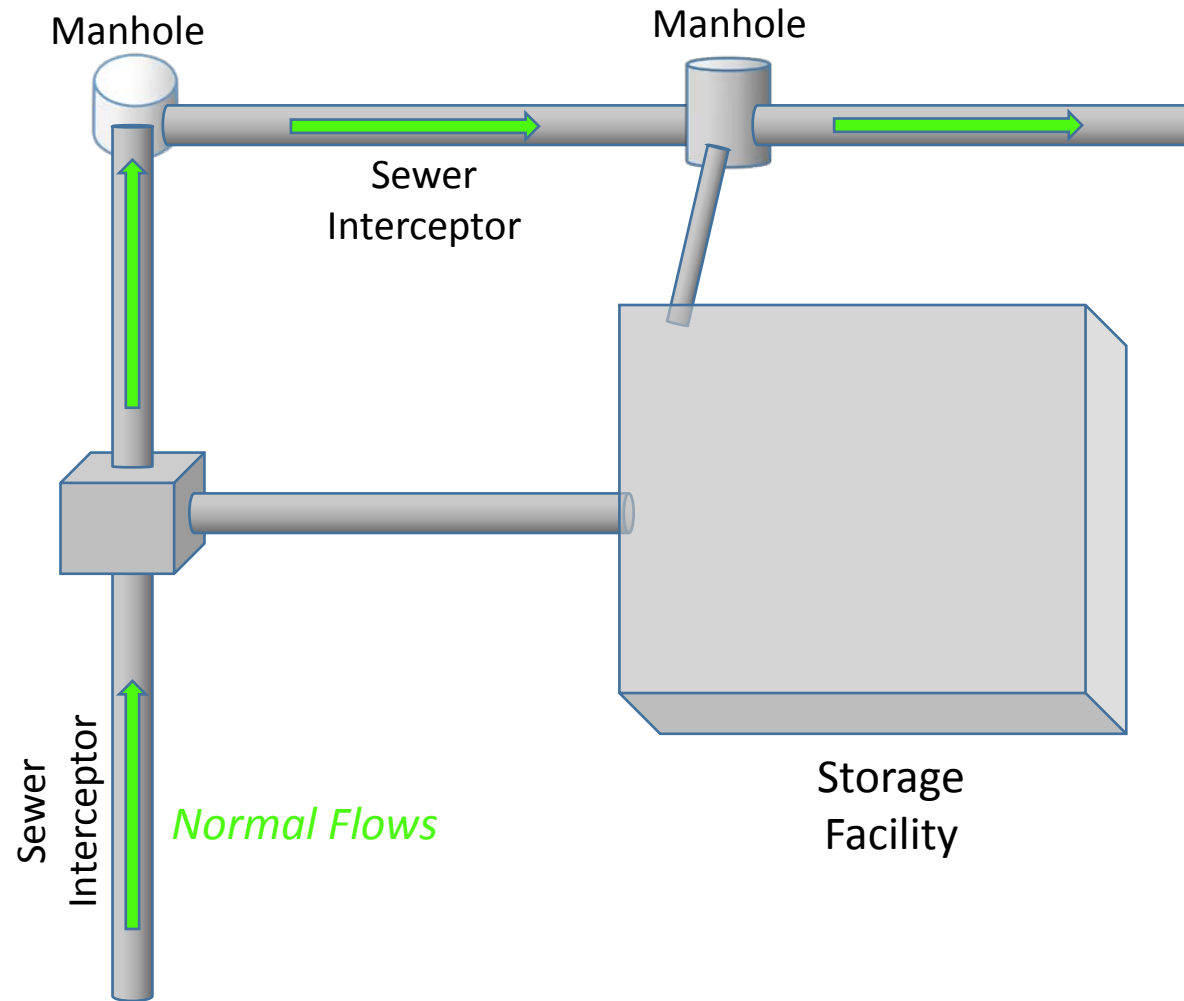
- **One (1) PS Rehabilitation**

- Dale Avenue PS Rehabilitation

- **Underground Storage Facility**



How System Storage Works....



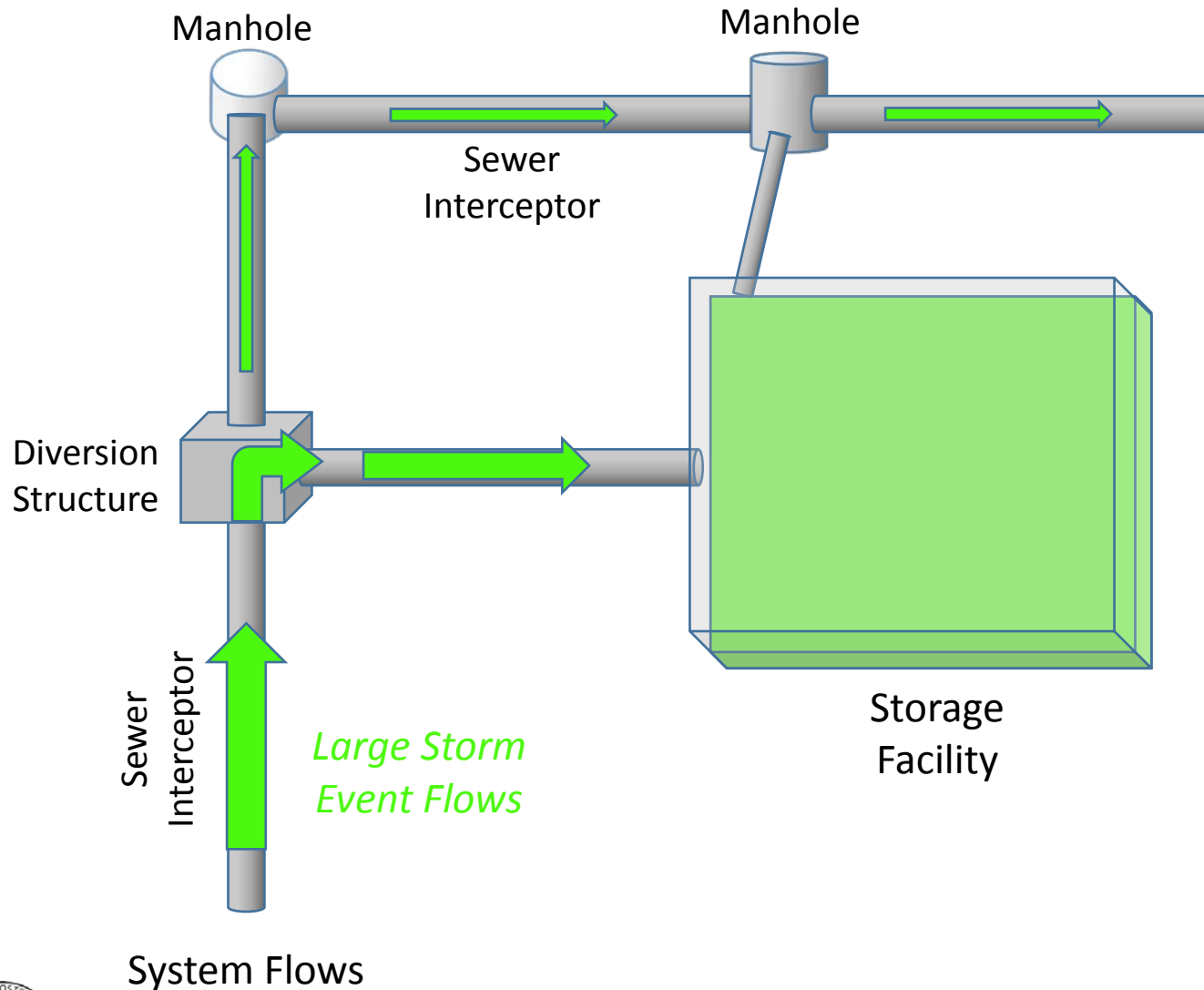
To San Mateo
WWTP

Under normal
conditions,
sewage goes to
the treatment
plant through the
conveyance
system...

From the
collection system



How System Storage Works....

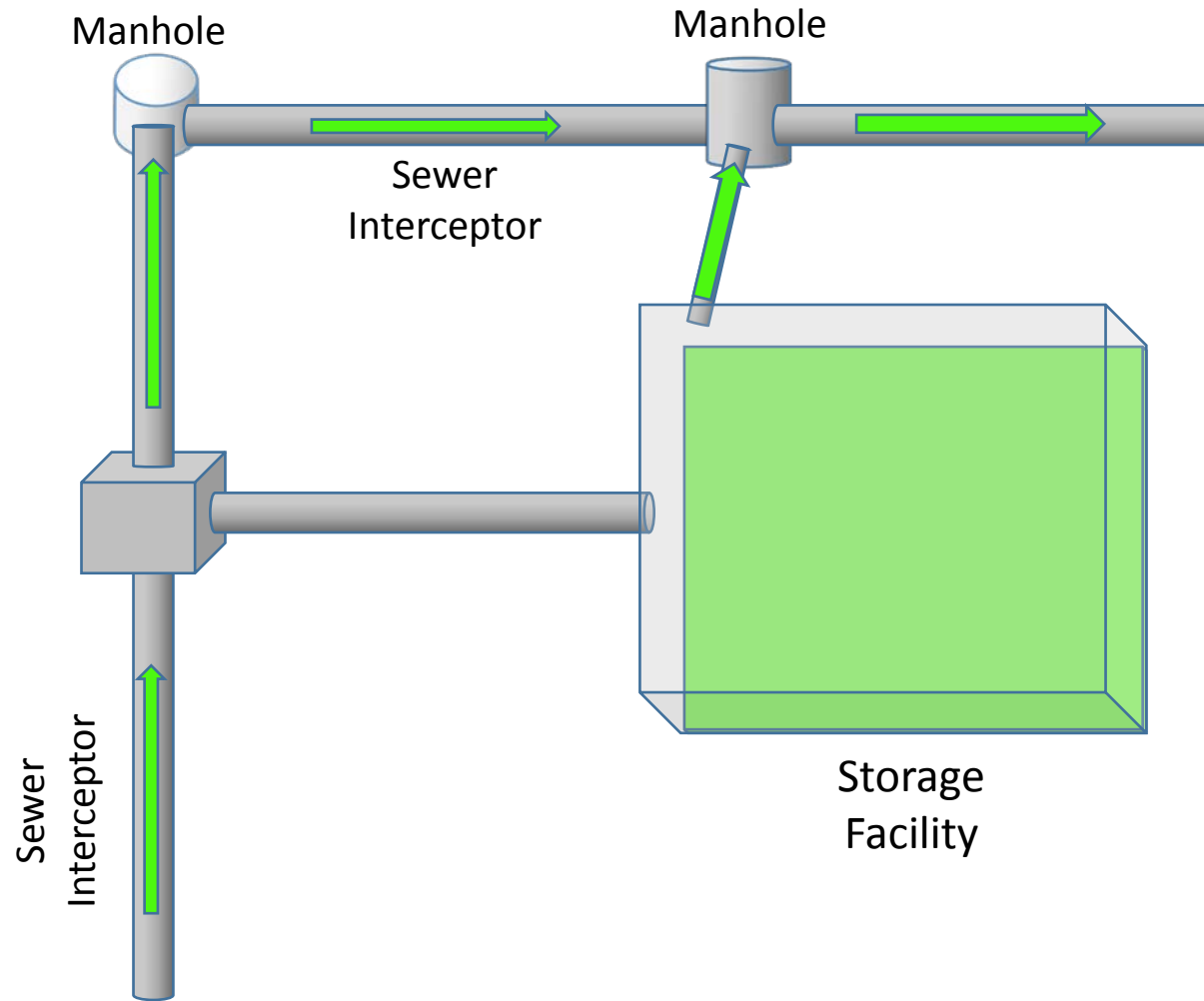


To San Mateo
WWTP

During a storm event, when the system runs out of capacity, excess **sewage** is diverted to a storage facility...

System Flows

How System Storage Works....



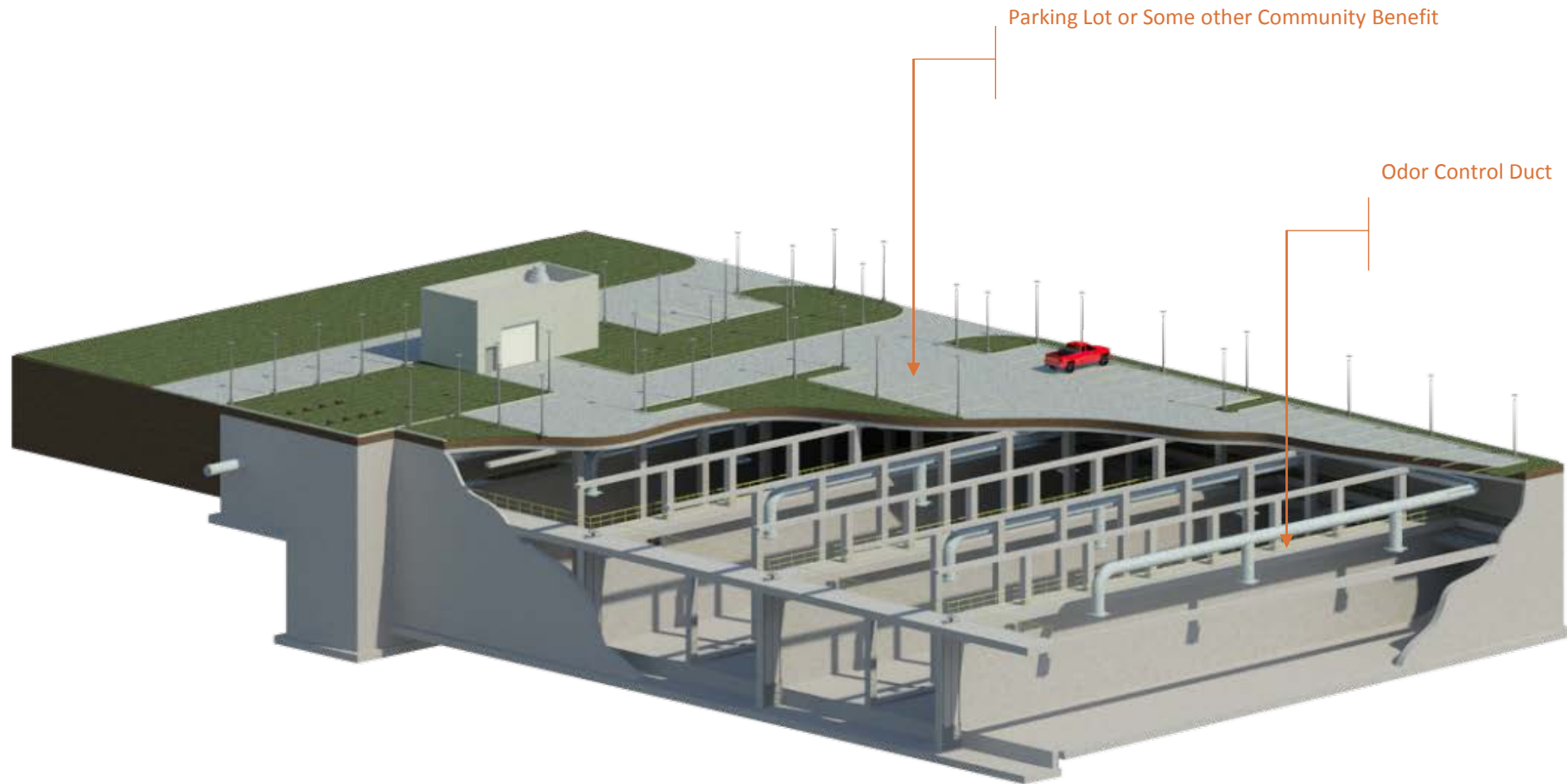
System Flows

To San Mateo
WWTP

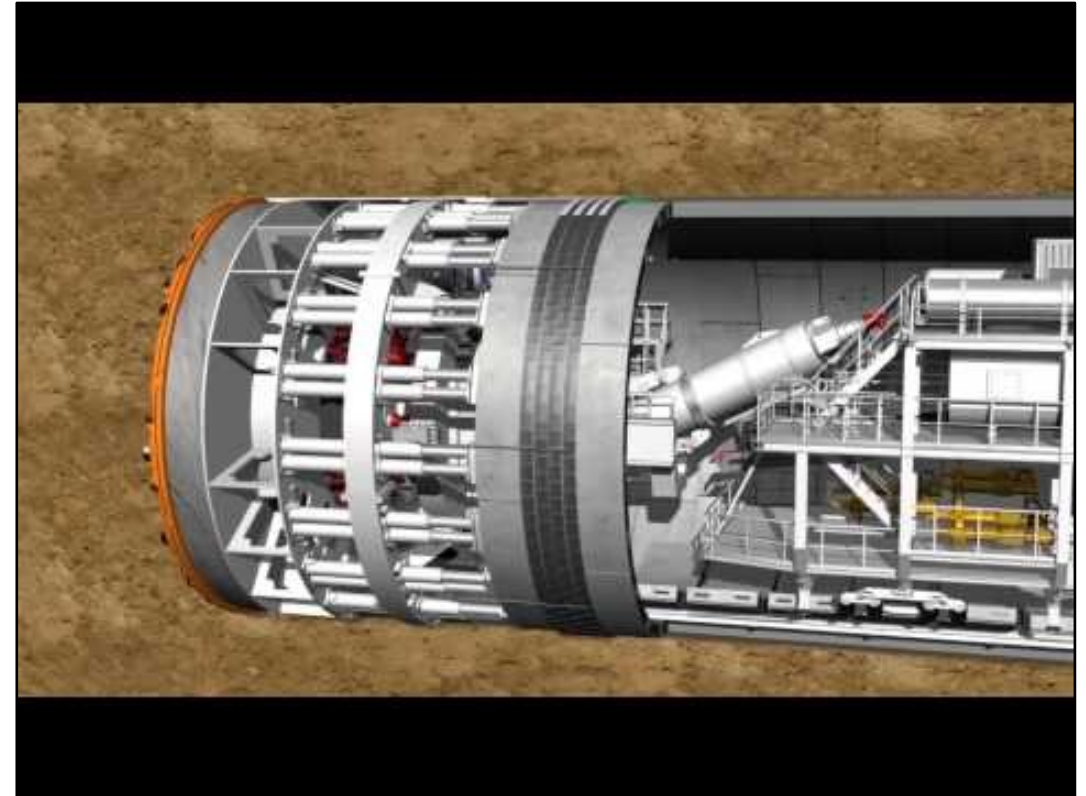
When the system gets its capacity back, stored **sewage** is put back into the system and sent to the treatment plant.

The storage is ready to use again.

What System Storage Looks Like



Tunnel Storage Facility



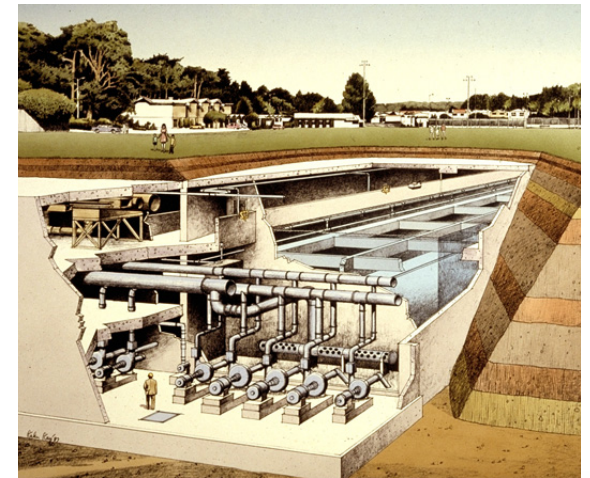
Underground Storage Facilities – Examples & Features



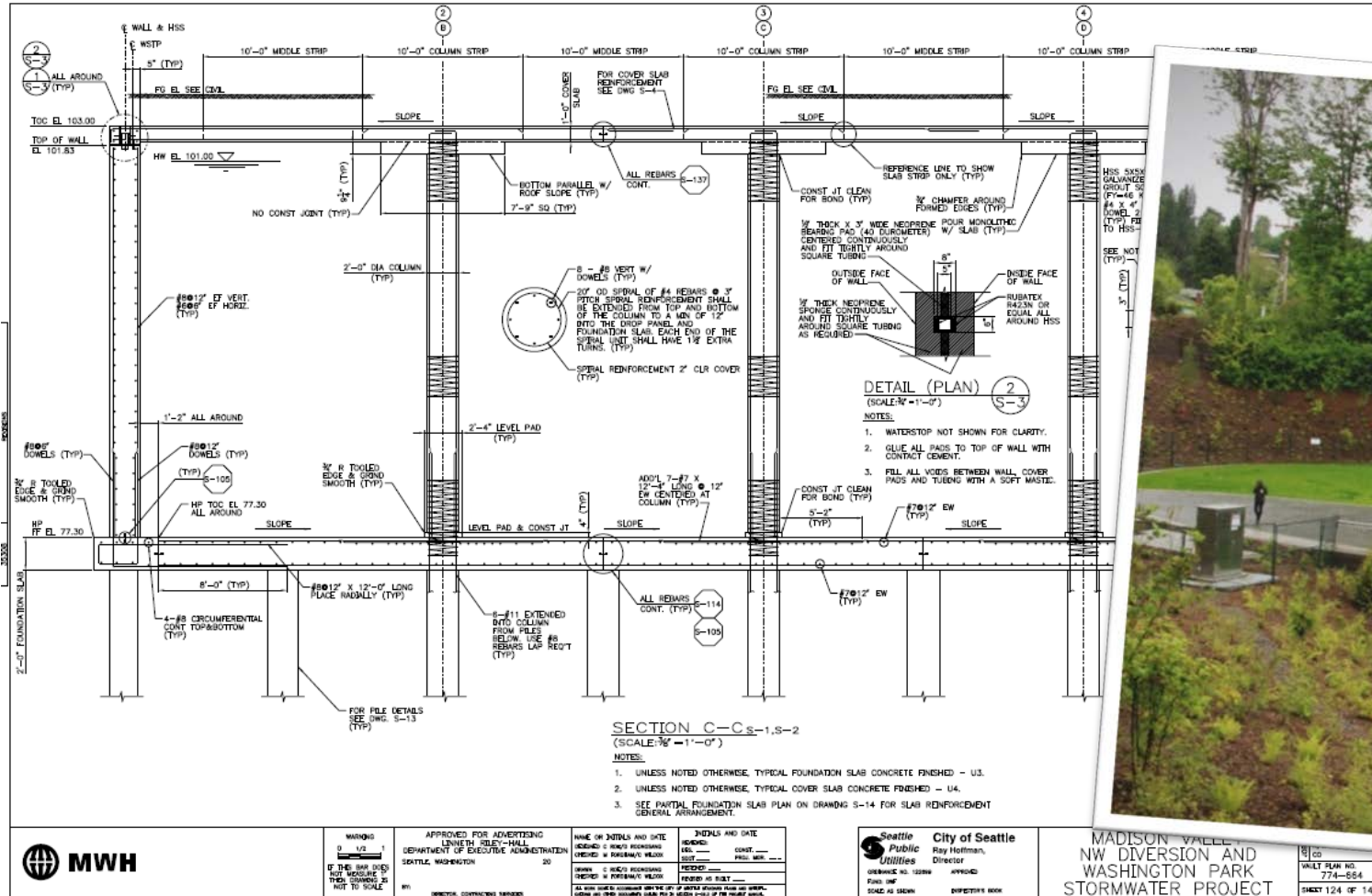
- Underground Storage Facilities can be constructed underneath parks, play fields, parking lots, roads, etc.



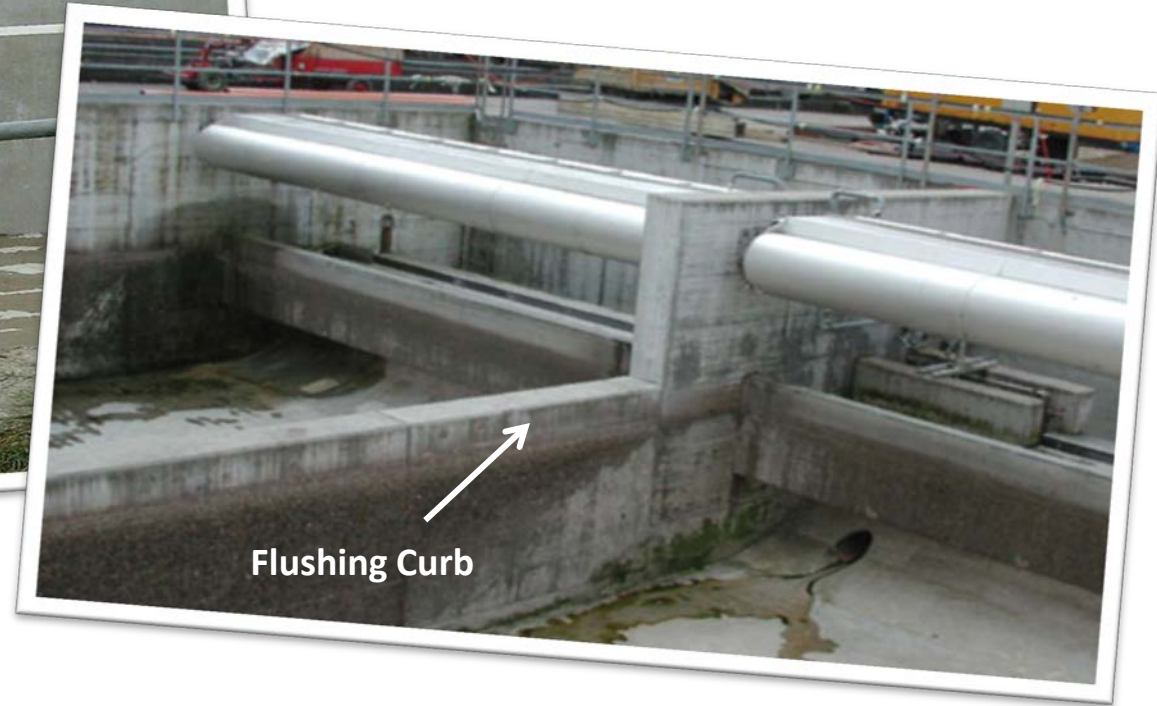
- Odor control provided
- Self-cleaning features aid maintenance



Underground Storage Facilities – Examples & Features

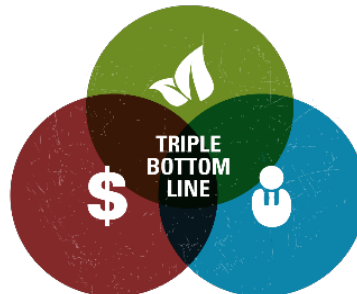


Odor Control, Self-Cleaning, & Maintenance



Storage Site Evaluation Criteria

Number of Alternatives	55	5	5	2	1
	PEIR	Project Design Team	Community & Commissions	Community & Commissions	Council
Criteria	<u>Space</u> <ul style="list-style-type: none"> • Municipal property • Schools • Undeveloped property • Private property • No existing residential, state, or federal property included • Proximity • Storage Capacity 	<u>Technical</u> <ul style="list-style-type: none"> • Hydraulics • Constructability • Right-of-Way • Contractor Laydown • Parking • Storage Capacity • Soil & Groundwater 	Community Input	Community Input and CWP Final Evaluation	City Council Selection





Tunnel Storage

Fiesta Meadows
Park

Expo Center
Parking Lot

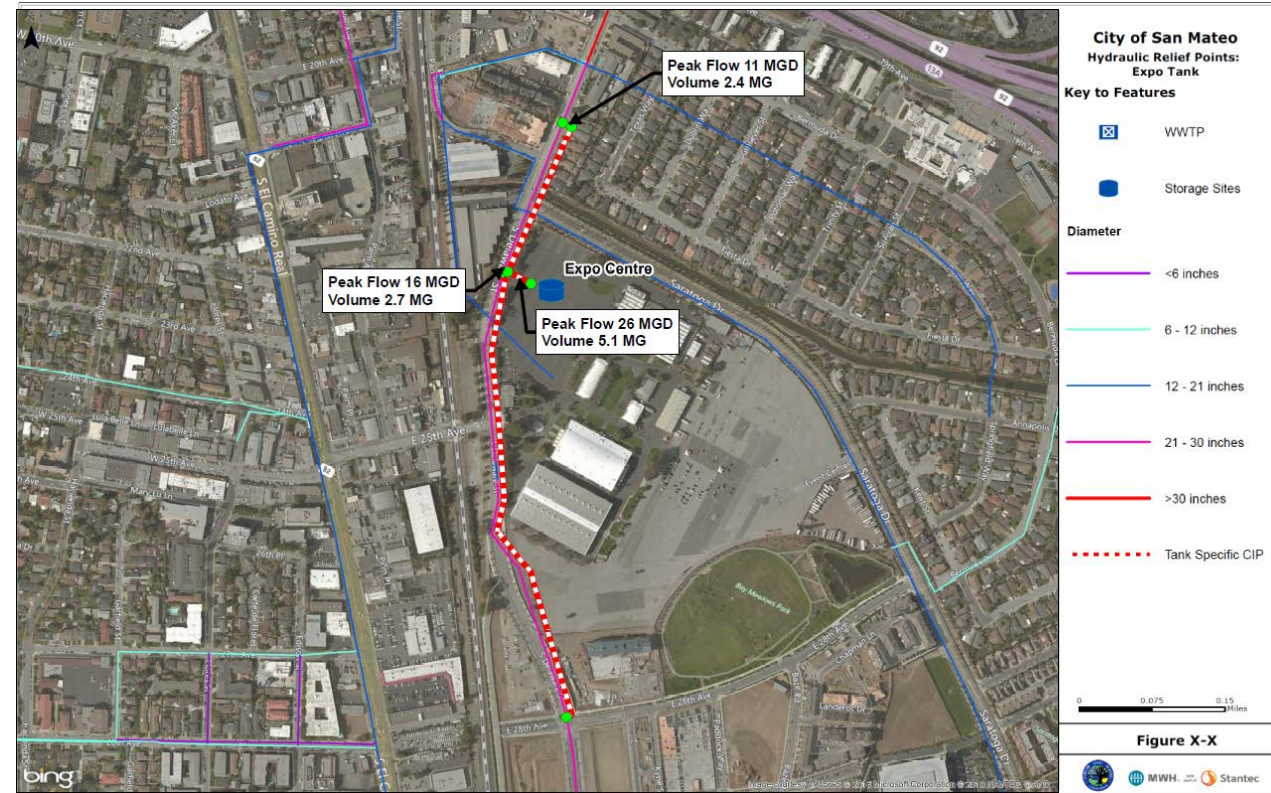
Hillsdale Plaza

Bay Meadows Park

Alternative Sites

San Mateo Event Center (Expo)

- 39" relief sewer installed from E 28th Street to Expo Center (2,200 feet)
- 36" relief sewer installed from north of Pacific Boulevard to Expo Center (800 feet)



Fiesta Meadows

- 36" relief sewer installed along E 28th Ave from Delaware to Fiesta Meadows site (3,200 feet)
- 30" relief sewer installed from Delaware Street to Fiesta Meadows site (2,900 feet)



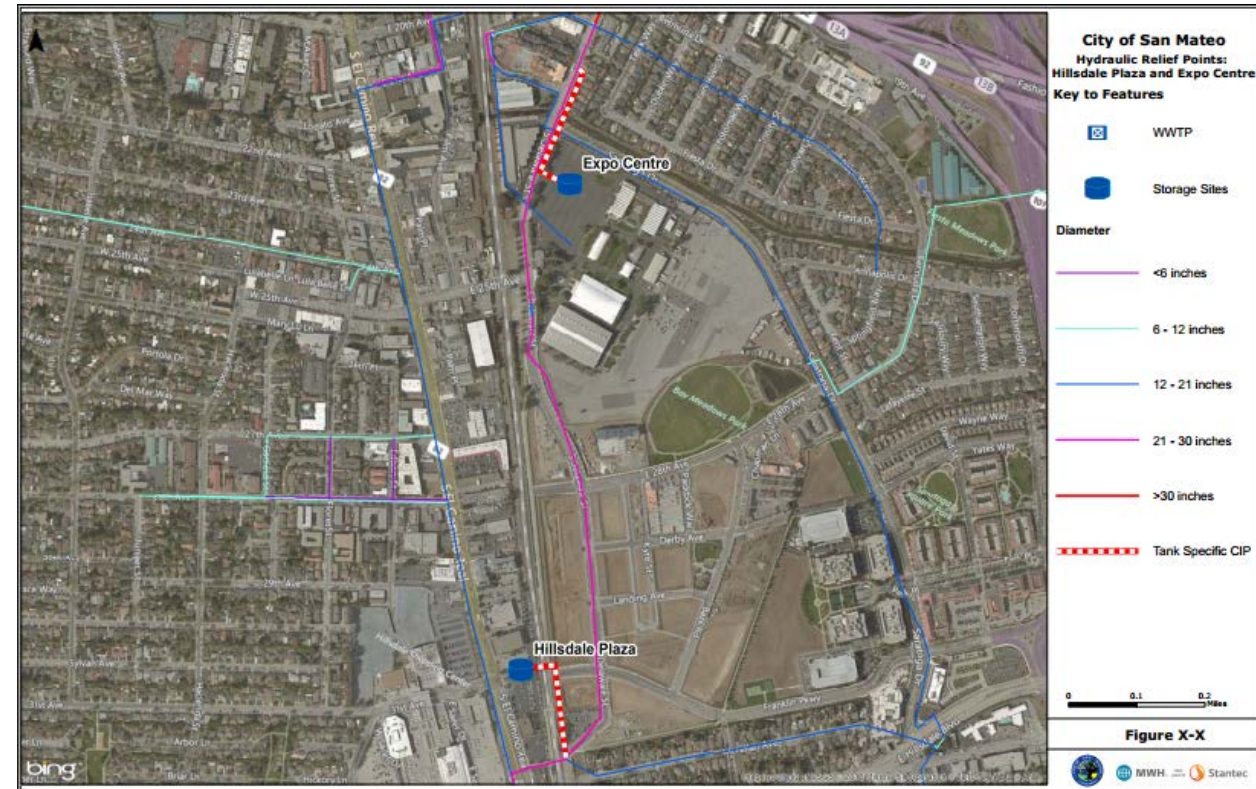
Bay Meadows

- 30" relief sewer installed from north of Pacific Boulevard to E 28th Avenue (2,500 feet)
- 36" relief sewer installed from along E 28th Ave from Delaware to Bay Meadows site (1,200 feet)



Hillsdale Plaza & Expo Center

- 30" relief sewer installed from S Delaware to Expo Site (1,000 feet)
- 30" relief sewer installed from ft from S Delaware to Pacific (1,000 feet)
- 5 (est.) mgd pump stations at each tank
- Required Volume (2 Tanks)
 - Location A – 2.6 MG Expo
 - Location B – 2.5 MG Hillsdale

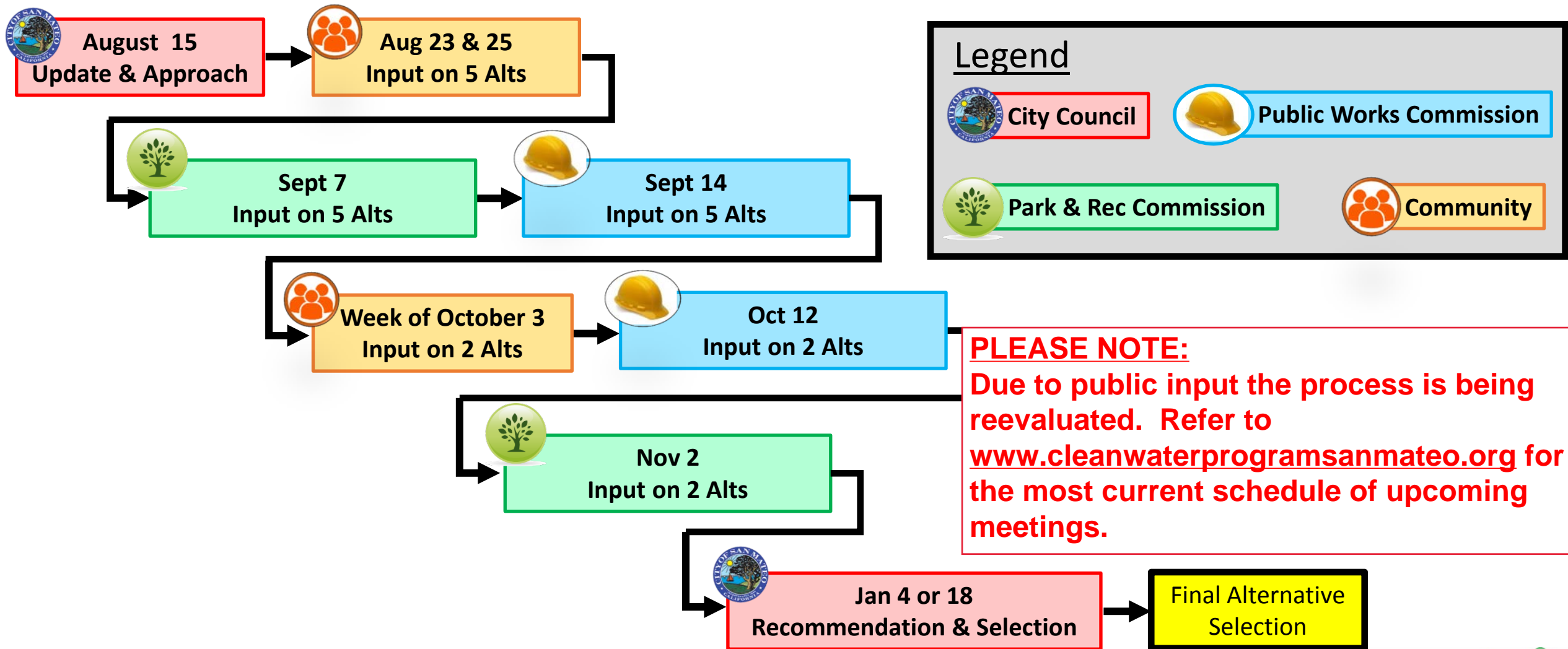


Tunnel Storage Facility

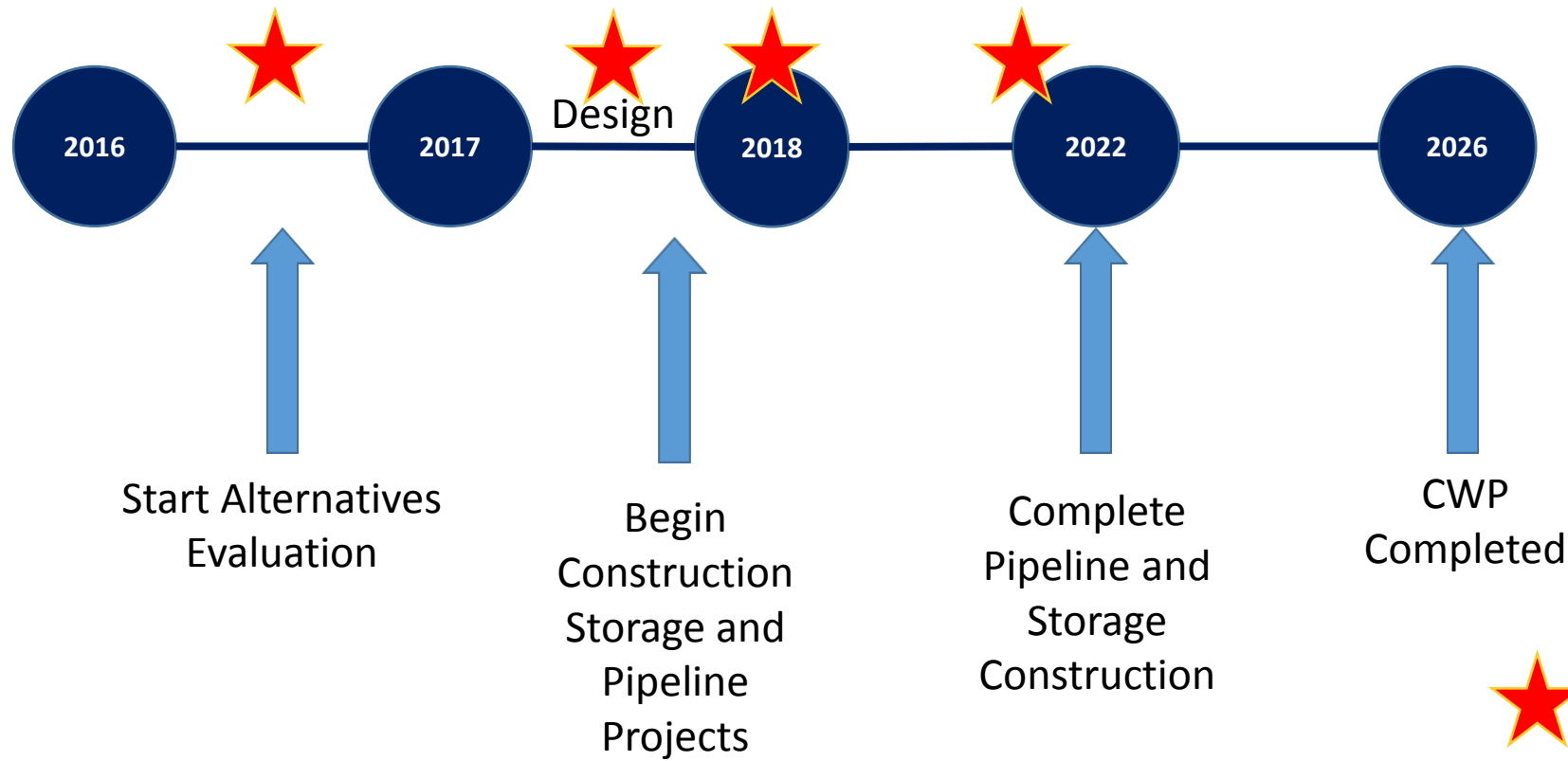
- 12' diameter tunnel
- 50 feet deep
- 6,300 feet length



Outreach Schedule



Basin 2 & 3 Schedule



Stay Informed

Visit the Clean Water Program Website

www.cleanwaterprogramsanmateo.org

Contact Us

info@cleanwaterprogramsanmateo.org

650-727-6870



Public Comment

We want to hear from you!

- What are your questions/concerns about the five alternatives that we've presented?





CLEANWATERPROGRAM

PROTECTING THE BAY FOR A SUSTAINABLE FUTURE



www.cleanwaterprogramsanmateo.org