



# Community Meeting: In-System Storage Evaluation

Thursday, August 25, 2016



# Presentation Overview

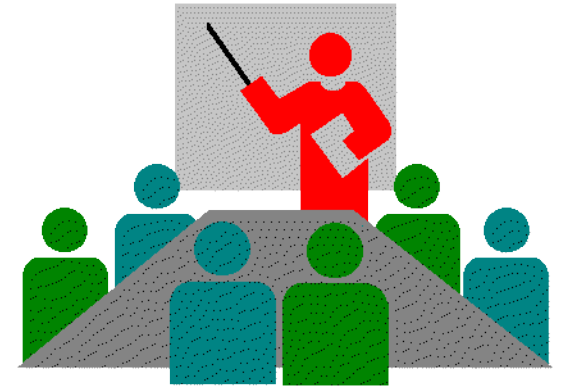
- Welcome & Introductions
- Meeting Guidelines
- Program Background/Integrated Solutions
- Why In-System Storage (Basins 2 & 3)?
- Selection Process: Alternatives Analysis
- Public Comments
- Open House



# Meeting Guidelines

Please ...

- Hold questions & comments until the end of the presentation
- Wait until called upon to speak
- Only one speaker at a time
- Provide constructive comments
- Stay on topic
- Turn off or mute all mobile devices



# Purposes of Tonight's Meeting

- Provide program overview
- Describe project and site alternatives
- **Obtain community feedback** on alternatives





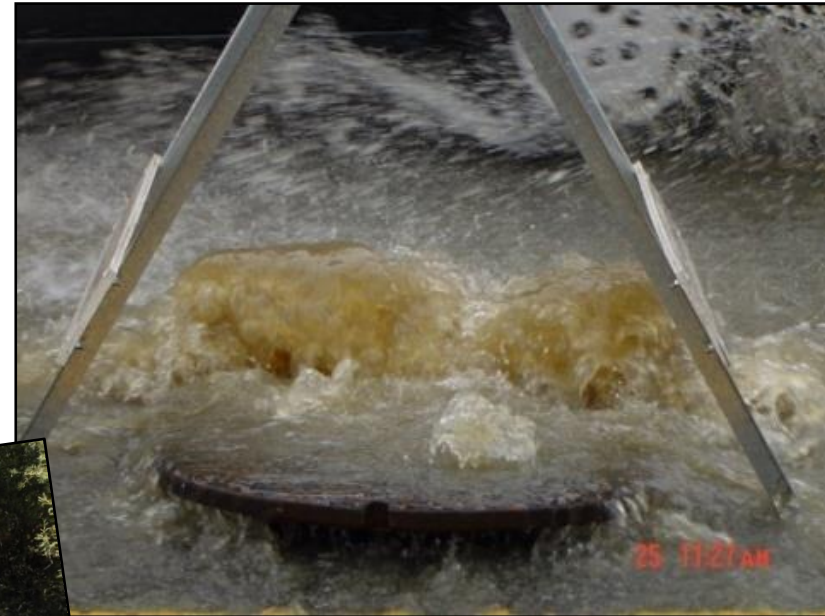
# Wastewater Management System





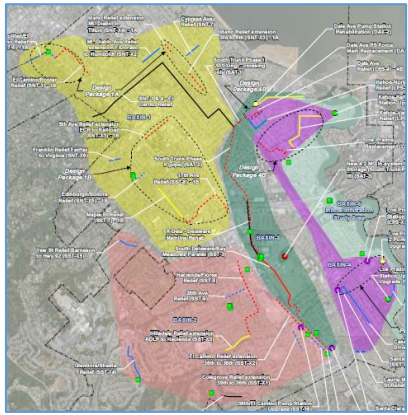


# Insufficient Capacity – Sewer Overflows



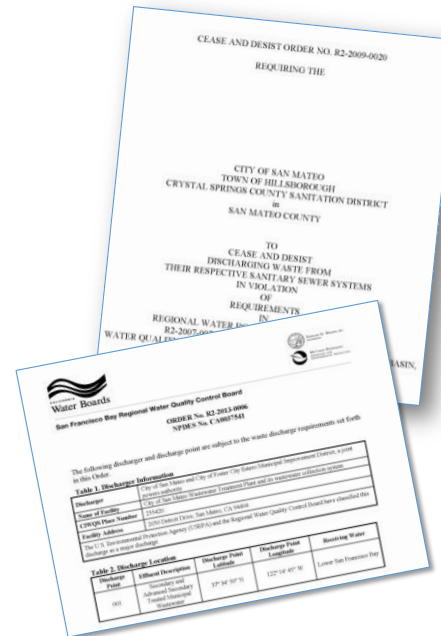
# Program Drivers & Objectives

Replace Aging Infrastructure



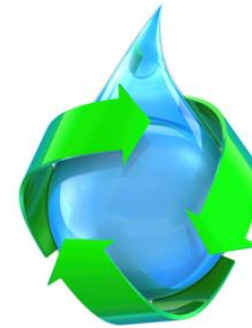
Collection System

Provide Higher Levels of Treatment & Capacity Assurance



RWQCB Cease & Desist Order  
NPDES Permit

Address Sustainability, Climate Change, & Biosolids/Energy



Water Re-Use Partnerships

WWTP



Institute for Sustainable Infrastructure

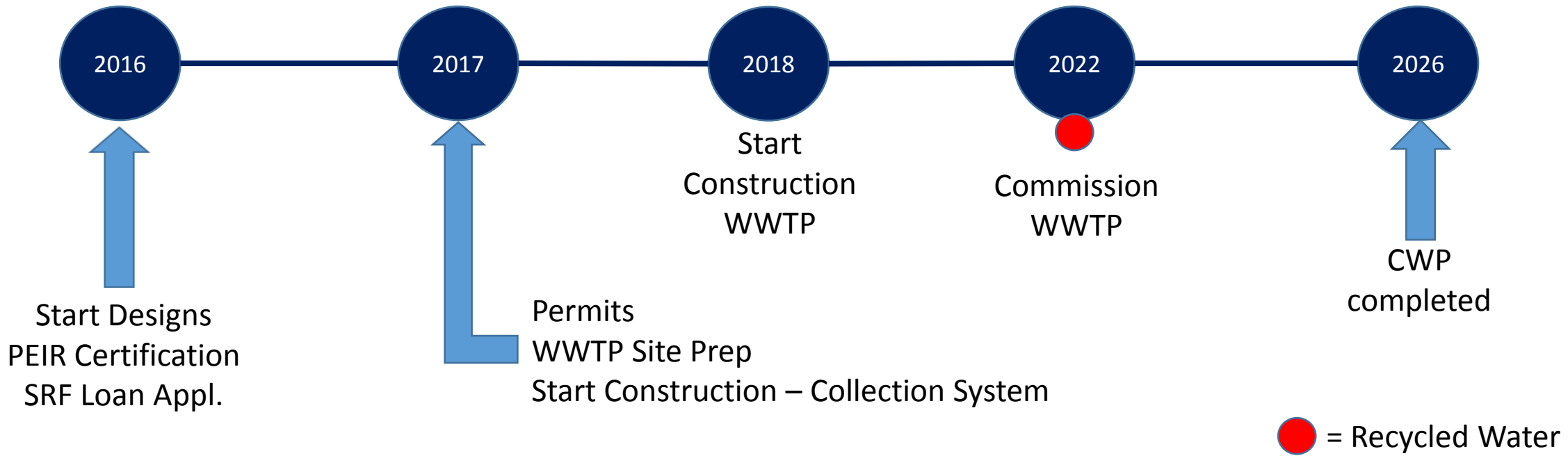


ENVISION™

Infrastructure Sustainability Metrics



# Program Schedule

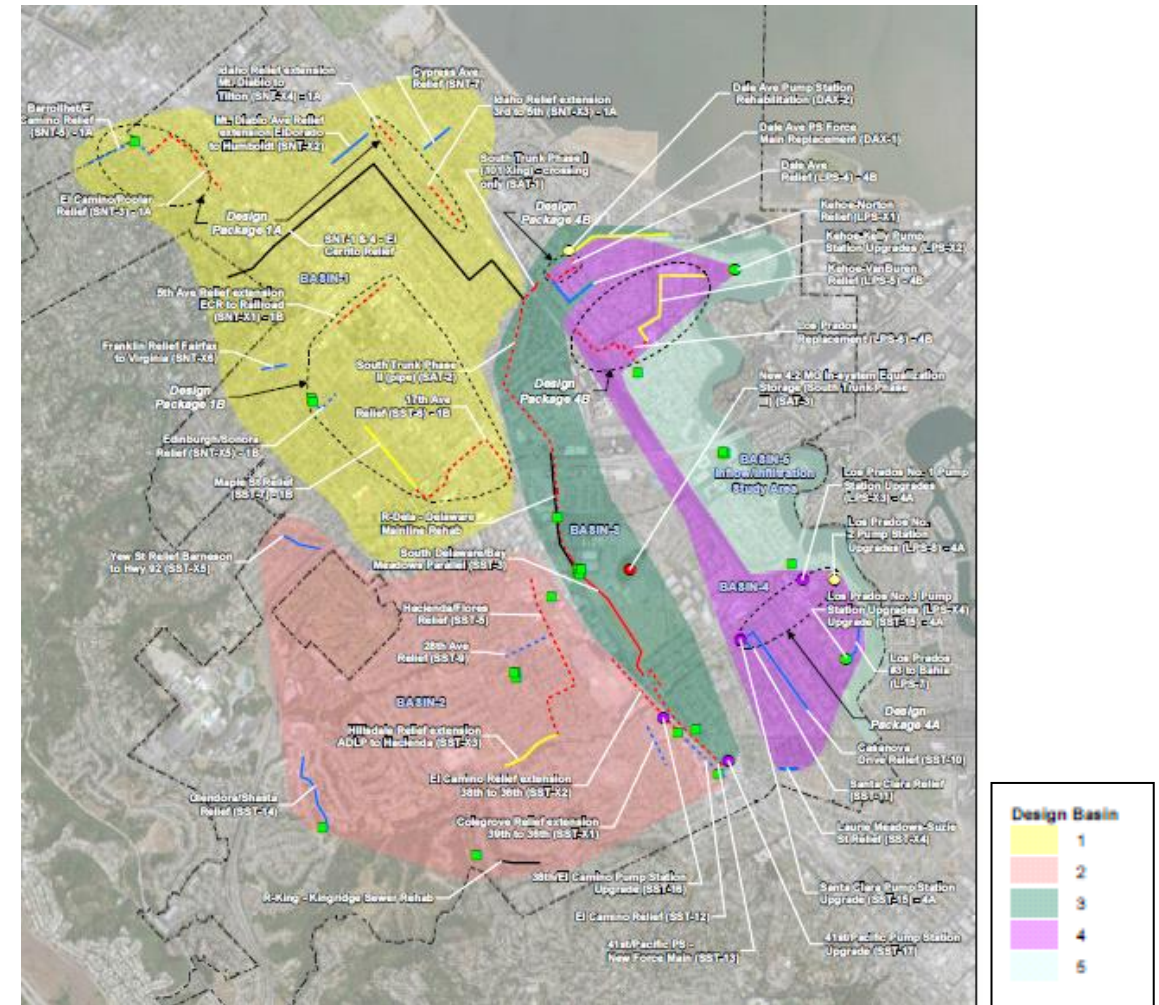




# Program Projects



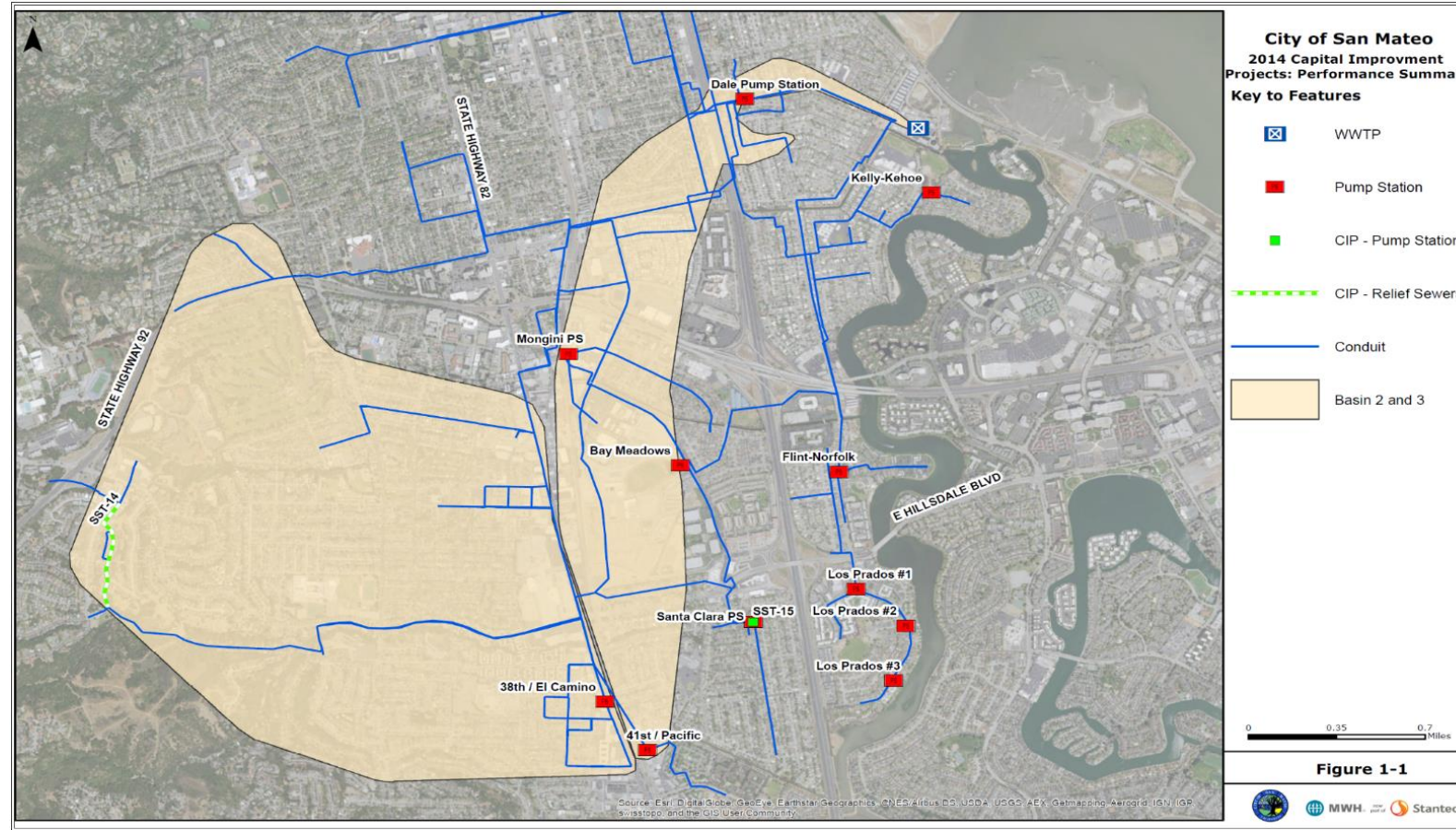
WWTP Facility Improvements & Upgrades



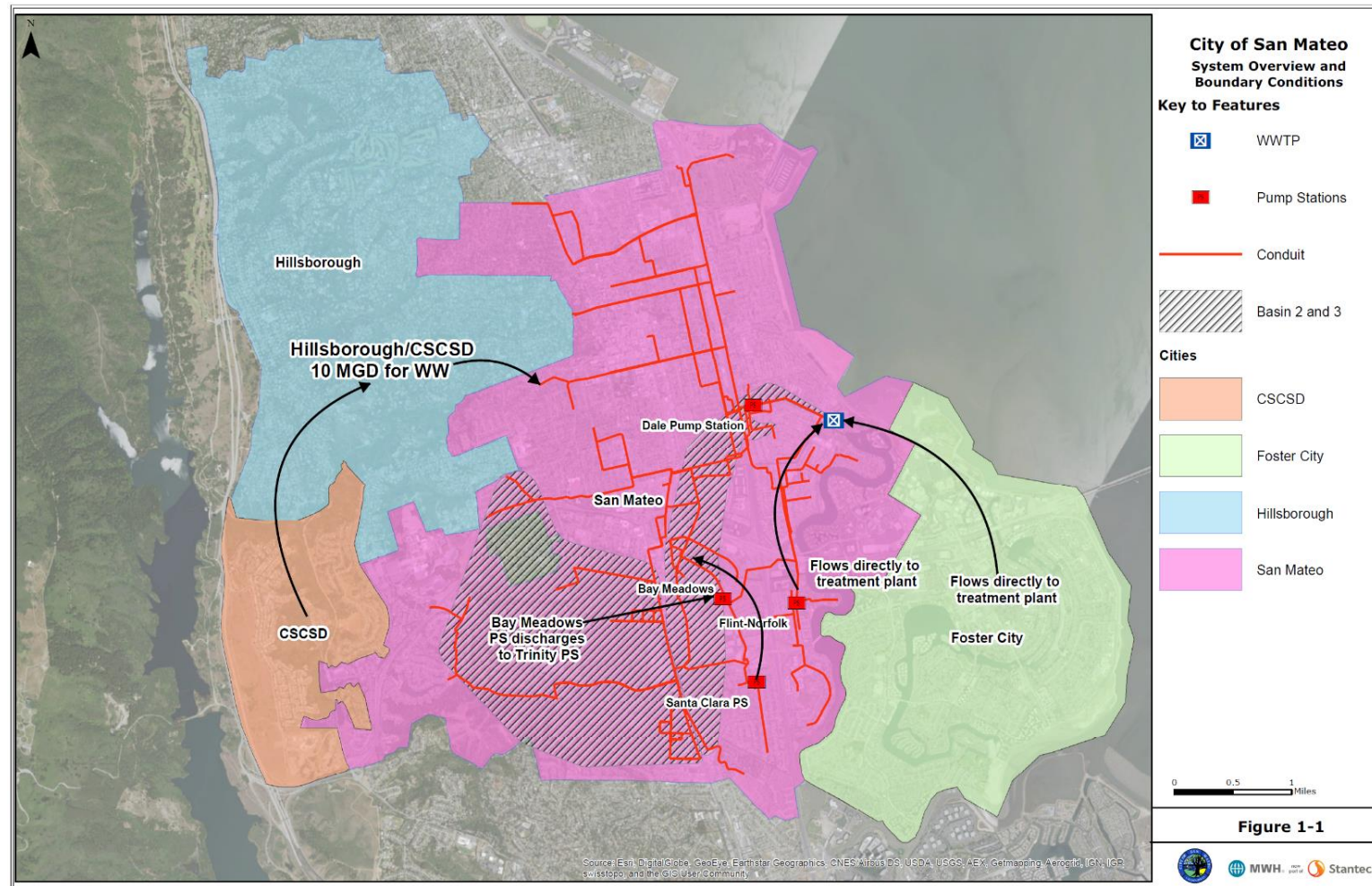
Bundled Collection System Improvements  
(Basins)



# First Big Project: Basins 2 & 3 Collection System Improvements

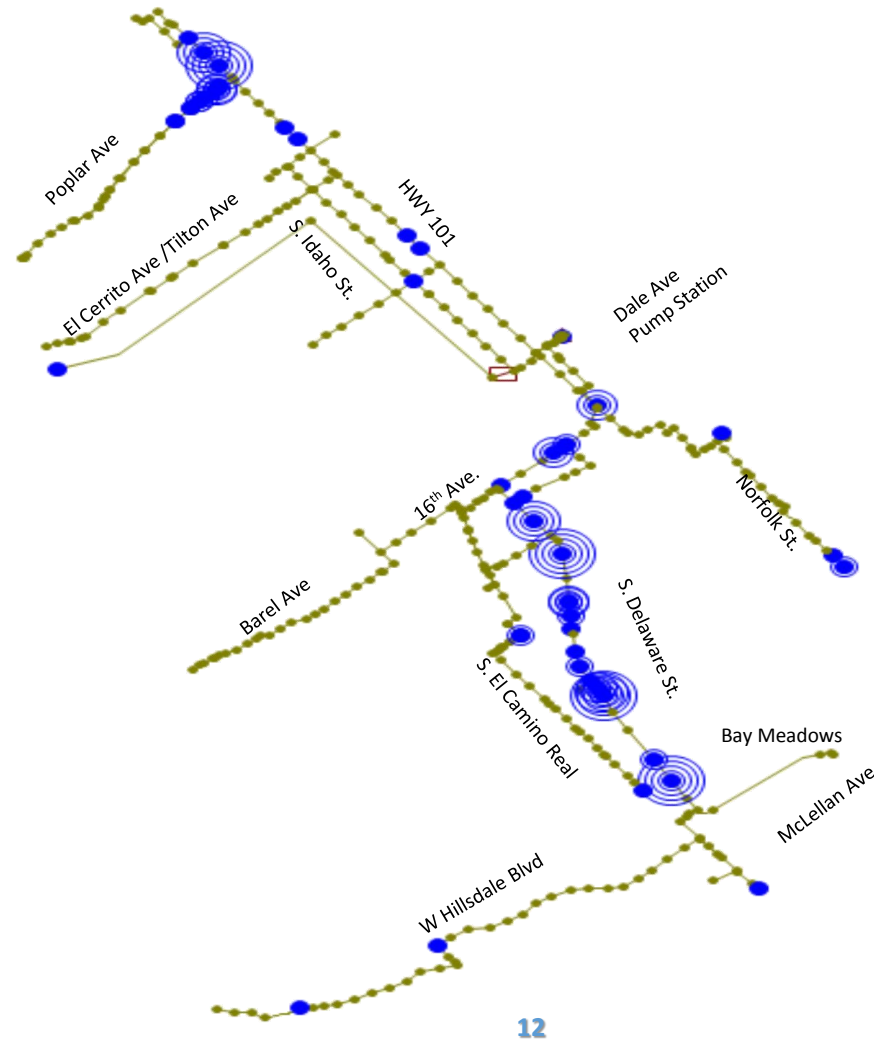


# Water Flows Toward the Plant

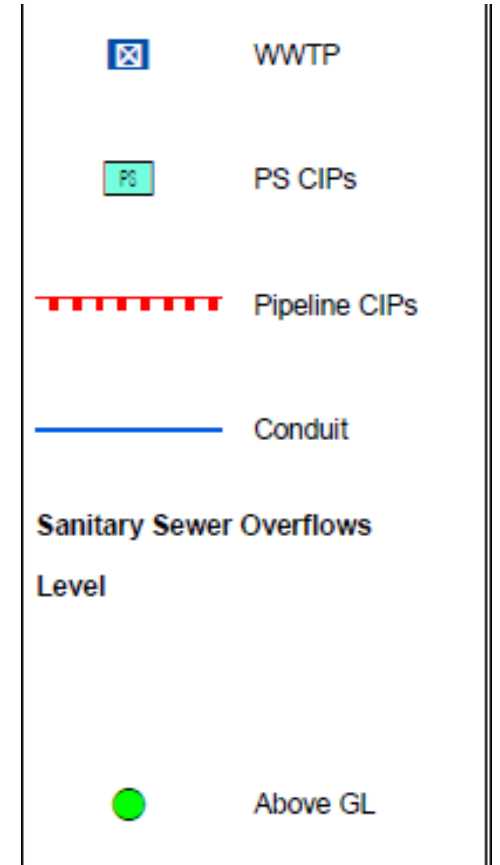
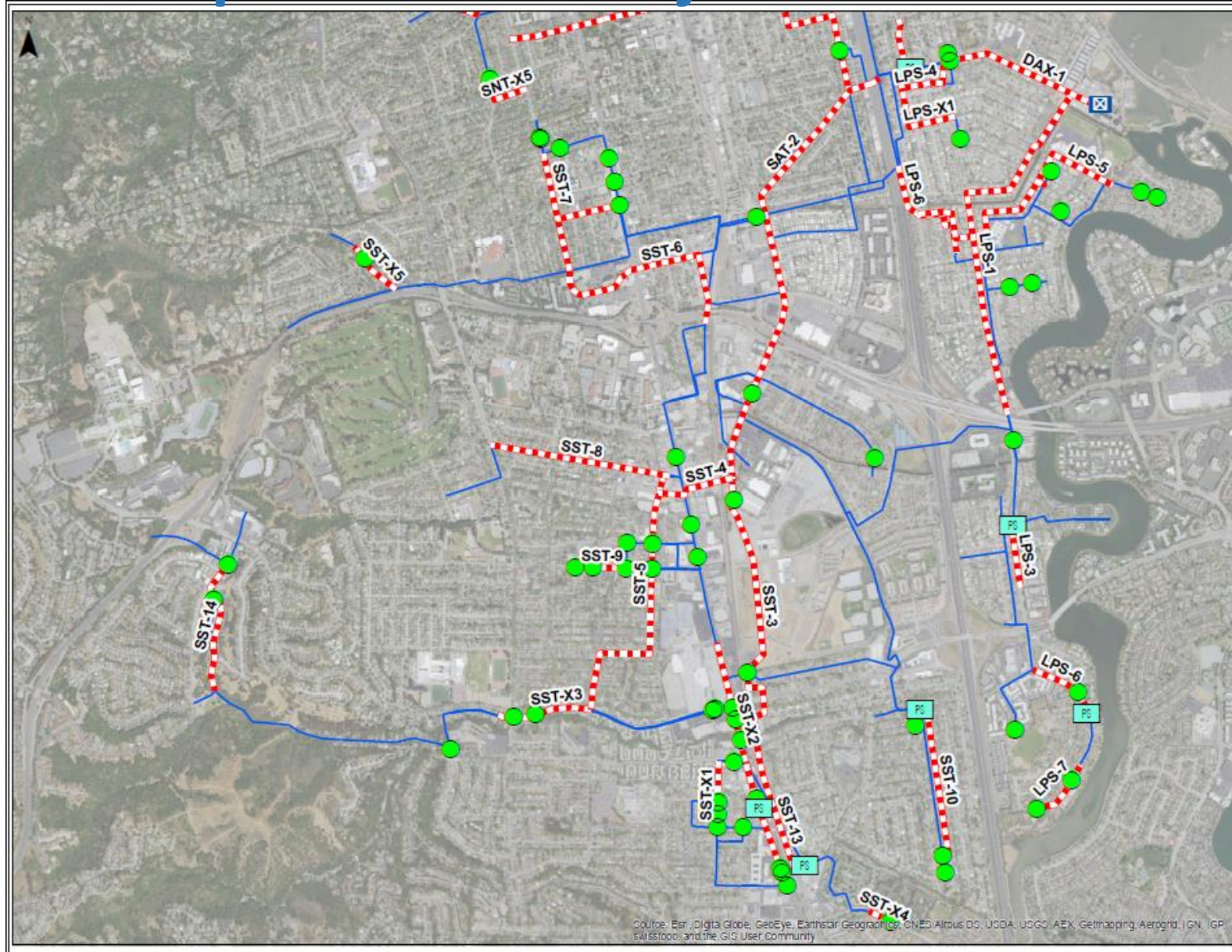




# Overflows Occur at Delaware Corridor

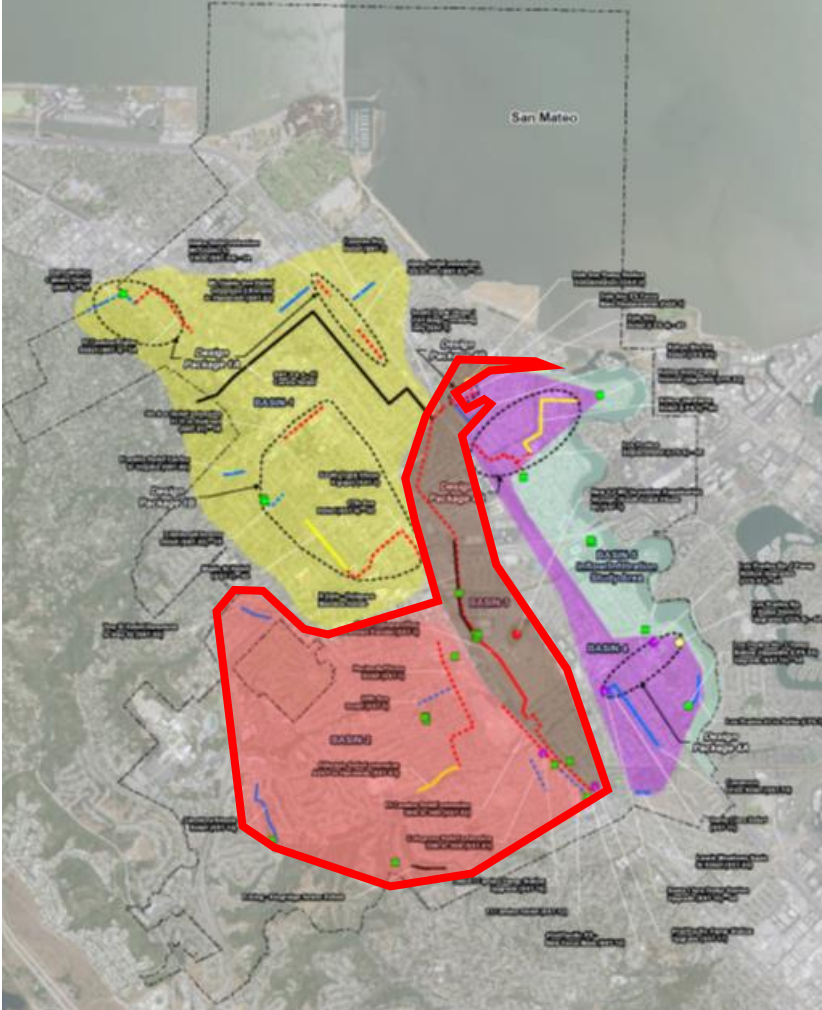


# Capital Improvement Projects to Address Overflows





# Basin 2 & 3 Collection System Improvements



- **Thirteen (13) Pipelines (Approx. 30,000 feet)**

- 28th Avenue Relief
- 41st/Pacific PS New Force Main
- Colegrove Relief Extension
- Dale Avenue PS Force Main Replacement
- El Camino Relief Extension
- El Camino Relief
- Glendora/Shasta Relief
- Hacienda/Flores Relief
- Hillsdale Relief Extension
- South Delaware/Bay Meadows Parallel
- South Trunk Phase I (101 Xing)
- South Trunk Phase II (Delaware/Sunnybrae relief)
- Yew Street Relief

- **Two (2) PS Upgrades**

- 38th/El Camino PS Upgrade
- 41st/Pacific PS Upgrade

- **One (1) PS Rehabilitation**

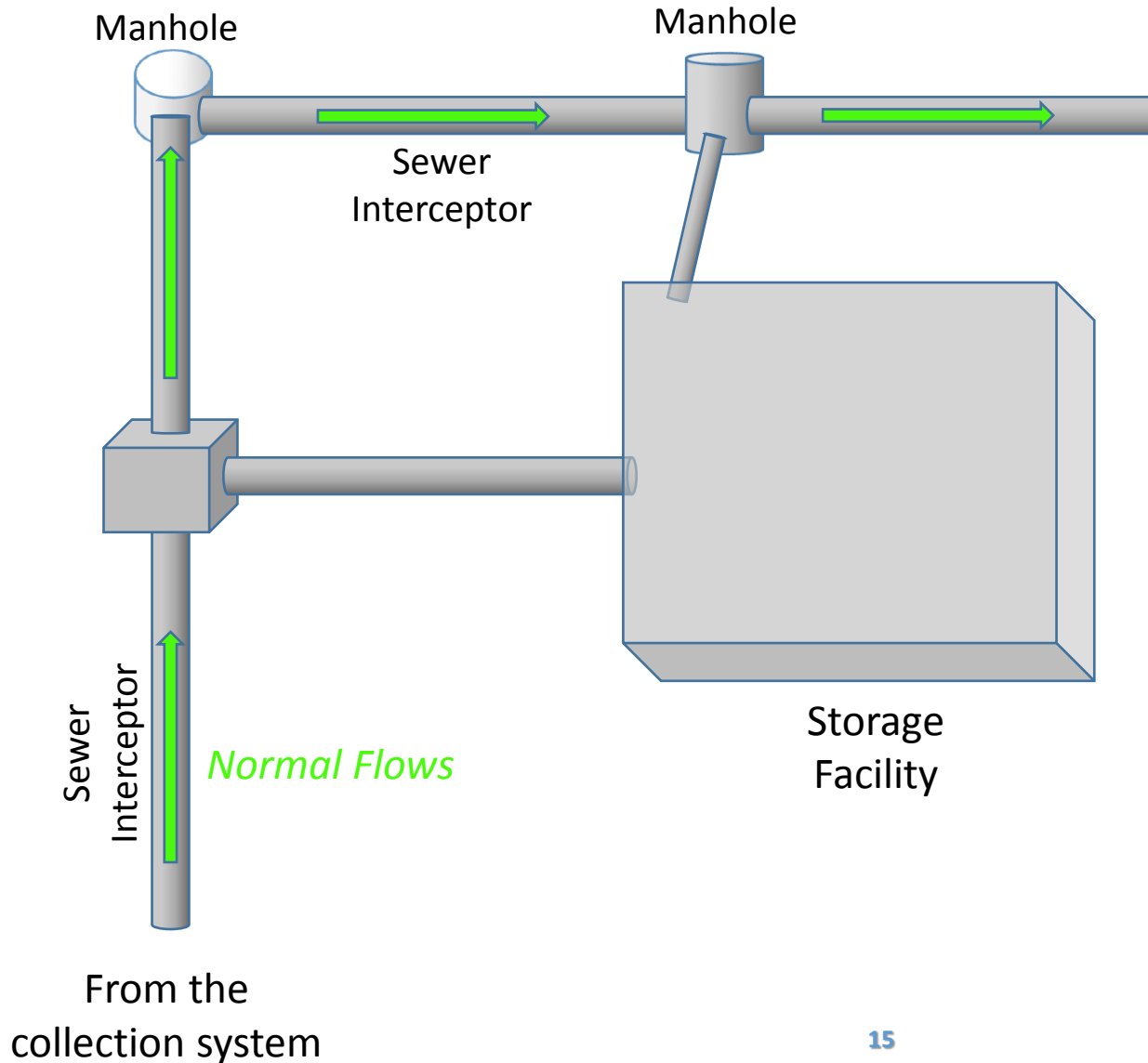
- Dale Avenue PS Rehabilitation

- **Underground Storage Facility**





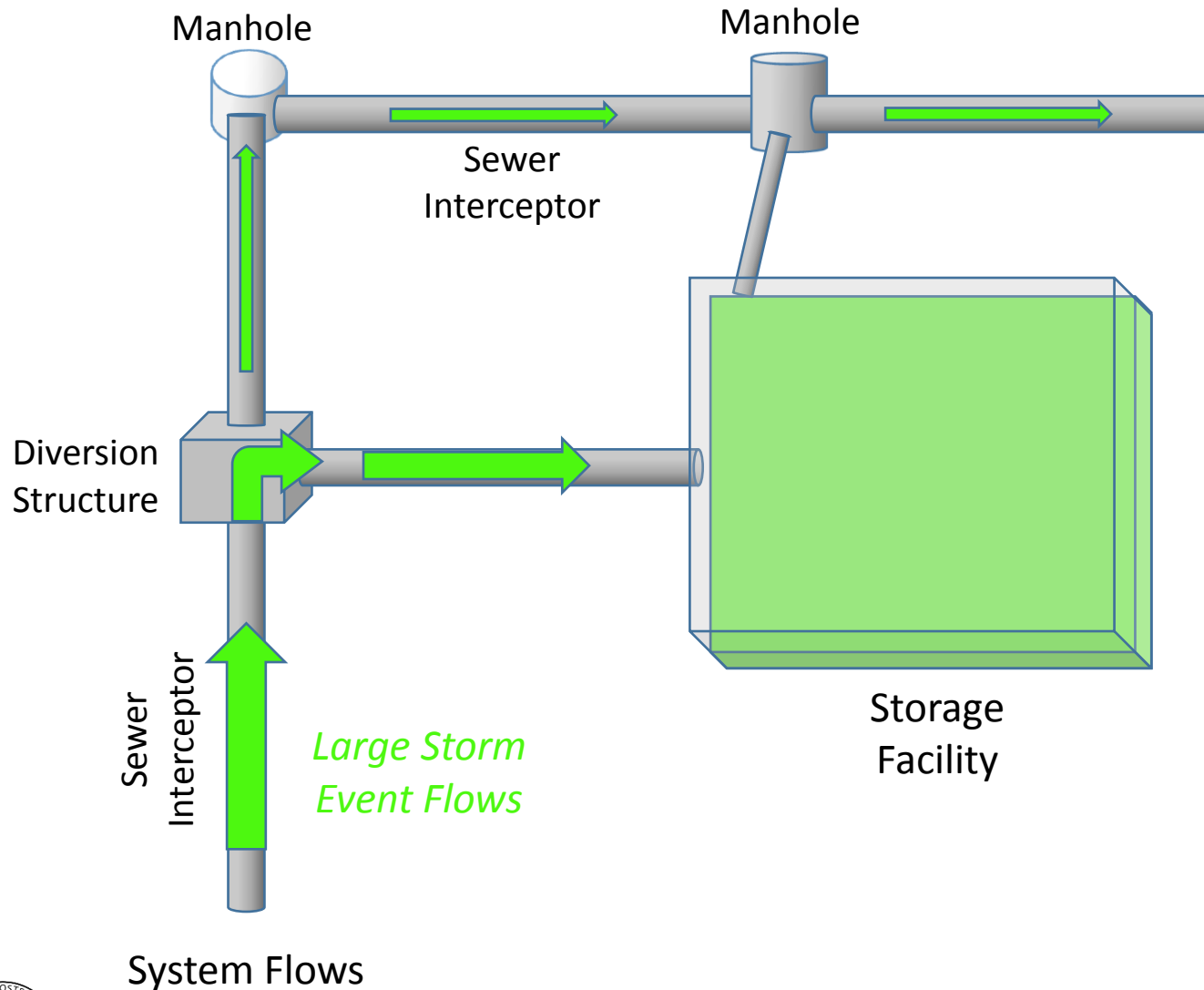
# How System Storage Works....



To San Mateo  
WWTP

Under normal  
conditions,  
**sewage** goes to  
the treatment  
plant through the  
conveyance  
system...

# How System Storage Works....

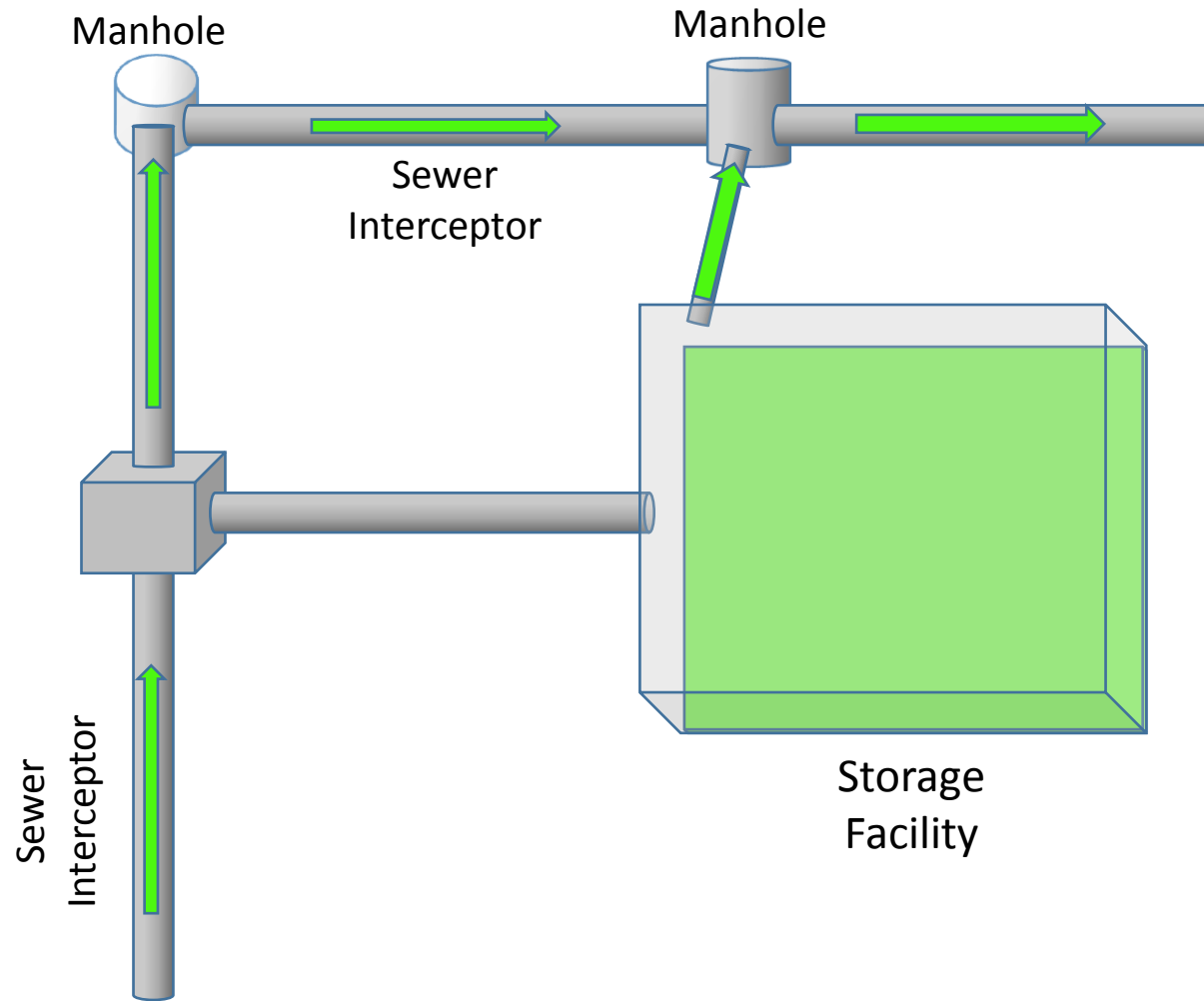


To San Mateo  
WWTP

During a storm event, when the system runs out of capacity, excess **sewage** is diverted to a storage facility...

System Flows

# How System Storage Works....



System Flows

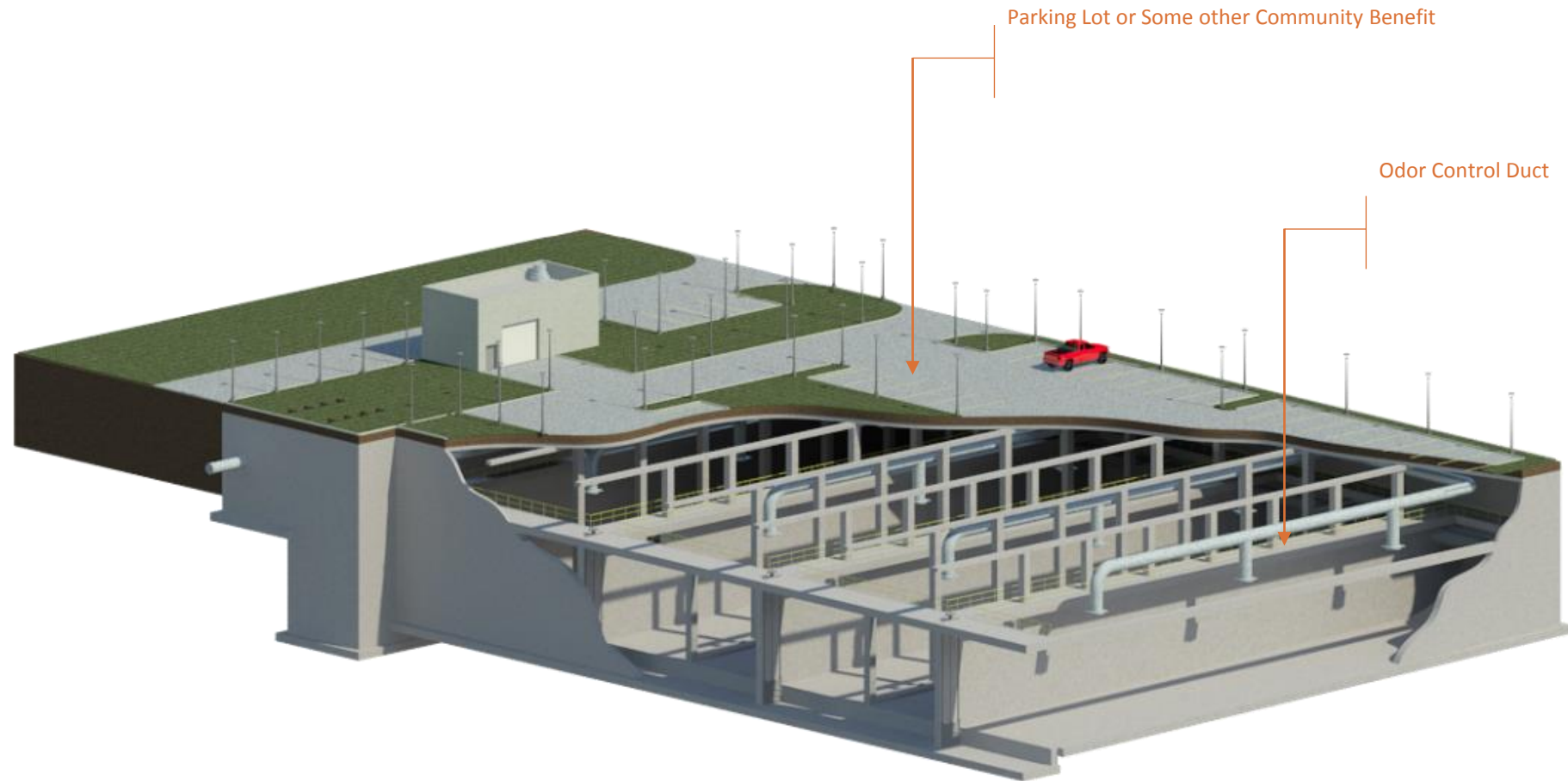
To San Mateo  
WWTP

When the system gets its capacity back, stored **sewage** is put back into the system and sent to the treatment plant.

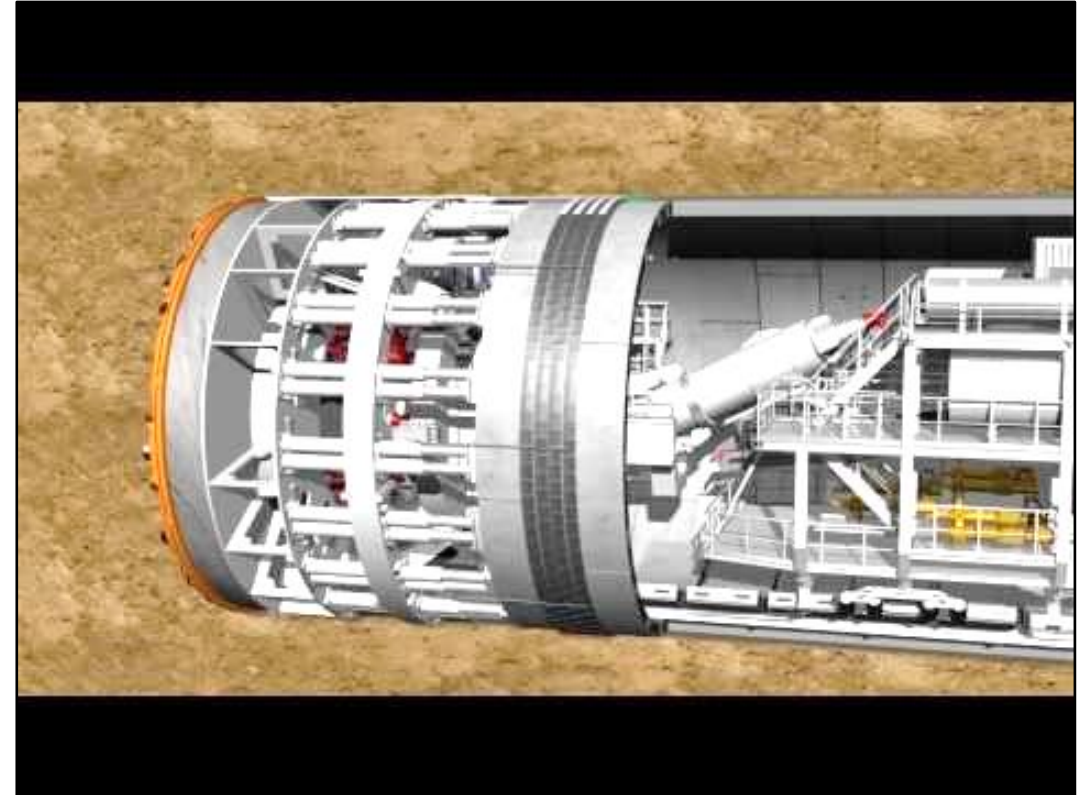
The storage is ready to use again.



# What System Storage Looks Like



# Tunnel Storage Facility





# Underground Storage Facilities – Examples & Features



- Underground Storage Facilities can be constructed underneath parks, play fields, parking lots, roads, etc.

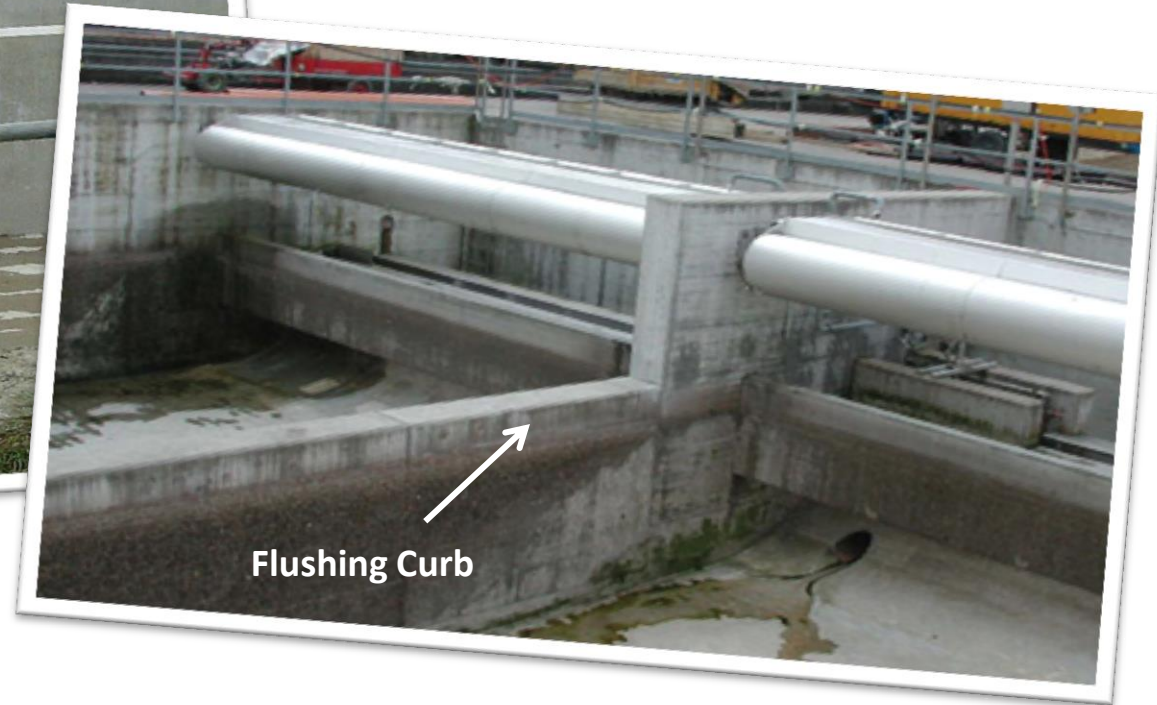
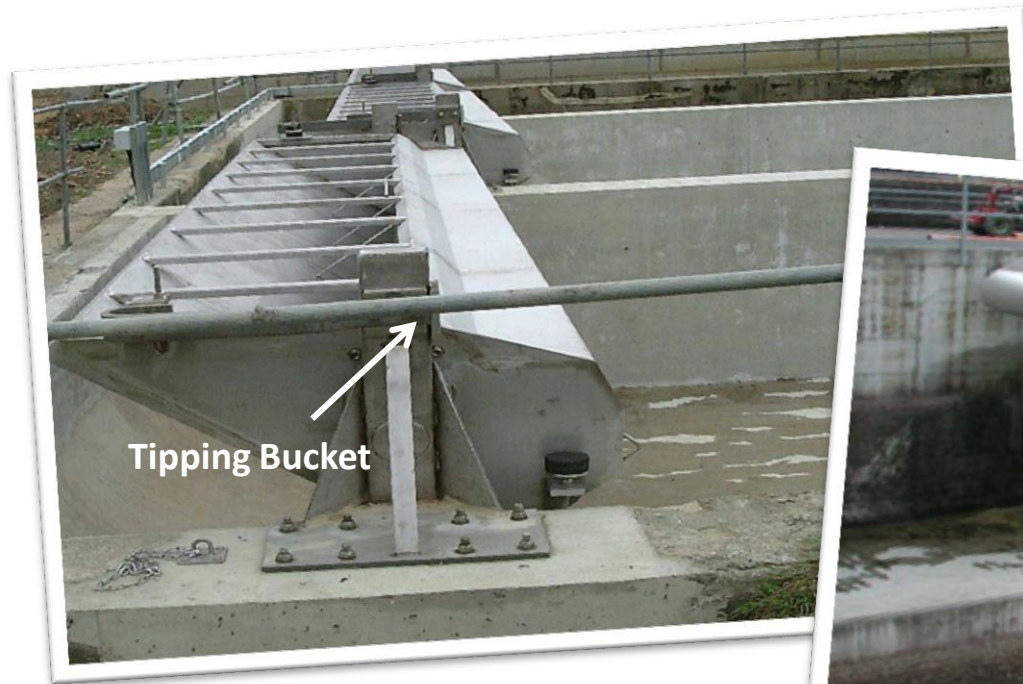


- Odor control provided
- Self-cleaning features aid maintenance



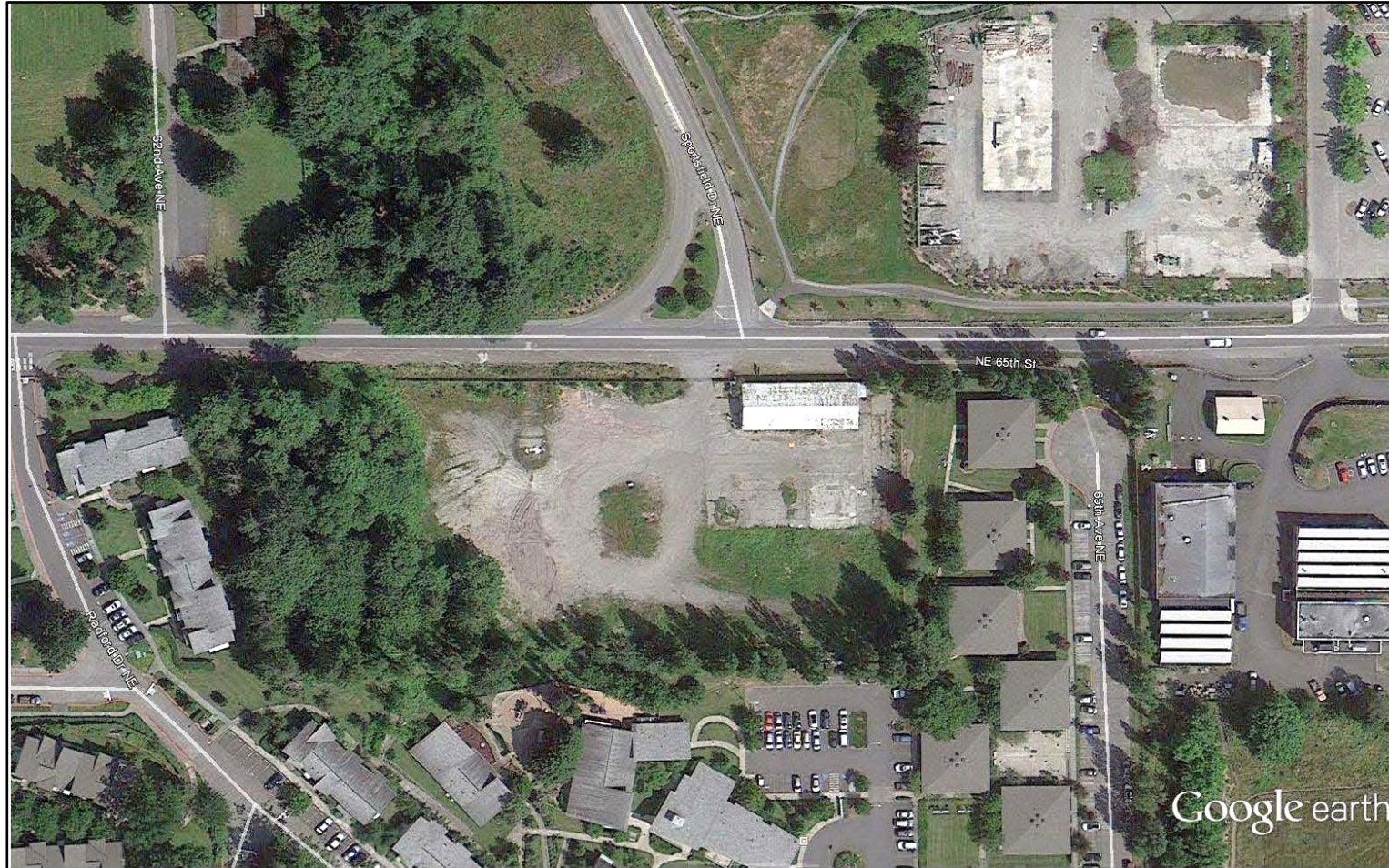


# Odor Control, Self-Cleaning, & Maintenance



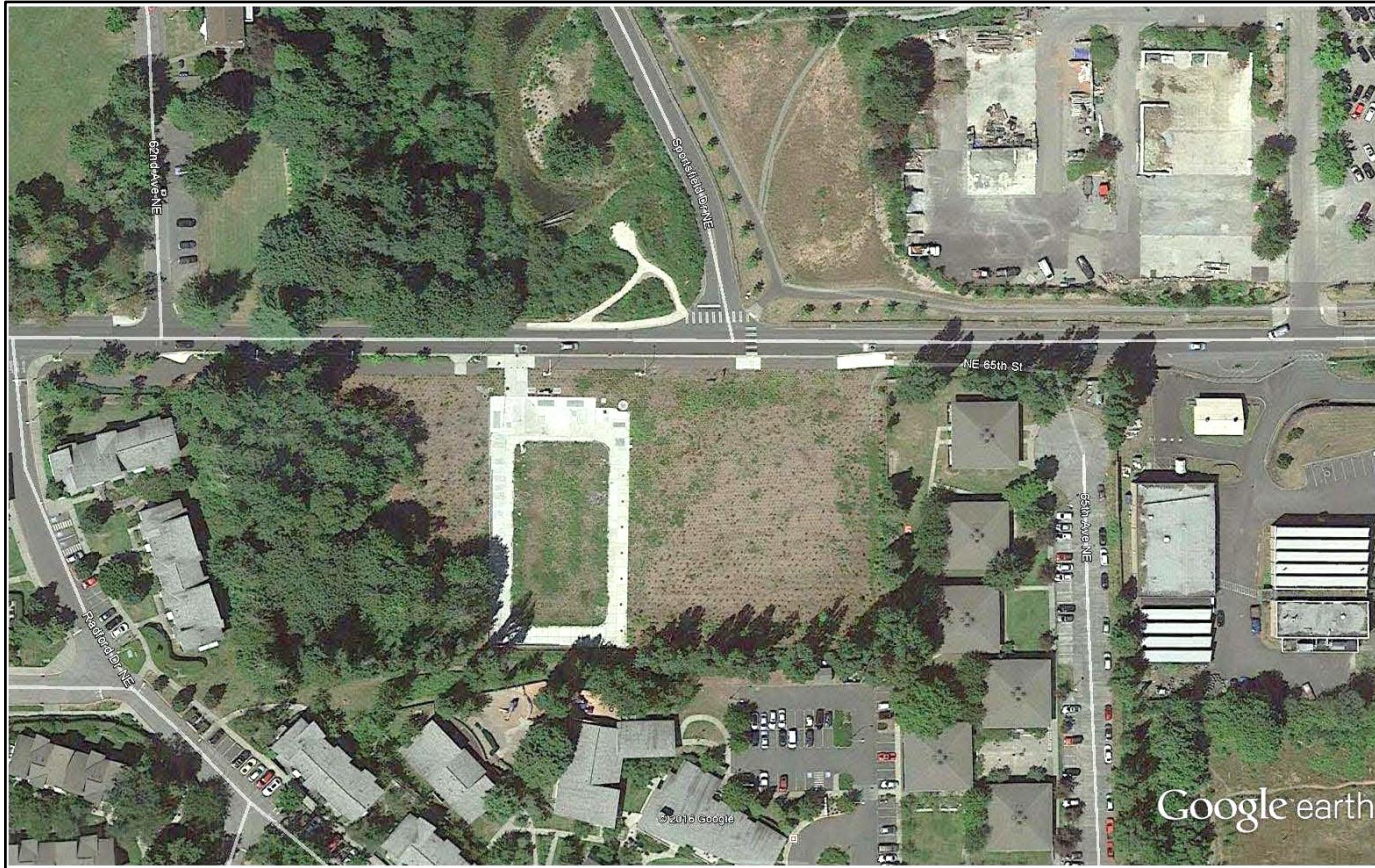


# Underground Storage Facilities – Windermere Tank (Before Construction)



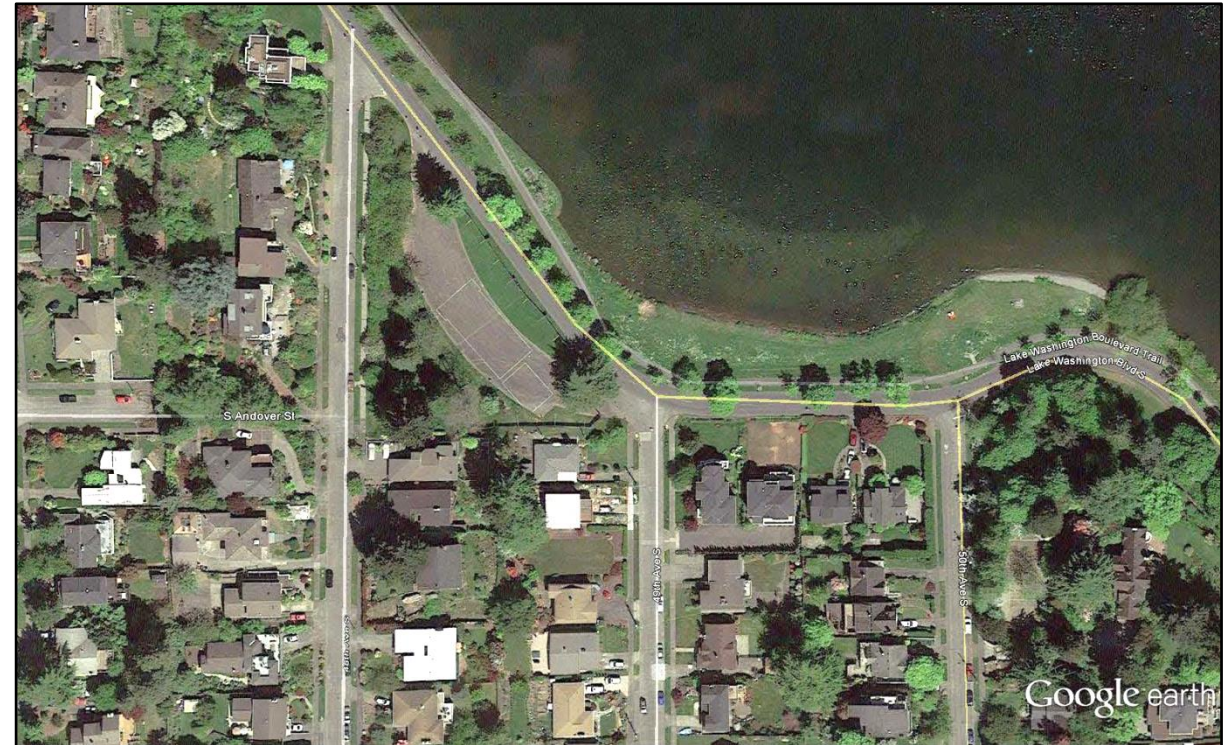


# Underground Storage Facilities – Windermere Tank (Completed)



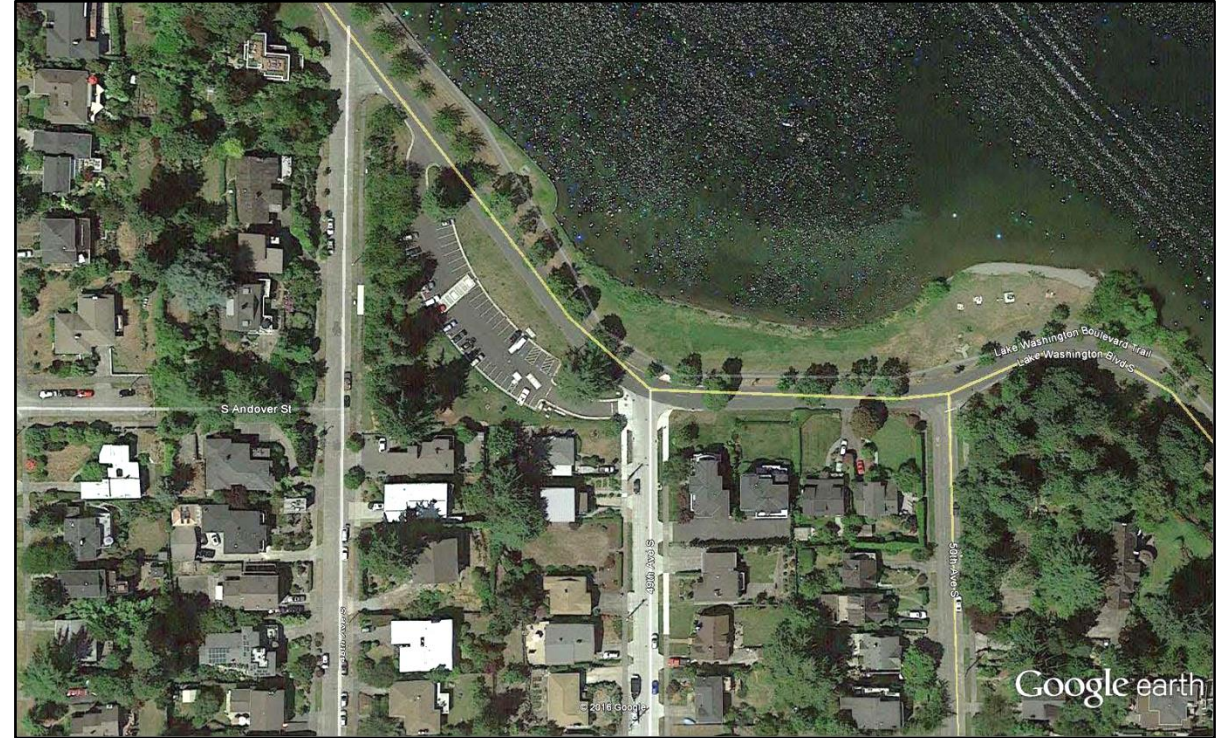


# Underground Storage Facilities – Genesee Tanks (Before Construction)





# Underground Storage Facilities – Genesee Tanks (Completed)



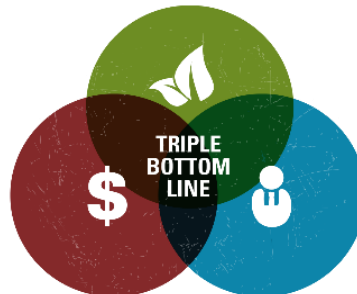


# Underground Storage Facilities – Genesee Tanks (Completed)



# Storage Site Evaluation Criteria

Number of Alternatives	55	5	5	2	1
	PEIR	Project Design Team	Community & Commissions	Community & Commissions	Council
Criteria	<u>Space</u> <ul style="list-style-type: none"> <li>• Municipal property</li> <li>• Schools</li> <li>• Undeveloped property</li> <li>• Private property</li> <li>• No existing residential, state, or federal property included</li> <li>• Proximity</li> <li>• Storage Capacity</li> </ul>	<u>Technical</u> <ul style="list-style-type: none"> <li>• Hydraulics</li> <li>• Constructability</li> <li>• Right-of-Way</li> <li>• Contractor Laydown</li> <li>• Parking</li> <li>• Storage Capacity</li> <li>• Soil &amp; Groundwater</li> </ul>	Community Input	Community Input  and  CWP Final Evaluation	City Council Selection







Tunnel Storage

Fiesta Meadows  
Park

Expo Center  
Parking Lot

Hillsdale Plaza

Bay Meadows Park

**Alternative Sites**



# San Mateo Event Center (Expo)





# Fiesta Meadows





# Bay Meadows





# Hillsdale Plaza & Expo Center



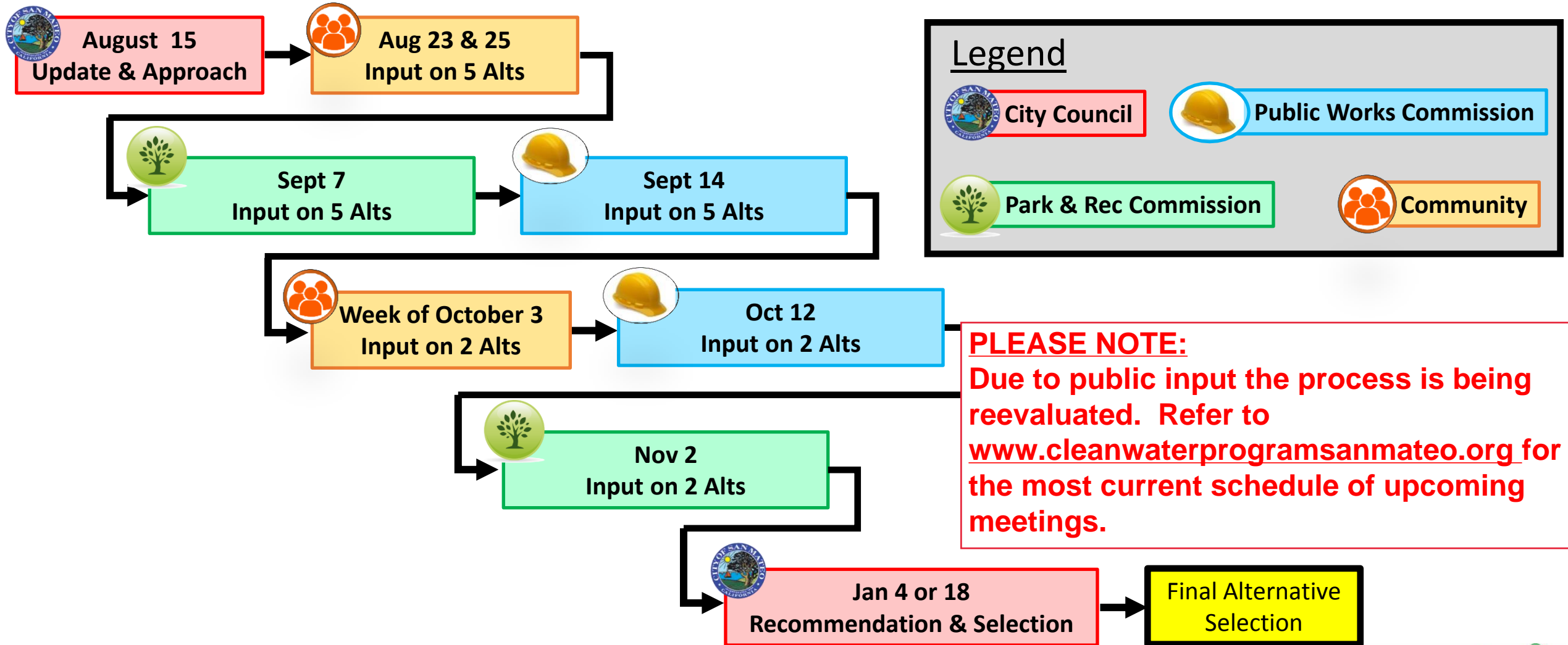


# Tunnel Storage Facility

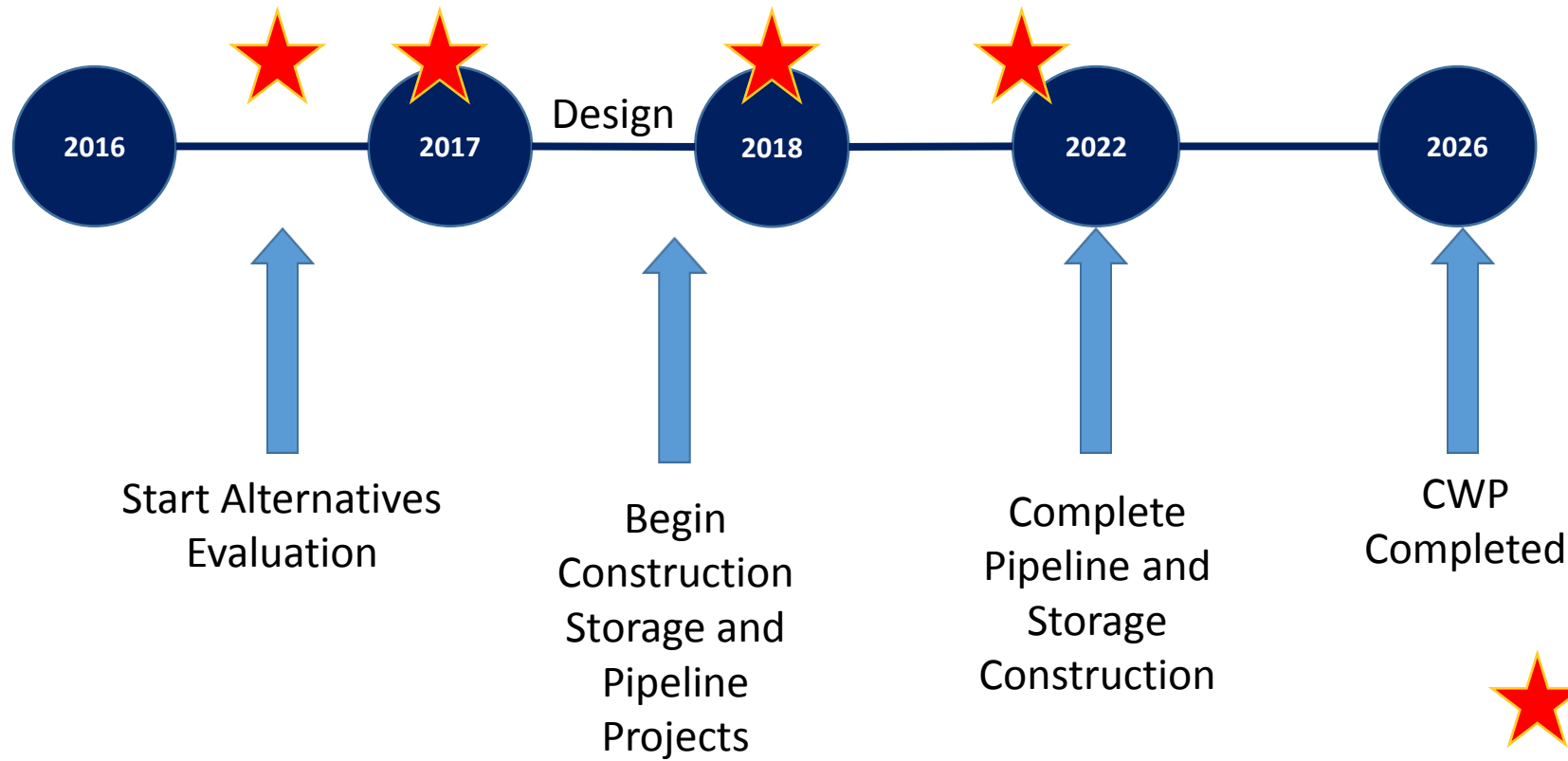




# Public Input Schedule



# Basin 2 & 3 Schedule





# Stay Informed

## Visit the Clean Water Program Website

[www.cleanwaterprogramsanmateo.org](http://www.cleanwaterprogramsanmateo.org)

## Contact Us

[info@cleanwaterprogramsanmateo.org](mailto:info@cleanwaterprogramsanmateo.org)

650-727-6870



# Public Comment

**We want to hear from you!**

- What are your questions/concerns about the five alternatives that we've presented?







# CLEANWATERPROGRAM

PROTECTING THE BAY FOR A SUSTAINABLE FUTURE



[www.cleanwaterprogramsanmateo.org](http://www.cleanwaterprogramsanmateo.org)