



Open House: Learn About the Clean Water Program March 22nd, 23rd, 30th, 2016

Cathi Zammit
Clean Water Program Manager

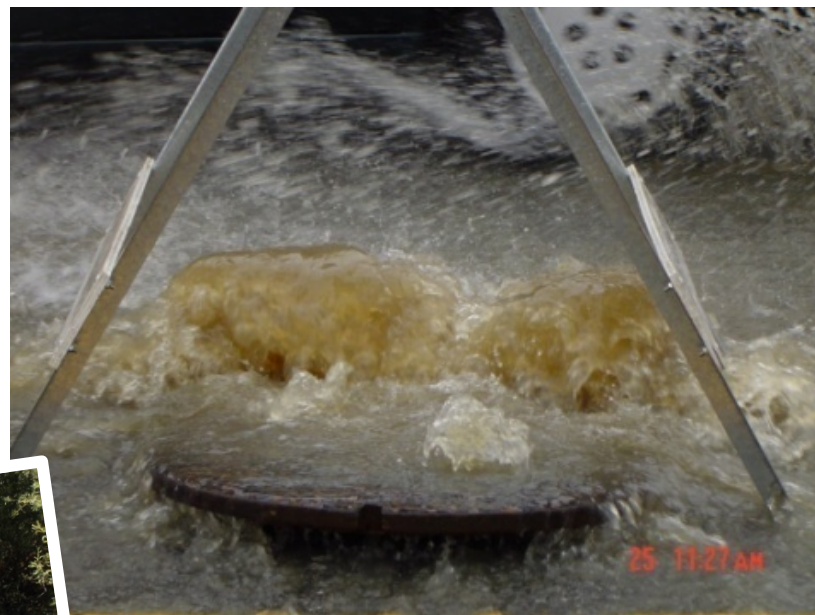


Wastewater Management System



Why?

Insufficient Capacity – Sewer Overflows



Aging WWTP Facilities



Regulatory Requirements

- 2009 Cease and Desist Order requiring the elimination of sanitary sewer overflows (SSOs)
- 2013 NPDES Permit requiring elimination of blending and an integrated approach
- Future increased nutrient removal requirements

CEASE AND DESIST ORDER NO. R2-2009-0020
REQUIRING THE

CITY OF SAN MATEO
TOWN OF HILLSBOROUGH
CRYSTAL SPRINGS COUNTY SANITATION DISTRICT
in
SAN MATEO COUNTY

TO
CEASE AND DESIST
DISCHARGING WASTE FROM
THEIR RESPECTIVE SANITARY SEWER SYSTEMS
IN VIOLATION
OF
REQUIREMENTS
IN
REGIONAL WATER QUALITY CONTROL BOARD
ORDER No. R2-2007-0006
WATER QUALITY CONTROL BOARD

San Francisco Bay Regional Water Quality Control Board
ORDER No. R2-2013-0006
NPDES No. CA0037541

The following discharger and discharge point are subject to the waste discharge requirements set forth in this Order.

Table 1. Discharger Information

| | |
|--------------------|---|
| Discharger | City of San Mateo and City of Foster City Estero Municipal Improvement District, a joint powers authority |
| Name of Facility | City of San Mateo Wastewater Treatment Plant and its wastewater collection system |
| CIWQS Place Number | 255420 |
| Facility Address | 2050 Detroit Drive, San Mateo, CA 94404 |

The U.S. Environmental Protection Agency (USEPA) and the Regional Water Quality Control Board have classified this discharge as a major discharge.

Table 2. Discharge Location

| Discharge Point | Effluent Description | Discharge Point Latitude | Discharge Point Longitude | Receiving Water |
|-----------------|---|--------------------------|---------------------------|-------------------------|
| 001 | Secondary and Advanced Secondary Treated Municipal Wastewater | 37° 34' 50" N | 122° 14' 45" W | Lower San Francisco Bay |



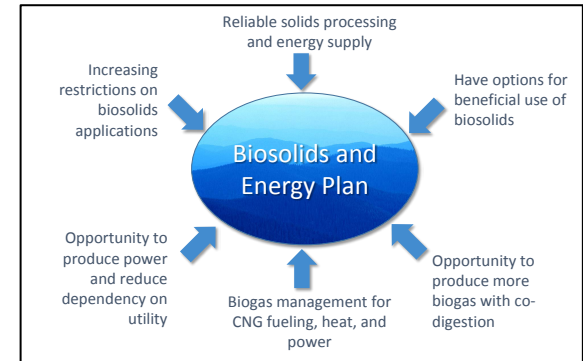
Opportunities



Water Reuse Partnerships

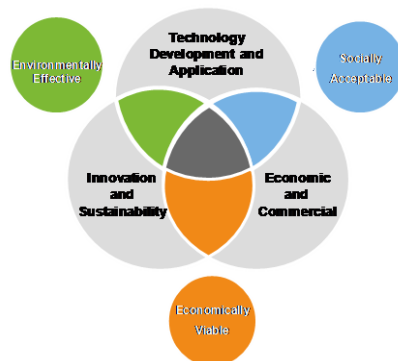


Buildings Certification



Biosolids & Energy Master Plan

Technology Decision Framework



Clean Water Program's Sustainability Triple-Bottom-Line Approach

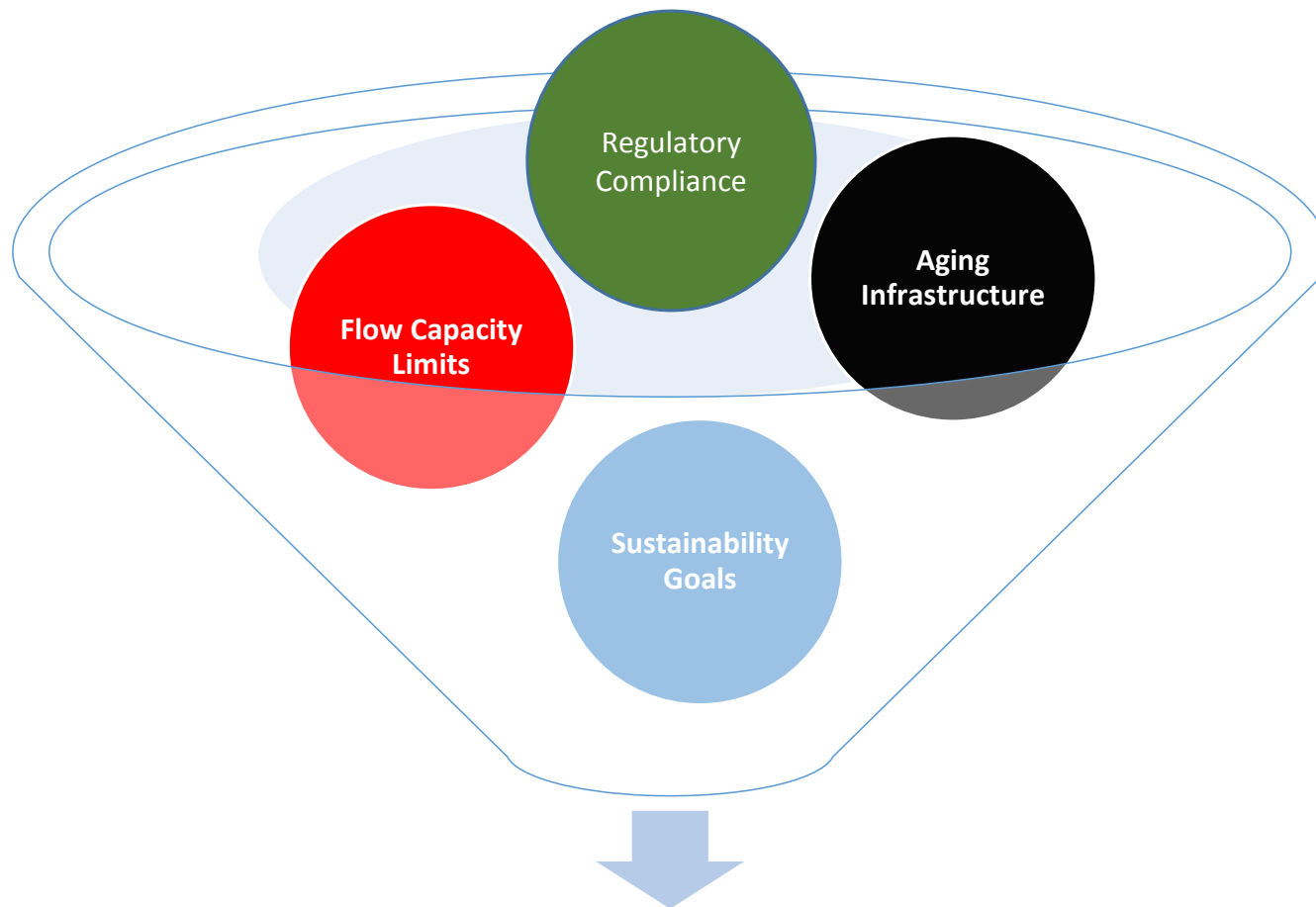


Infrastructure Certification



Green Construction





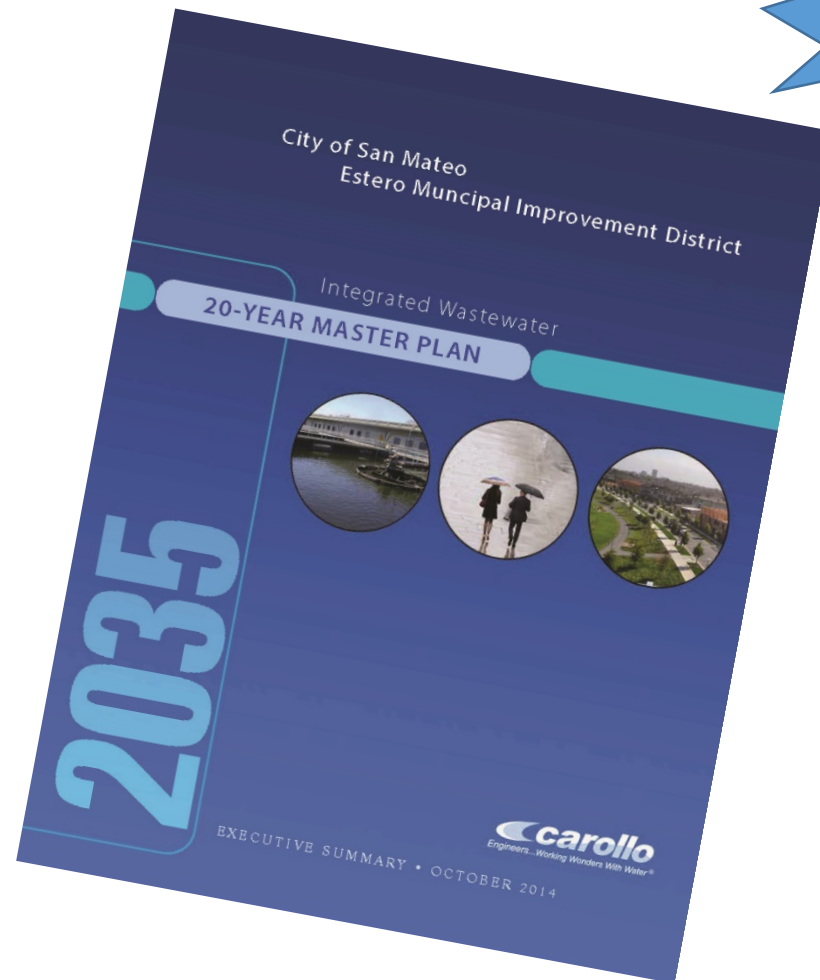
Clean Water Program



Draft Integrated Wastewater Master Plan

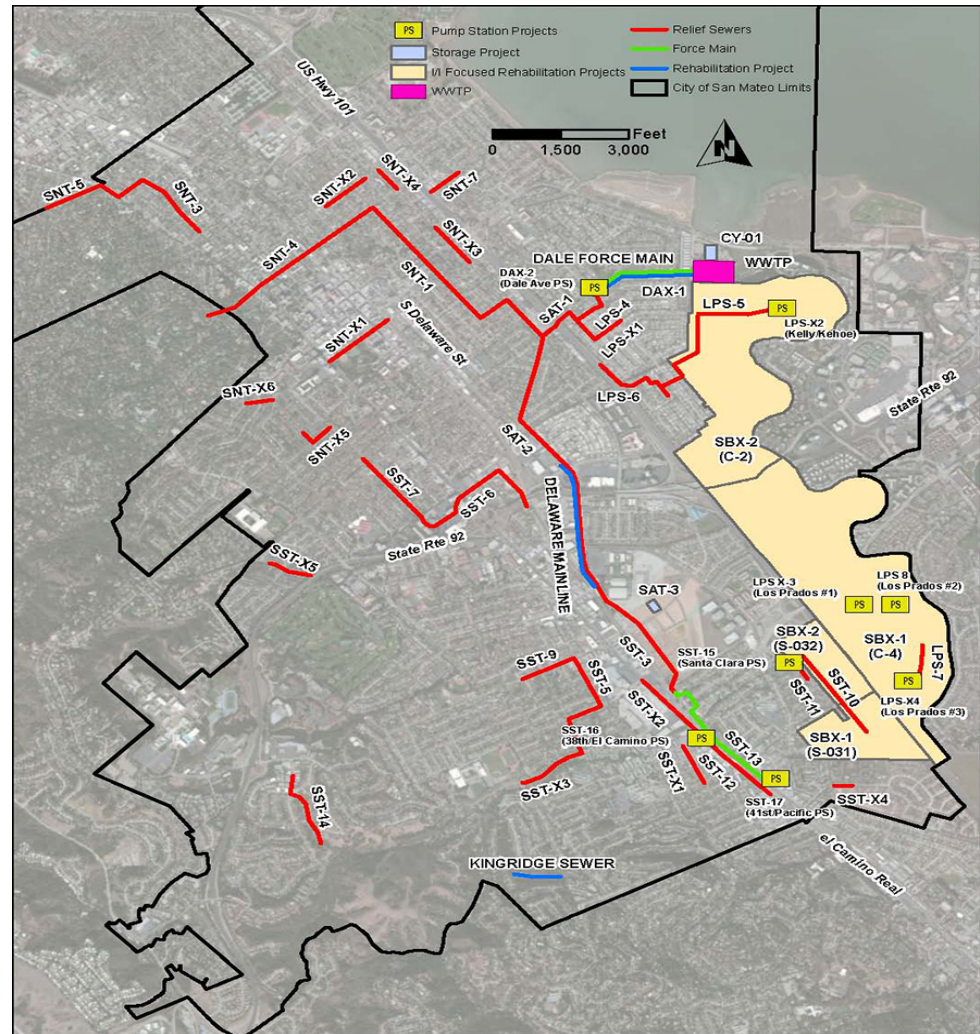
- Completed in 2014
- Recommends Improvements for WWTP
- 20-year plan
- Integrated approach with collection system

What?





- Relief lines
- Rehabilitation
 - *Sewers*
 - *Pump stations*
- In-system storage



Please note the above map is from the 2014 Draft Integrated Wastewater Master Plan. Included for illustrative purposes only, since final project locations have yet to be determined.



Collection system improvements

Relief Sewers



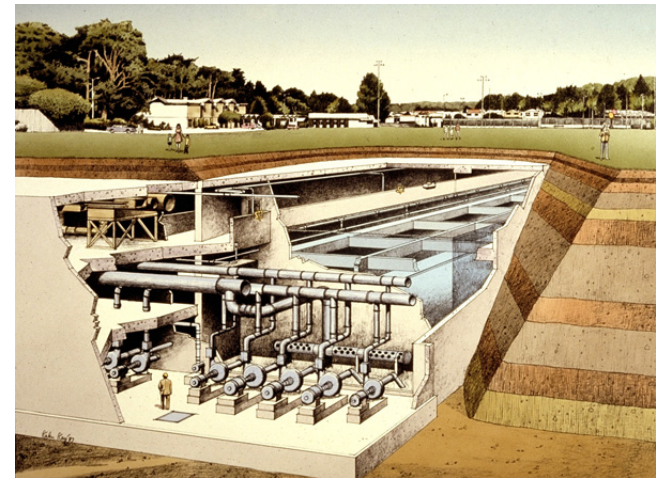
Pump Station Upgrades



Collection System Improvements

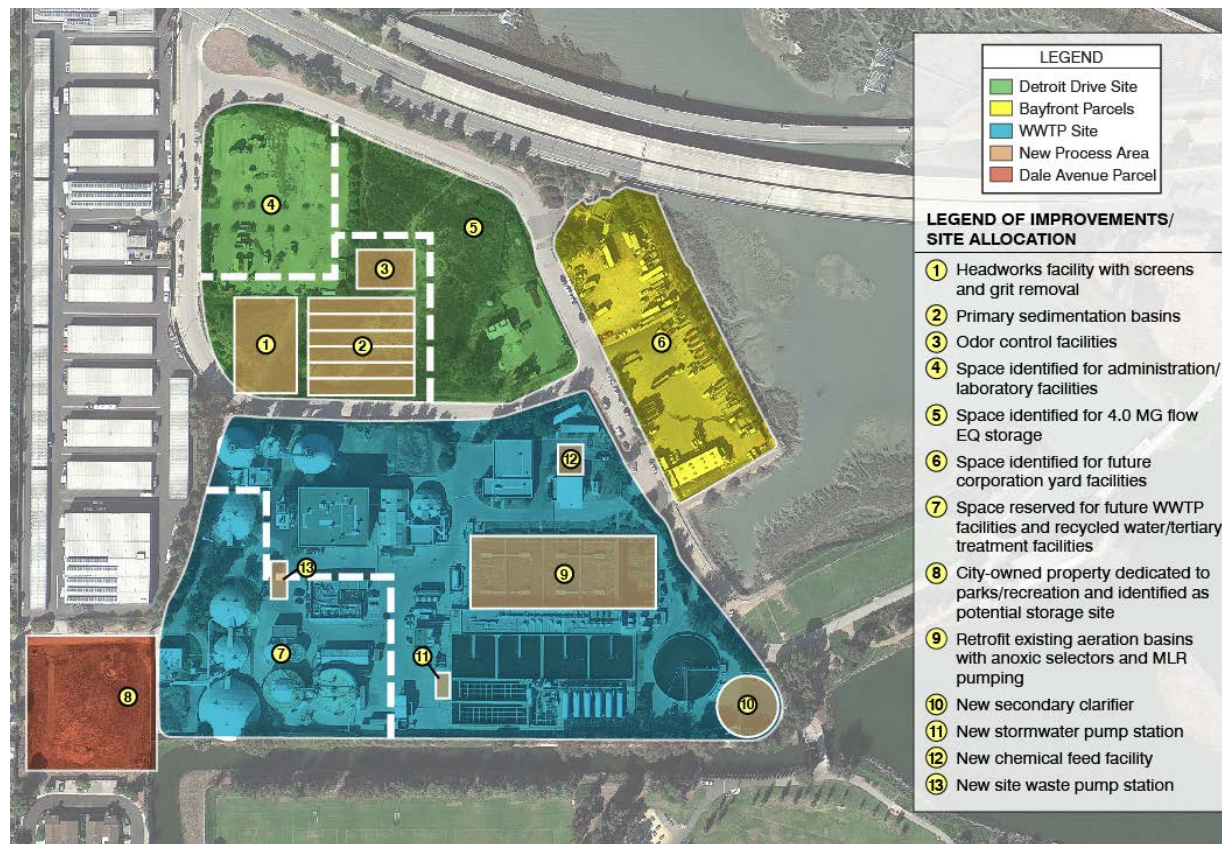
Storage Basins

- Storage basins can be constructed underneath parks, play fields or parking lots
- Odor control provided
- Self-cleaning features aid maintenance



Wastewater Treatment Plant (WWTP) Improvements

- New headworks/primaries
- Secondary Improvements
- Equalization basin
- New Admin/Corp Yard
- Future Filtration/Recycled Water



2014 Draft Integrated Master Plan Approach

How?

Clean Water Program



Program Management Office



CWP Program Advisor



Alternative Technology Approaches



Program Chartered

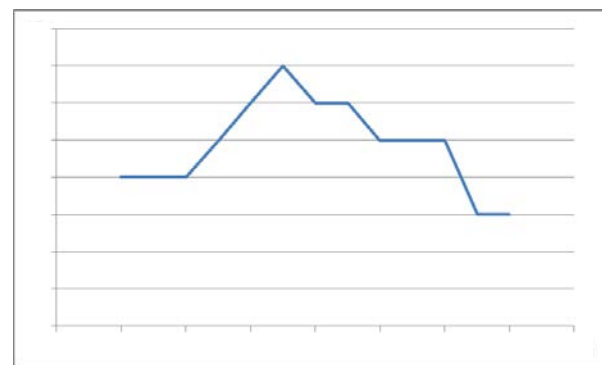


Program Cost

\$900 Million



Low Interest Loans



Gradual Rate Increases

Partner Cost Sharing



*Crystal Springs
County Sanitation
District*

4



Clean Water Program Schedule



- Start Designs
- PEIR Certification
- SRF Loan Appl.
- Permits
- WWTP Site Prep
- Start Construction – Collection System

CWP completed

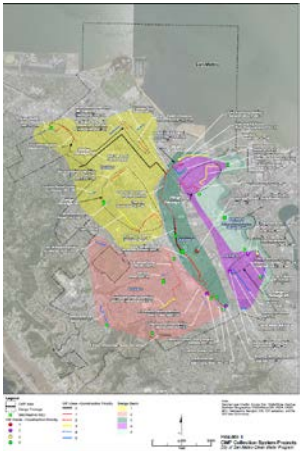
 = Recycled Water





Next Steps

Conceptual Design Progress



CEQA Process and Environmental Permits



Recycled Water Study



Water Reuse Partnerships

Sustainability Metrics – Envision System



Infrastructure Certification

SRF Loan Application

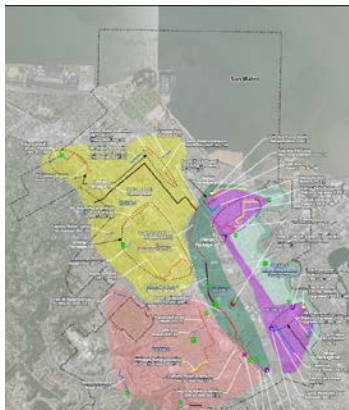


Energy Recovery – Biosolids Master Plan



Clean Water Program – Benefits

Replace Aging Infrastructure -
Provide Reliable Service

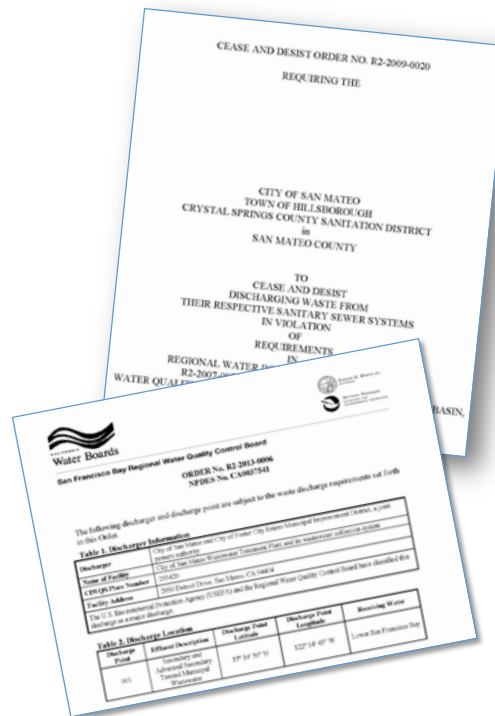


Bundled
Collection System



WWTP

Provide Higher Levels
of Treatment &
Capacity Assurance



Forward Thinking Approach
to Regulatory Requirements

Support Sustainability
Recycled Water &
Biosolids/Energy



Water Reuse Partnerships

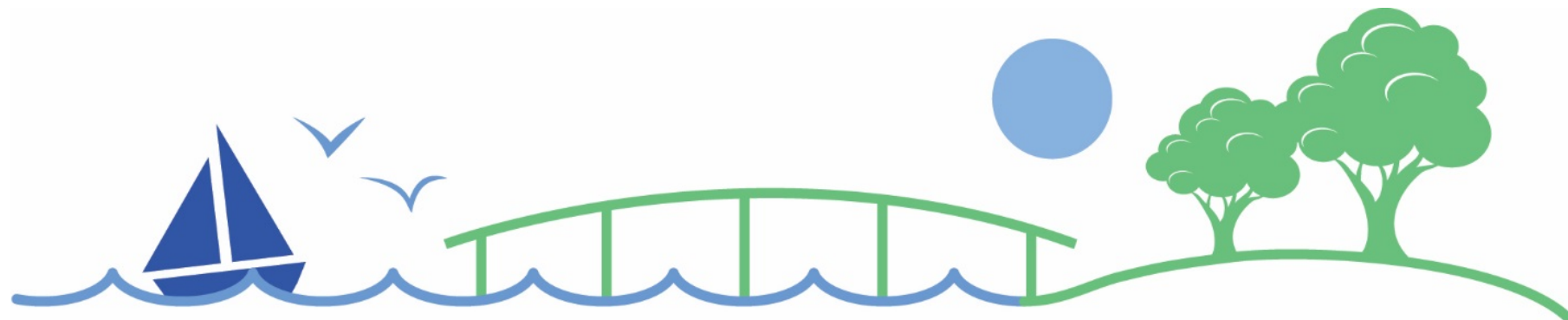


Infrastructure Certification

Information Available

- Wastewater – The Basics
- Ask a Team Member
- Comment Cards
- Email Notifications
- Visit the Clean Water Program Website
 - www.cleanwaterprogramsanmateo.org
- Contact Us –
 - info@cleanwaterprogramsanmateo.org
 - 650-727-6870





CLEAN WATER PROGRAM

PROTECTING THE BAY FOR A SUSTAINABLE FUTURE



www.cleanwaterprogramsanmateo.org

