



City Council Meeting Underground Storage Facility Alternatives Analysis

Tuesday, January 17, 2017

Tonight's Presentation

- Summary of Outreach Topics & Stakeholder Engagements
- Evaluation Criteria
- Review of Alternatives
- Summary of Analysis Results
- Public Works Commission Selected Alternatives
- Updates since December 2016 PW Commission Meeting
- City Council Questions
- Requested City Council Action



Summary of Outreach Topics & Stakeholder Engagements



Outreach & Stakeholder Discussion Topics

- Clean Water Program Goals
- Wastewater Management Basics
- Wet Weather vs Dry Weather Capacity
- Sanitary Sewer Overflow Causes, Impacts, Locations of Occurrences, & Mitigation
- Outreach Schedule & Input Opportunities/Channels
- Regulatory Requirements
- CEQA Process & Requirements
- Program Alternatives (In-System Storage, Full Conveyance, Conveyance System Replacement)
- PEIR Approval & Certification
- ISS Comprehensive Program Approach



Outreach & Stakeholder Discussion Topics

- Underground Storage Basics
- Impact Mitigation: Noise, Odor, Vibration, Site Usage, Traffic, etc.
- Seismic & Leak Resistant Design & Considerations
- Surface Restoration / Potential Improvements
- Self-Cleaning and O&M Activities
- Modeled Predictions of Annual Storage Use
- Estimated Costs & Construction Durations
- Alternative Selection Process & Criteria
- Removal of Bay Meadows Park & Addition of Corp Yard Alternatives
- Alternatives Analysis Evaluation Criteria
- Illustrative Storage Layouts for each Alternative
- Alternatives Analysis Results



Outreach Activities and Stakeholder Involvement

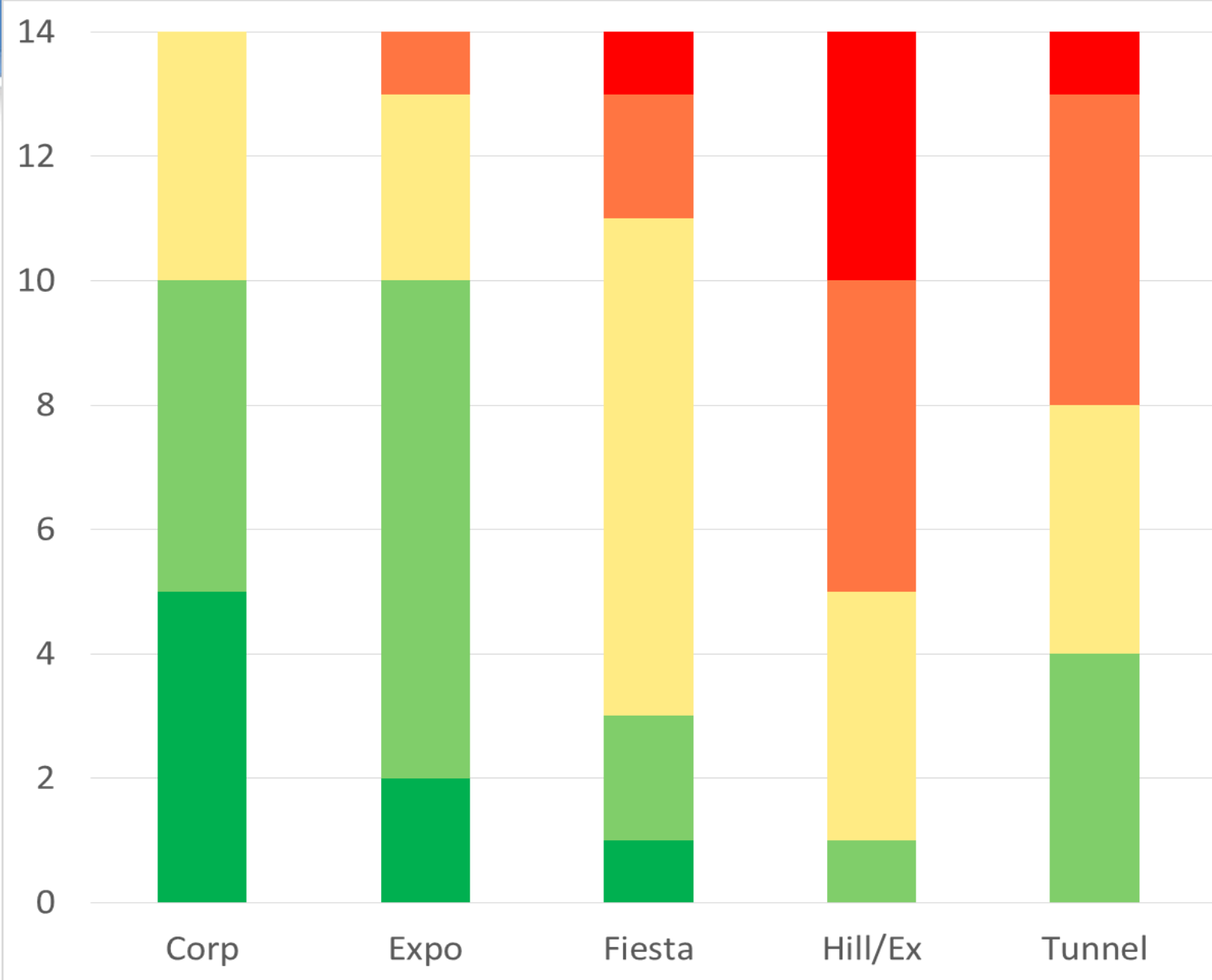
Month	City Council	Community Meetings	Parks & Rec Commission	Public Works Commission	PW O&M, Parks, & CDD Staff	Event Center Board	Bay Meadows Neigh.	Fiesta Gardens Neigh.
Aug	●	●			●			
Sept			●	●			●	●
Oct		●		●			●	●
Nov					●	●		●
Dec				●			●	●
Jan	●				●	●		

Evaluation Criteria

Same information presented at 12/14/2016 Public Works Commission Meeting



Distribution of Criteria Results



Potential Fatal Flaw
1

Below Average
2

Neutral/Average
3

Above Average
4

Advantageous
5



Heat Map – Technical Criteria

Evaluation Criteria	Corp	Expo	Fiesta	Hill/Ex	Tunnel
Construction Duration					
Construction Risks					
Ease of Operations & Maintenance and Safety					
Flexibility and Performance Risks					
Footprint Requirements for Facility					
ROW/Ownership					
Operational Complexity					



Potential Fatal Flaw 1	Below Average 2	Neutral/Average 3	Above Average 4	Advantageous 5
---------------------------	--------------------	----------------------	--------------------	-------------------



Heat Map – Environmental Criteria

Evaluation Criteria	Corp	Expo	Fiesta	Hill/Ex	Tunnel
Potential for Additional CEQA Requirements					
Traffic Impacts (a) – Likelihood for Traffic on Residential Streets					
Traffic Impacts (b) – Total Vehicle Trips for Facility Construction					



Potential Fatal Flaw

1

Below Average

2

Neutral/Average

3

Above Average

4

Advantageous

5



Heat Map – Social Criteria

Evaluation Criteria	Corp	Expo	Fiesta	Hill/Ex	Tunnel
Community Acceptance					
Existing Use Impacts (Long Term) During Operation					
Provide Constructed Benefit					
Site Use Disruption During Construction					



Potential Fatal Flaw

1

Below Average

2

Neutral/Average

3

Above Average

4

Advantageous

5



Review of Alternatives

Storage Locations





Delaware Street
Alignment Tank

Fiesta Meadows
Park

Corporation Yard

Expo Center
Parking Lot

Hillsdale Plaza

Corp Yard



Placement and size of facility is for illustrative purposes and may change as design proceeds



Expo Center (Various Placement Options)

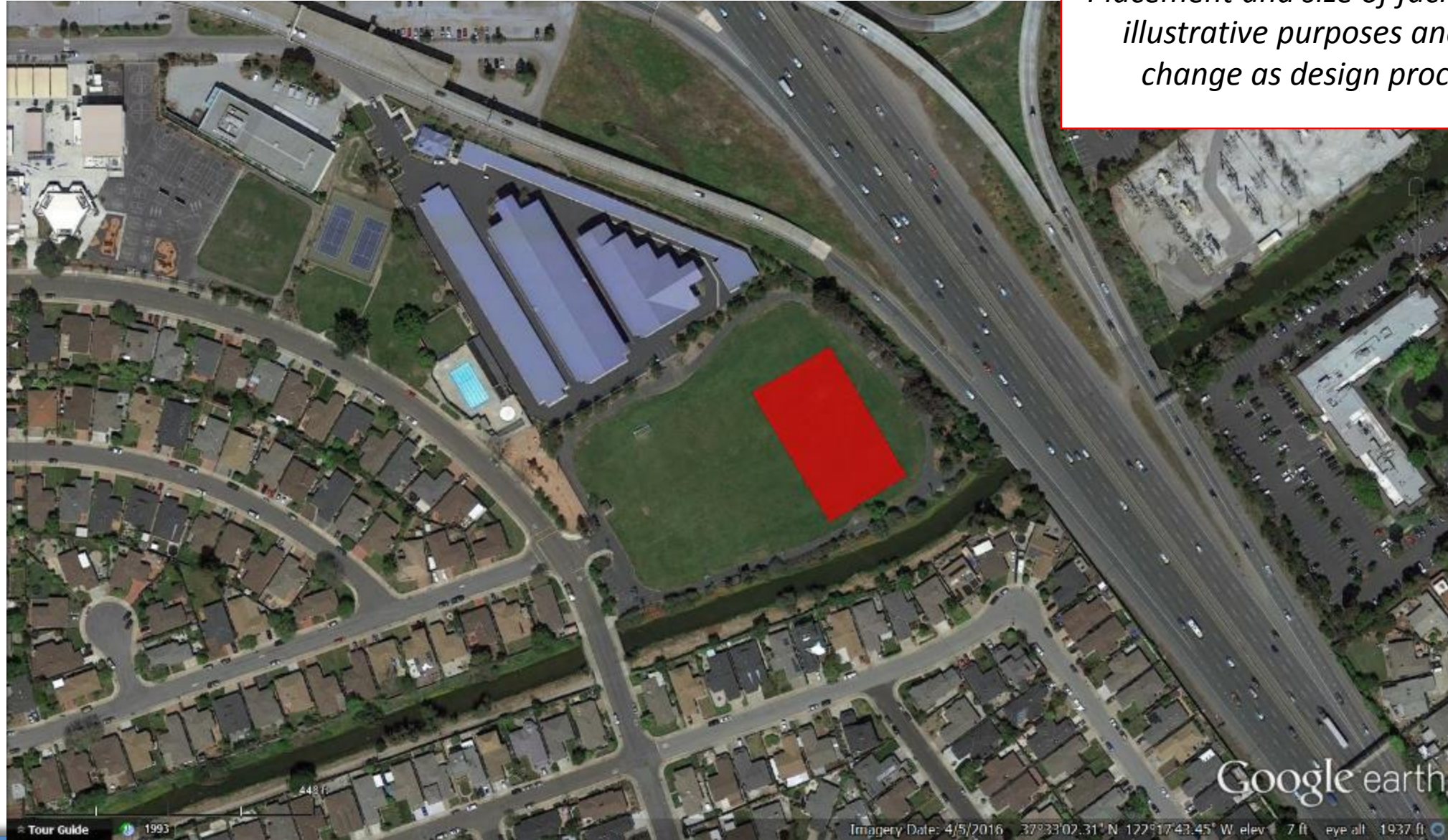


Placement and size of facility is for illustrative purposes and may change as design proceeds

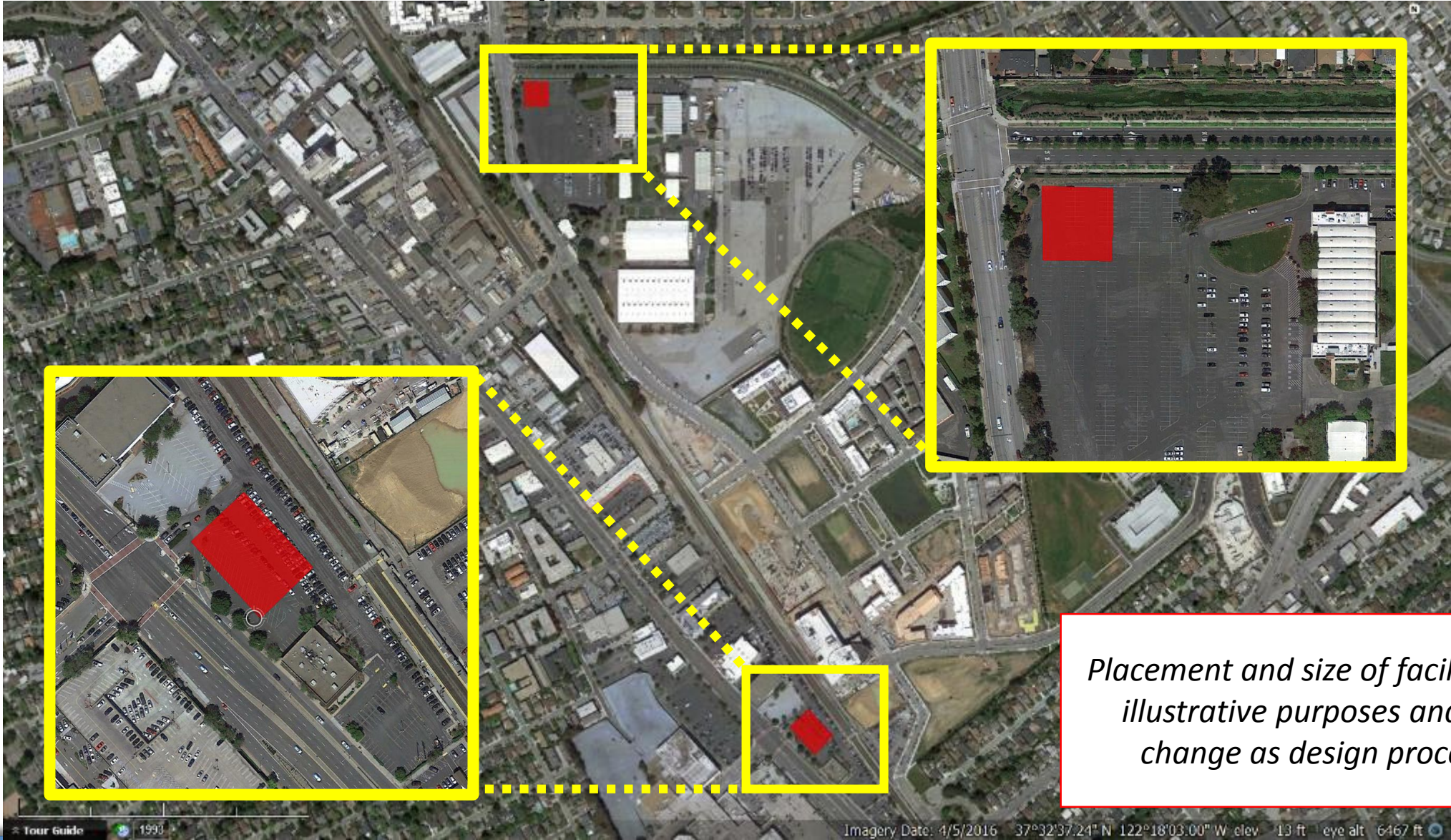


Fiesta Meadows Park

Placement and size of facility is for illustrative purposes and may change as design proceeds



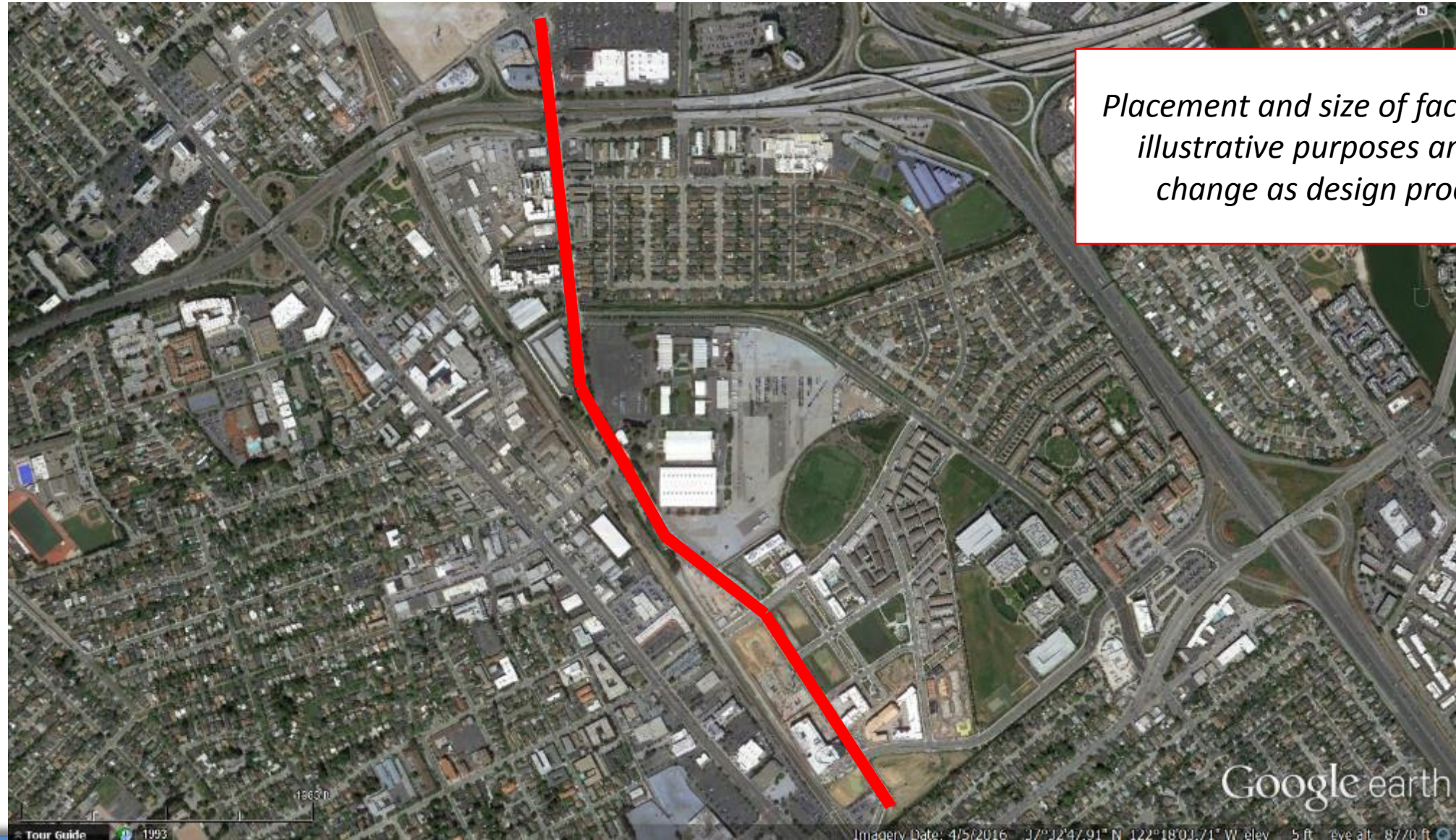
Hillsdale Plaza/Expo Center



Placement and size of facility is for illustrative purposes and may change as design proceeds



Delaware Street Tunnel



Placement and size of facility is for illustrative purposes and may change as design proceeds

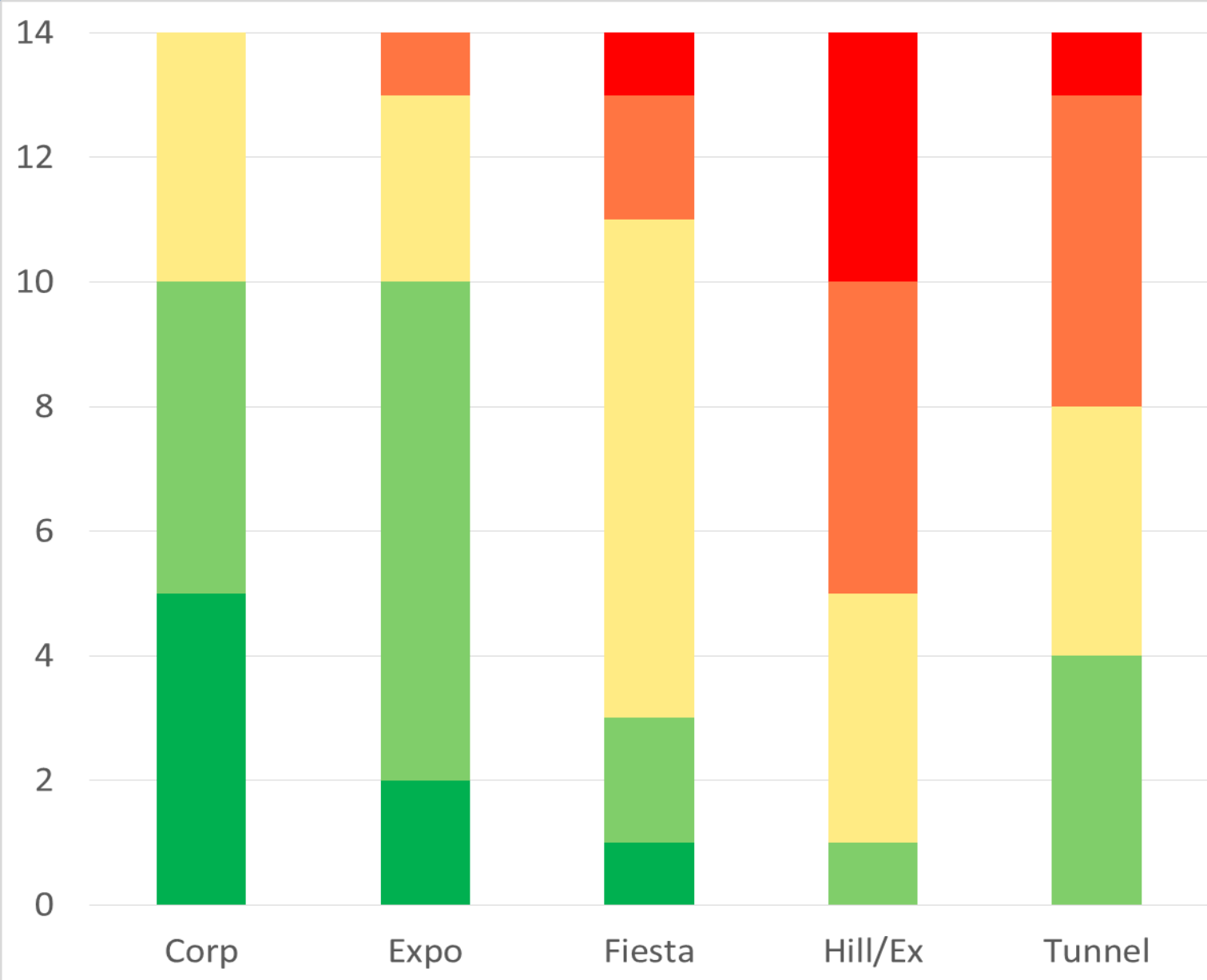


Summary of Results

Non-Monetary and Costs

As of 12/09/2016





Distribution of Criteria Results



Potential Fatal Flaw
1

Below Average
2

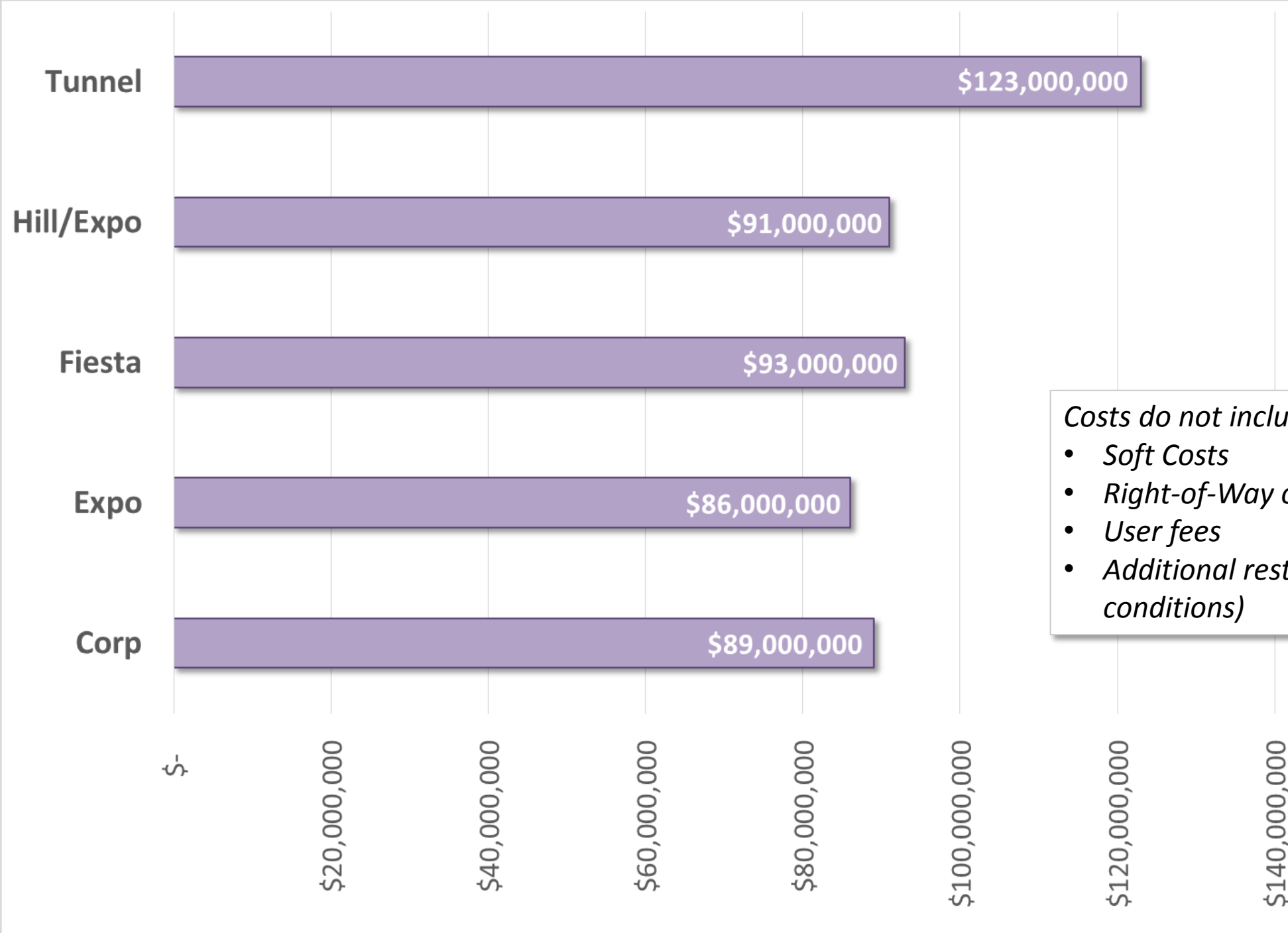
Neutral/Average
3

Above Average
4

Advantageous
5



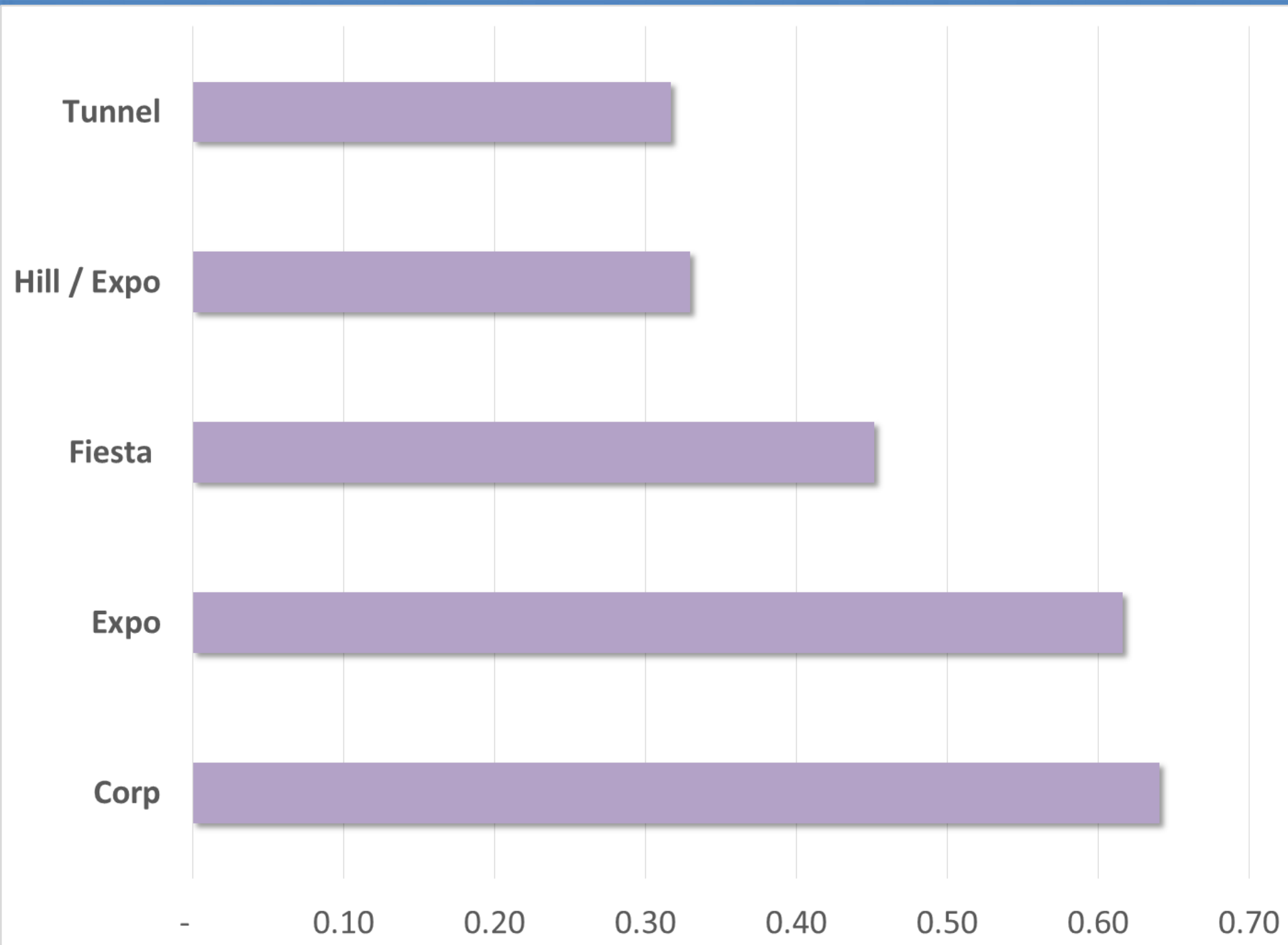
Life Cycle Costs



Costs do not include:

- *Soft Costs*
- *Right-of-Way or easement costs*
- *User fees*
- *Additional restoration (beyond existing conditions)*

Benefit/Cost

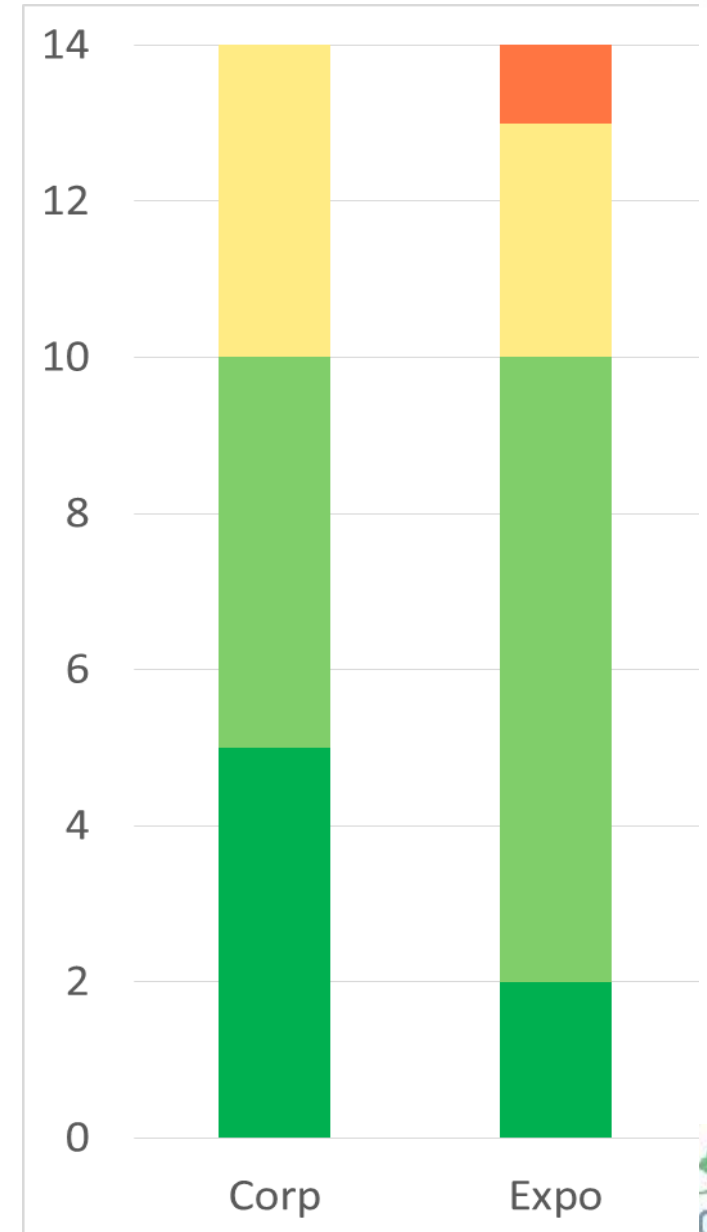


PW Commission Selected Alternatives

For further evaluation of potential impacts



Corp Yard & Event Center



Public Input Received Since December 2016 PW Commission Meeting



Updated Community Input

Evaluation Criteria	Expo Previous Rating	Expo Updated Rating
Community Acceptance	Above Average 4	Neutral/Average 3

New community input indicated concern about placement of a storage facility near the southern or eastern sides of the Event Center property (near Bay Meadows Park or Nueva School), and any associated impacts





UPDATED Distribution of Criteria Results



Potential Fatal Flaw
1

Below Average
2

Neutral/Average
3

Above Average
4

Advantageous
5



City Council Questions



Requested City Council Action

Confirm the selection of the Corporation Yard and the Event Center as the two sites selected for further analysis.





www.cleanwaterprogramsanmateo.org