



# **Public Works Commission Meeting Underground Storage Facility Alternatives Analysis**

**Wednesday, December 14, 2016**

# Tonight's Presentation

- Overview
- Evaluation Criteria
- Review of Alternatives
- Summary of Results
- Commissioner Questions
- Requested Public Works Commission Action



# Overview

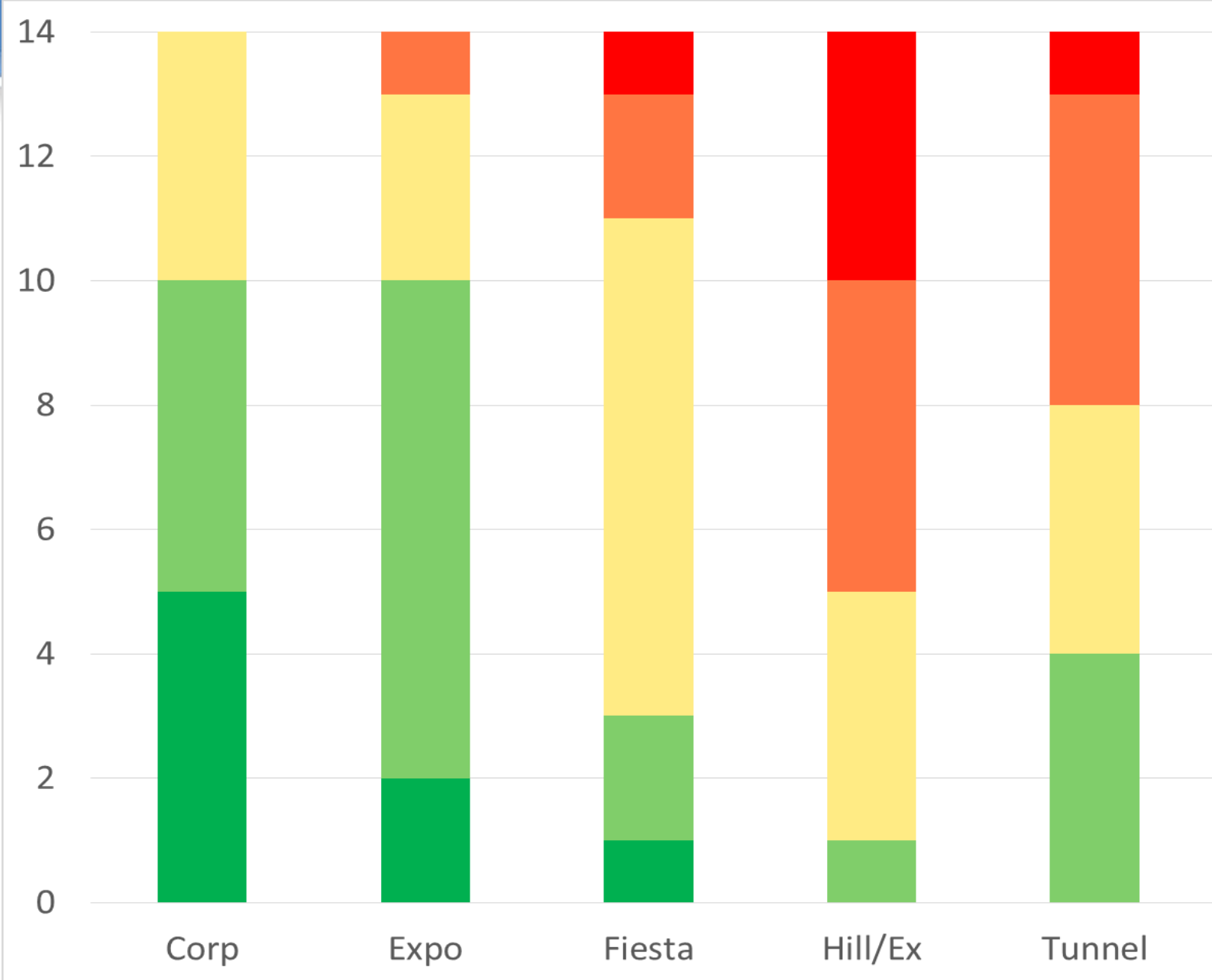
- *What activities occurred since last meeting with PW Commission?*
- *What are tonight's expectations and goals?*



# Evaluation Criteria



## Distribution of Criteria Results



**Potential Fatal Flaw**  
1

**Below Average**  
2

**Neutral/Average**  
3

**Above Average**  
4

**Advantageous**  
5



# Heat Map – Technical Criteria

Evaluation Criteria	Corp	Expo	Fiesta	Hill/Ex	Tunnel
Construction Duration					
Construction Risks					
Ease of Operations & Maintenance and Safety					
Flexibility and Performance Risks					
Footprint Requirements for Facility					
ROW/Ownership					
Operational Complexity					



Potential Fatal Flaw 1	Below Average 2	Neutral/Average 3	Above Average 4	Advantageous 5
---------------------------	--------------------	----------------------	--------------------	-------------------



# Heat Map – Environmental Criteria

Evaluation Criteria	Corp	Expo	Fiesta	Hill/Ex	Tunnel
Potential for Additional CEQA Requirements					
Traffic Impacts (a) – Likelihood for Traffic on Residential Streets					
Traffic Impacts (b) – Total Vehicle Trips for Facility Construction					



Potential Fatal Flaw

1

Below Average

2

Neutral/Average

3

Above Average

4

Advantageous

5



# Heat Map – Social Criteria

Evaluation Criteria	Corp	Expo	Fiesta	Hill/Ex	Tunnel
Community Acceptance	Green	Light Green	Red	Yellow	Yellow
Existing Use Impacts (Long Term) During Operation	Green	Light Green	Light Green	Yellow	Orange
Provide Constructed Benefit	Light Green	Light Green	Green	Yellow	Yellow
Site Use Disruption During Construction	Yellow	Yellow	Yellow	Orange	Yellow



Potential Fatal Flaw

1

Below Average

2

Neutral/Average

3

Above Average

4

Advantageous

5





# Review of Alternatives

Storage Locations







Delaware Street  
Alignment Tank

Fiesta Meadows  
Park

Corporation Yard

Expo Center  
Parking Lot

Hillsdale Plaza



# Corp Yard



*Placement and size of facility is for illustrative purposes and may change as design proceeds*





# Expo Center (Various Placement Options)



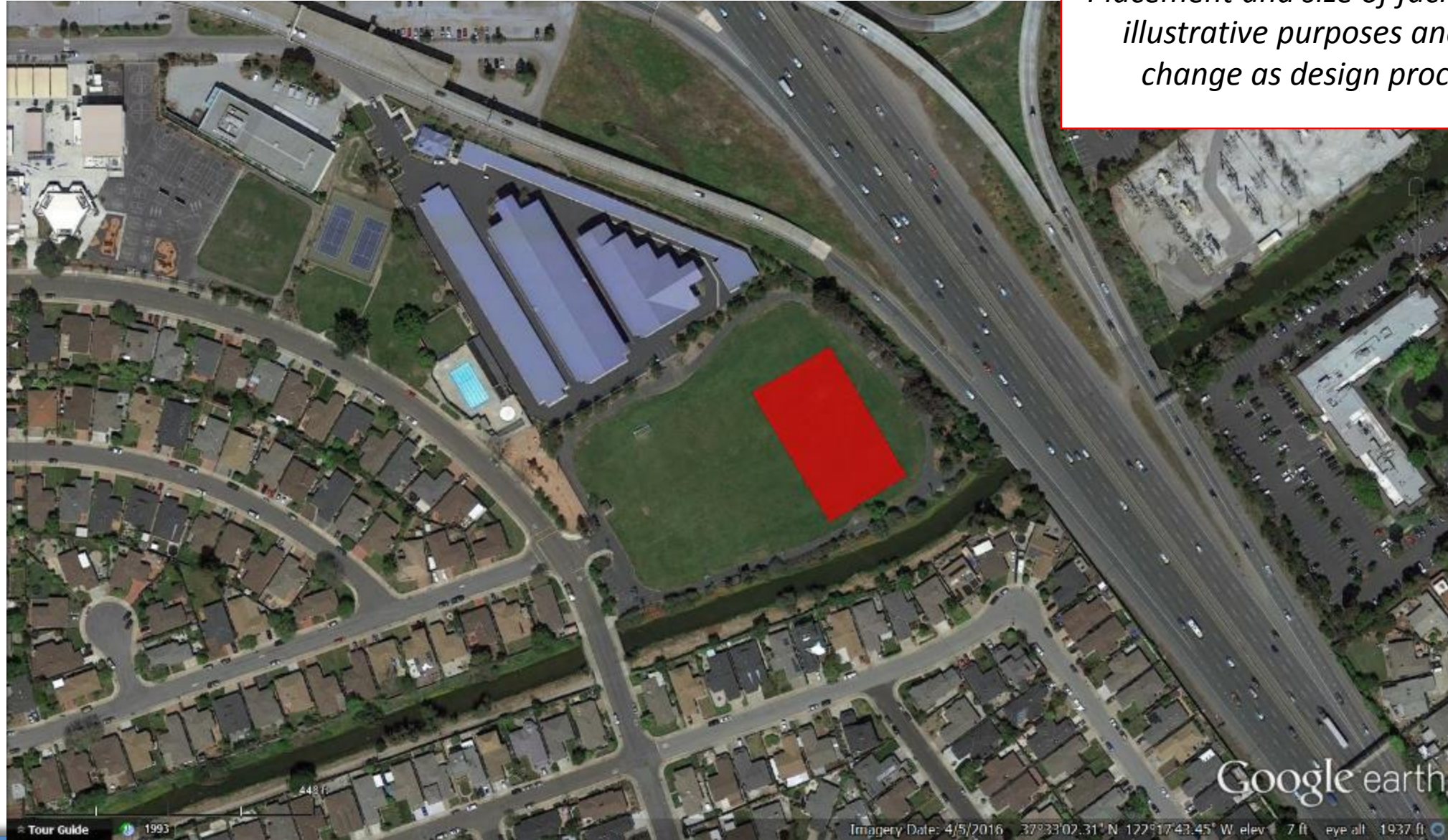
*Placement and size of facility is for illustrative purposes and may change as design proceeds*





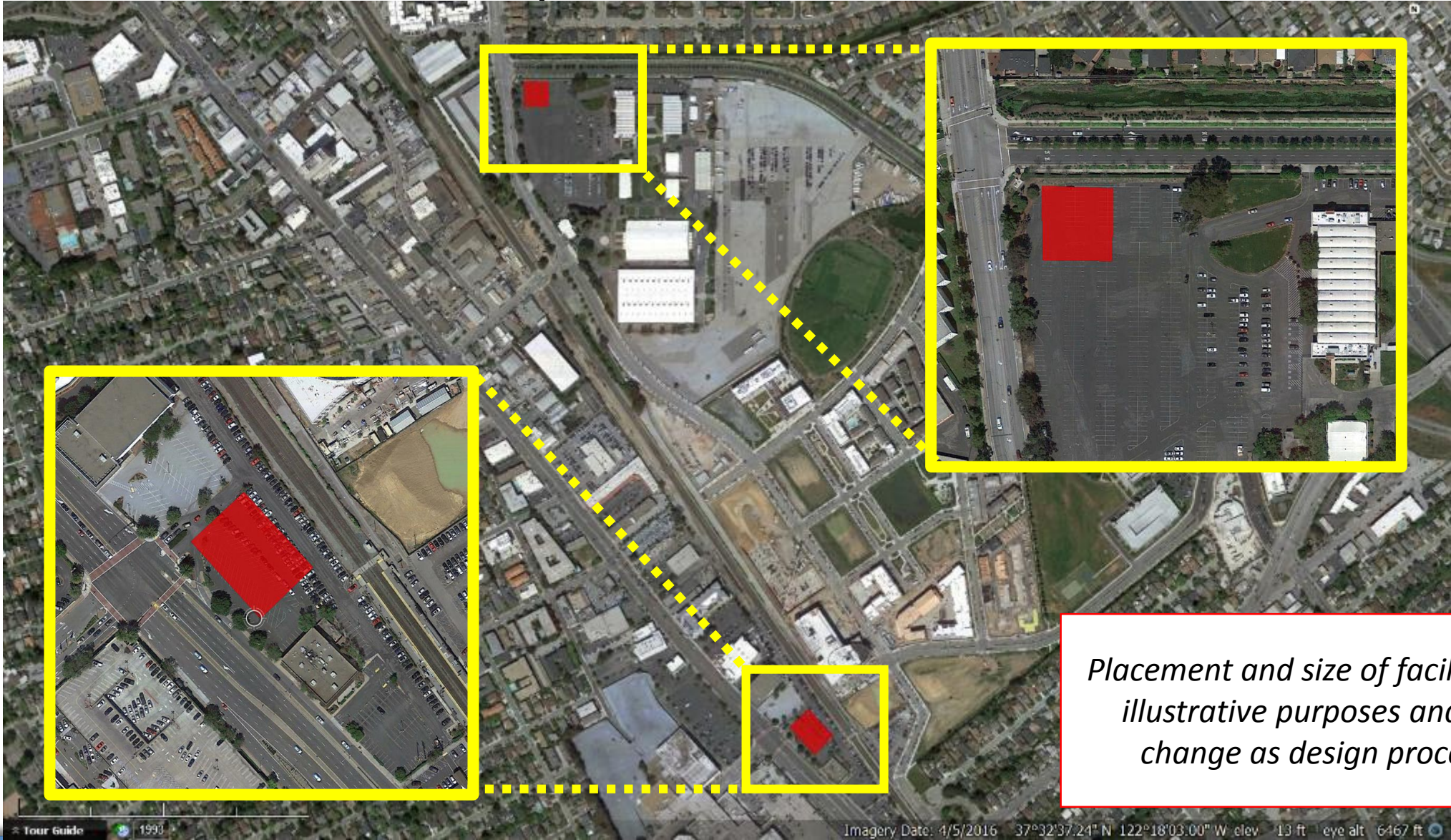
# Fiesta Meadows Park

*Placement and size of facility is for illustrative purposes and may change as design proceeds*





# Hillsdale Plaza/Expo Center

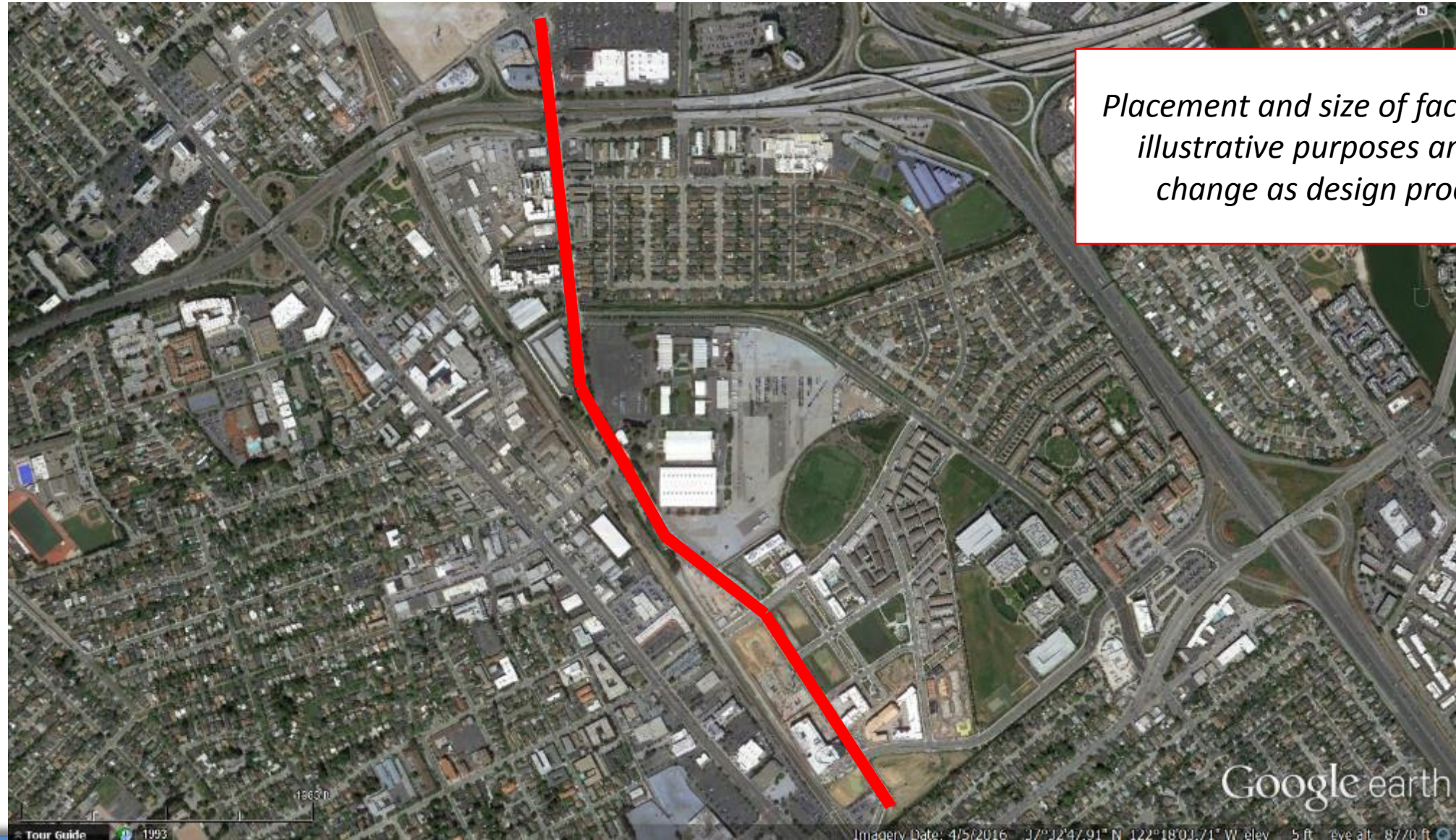


*Placement and size of facility is for illustrative purposes and may change as design proceeds*





# Delaware Street Tunnel



*Placement and size of facility is for illustrative purposes and may change as design proceeds*



Google earth

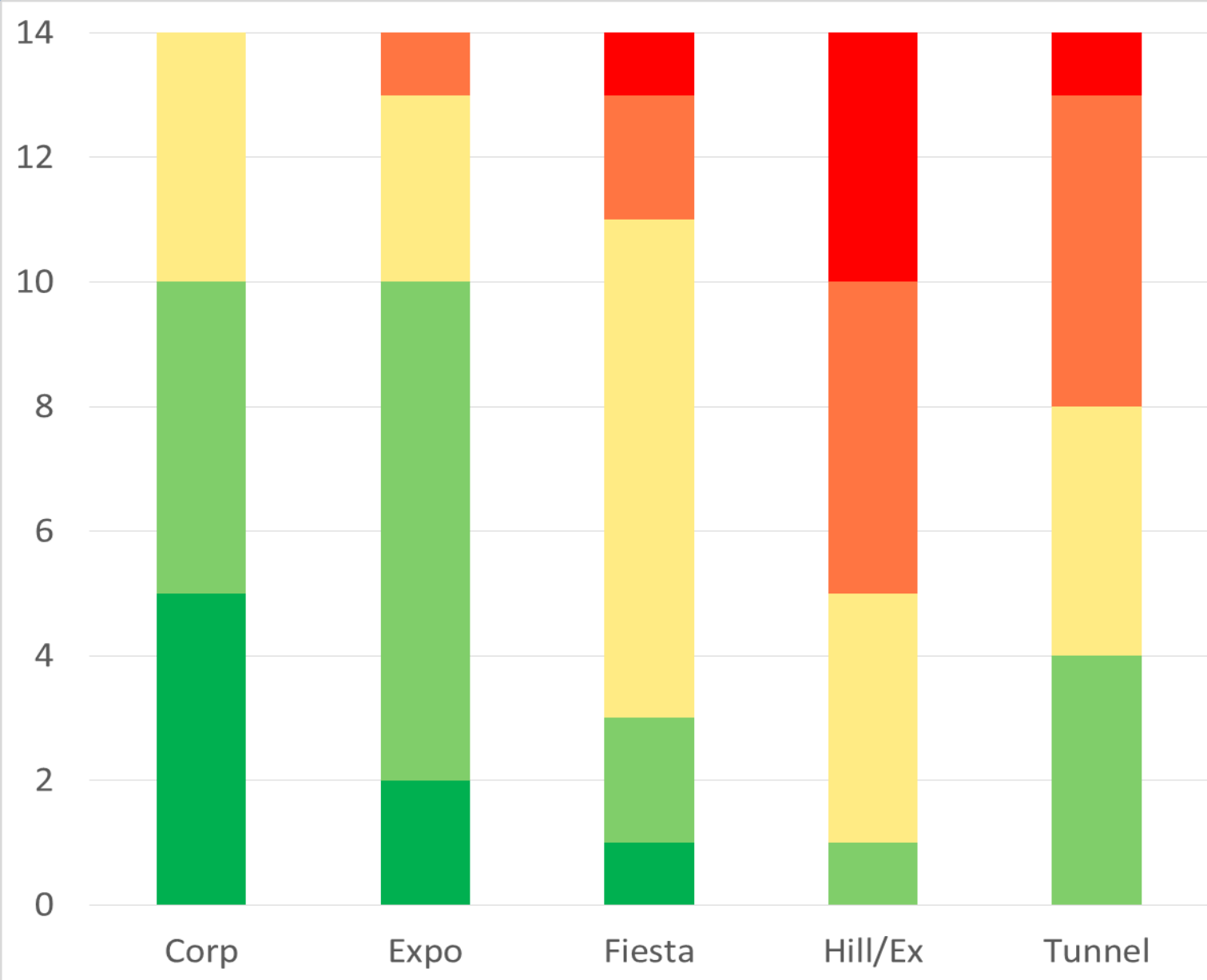


# Summary of Results

Non-Monetary and Costs







## Distribution of Criteria Results



**Potential Fatal Flaw**  
**1**

**Below Average**  
**2**

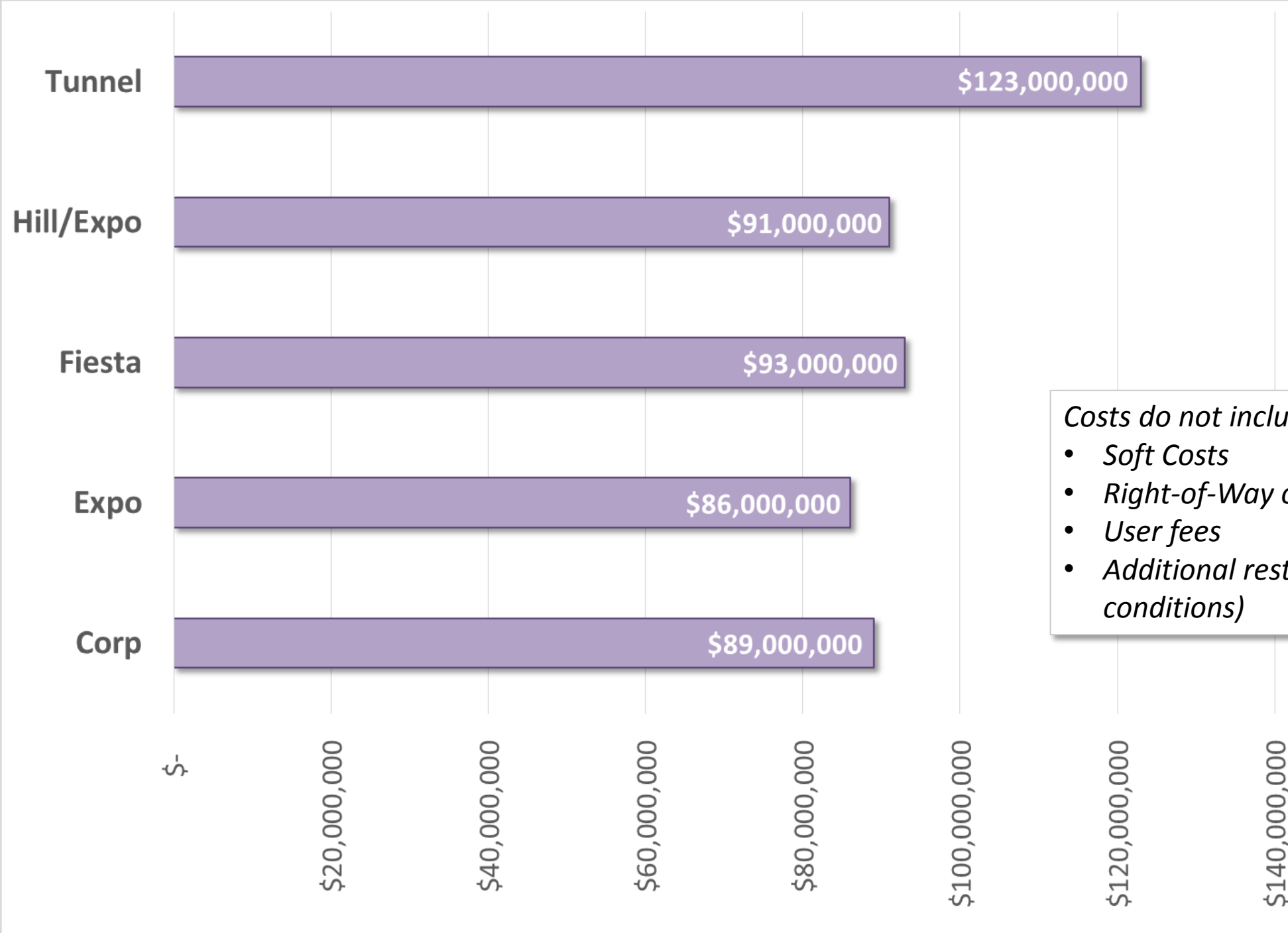
**Neutral/Average**  
**3**

**Above Average**  
**4**

**Advantageous**  
**5**



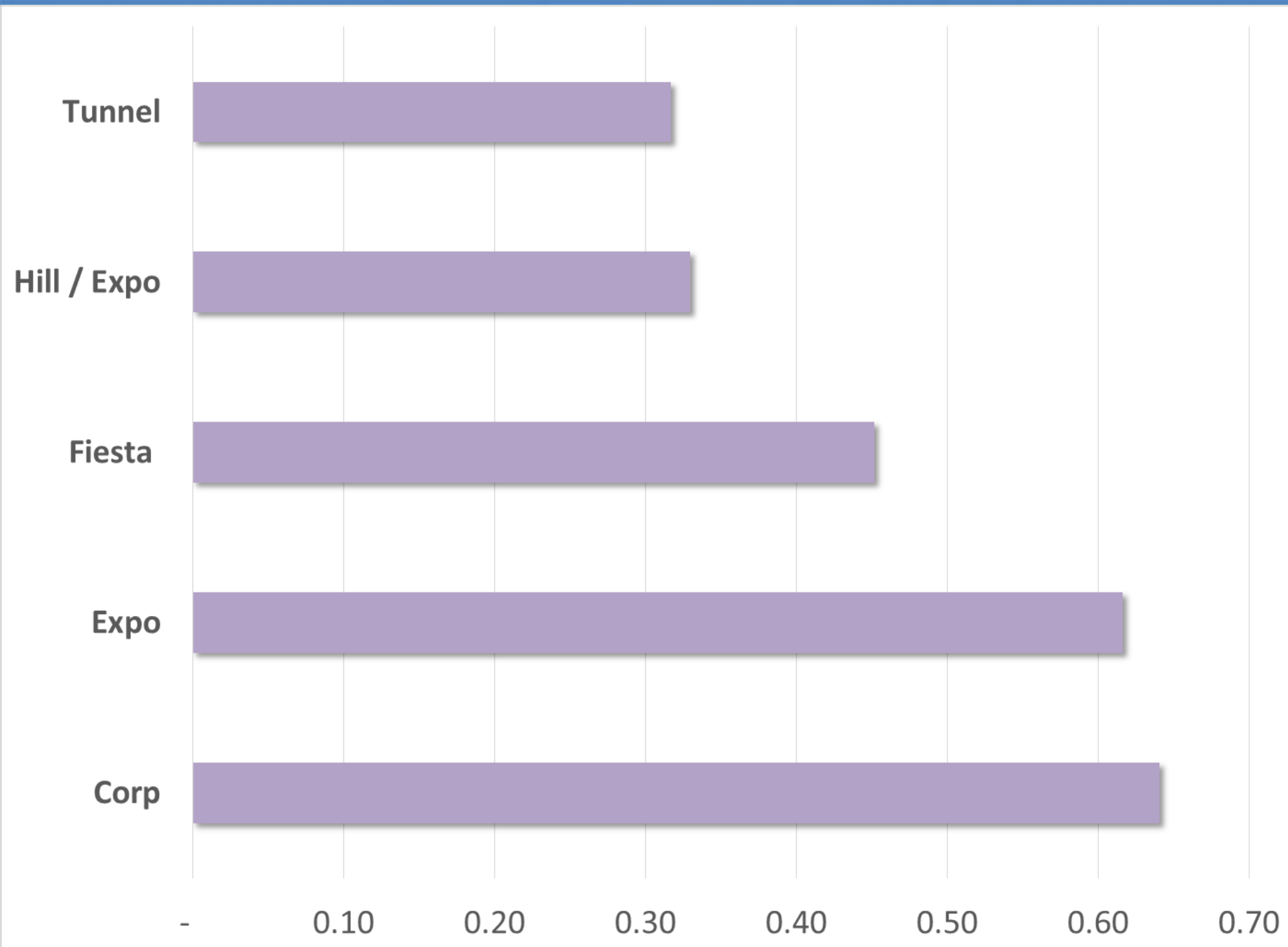
# Life Cycle Costs



*Costs do not include:*

- *Soft Costs*
- *Right-of-Way or easement costs*
- *User fees*
- *Additional restoration (beyond existing conditions)*

## Benefit/Cost



# Commissioner Questions



# Requested Public Works Commission Action

Staff requests that the Public Works Commission identify their preferences for up to two alternatives for additional analysis on potential impacts.





[www.cleanwaterprogramsanmateo.org](http://www.cleanwaterprogramsanmateo.org)