



# **Public Works Commission Meeting Underground Storage Facility Additional Site Evaluations**

**Wednesday, June 14, 2017**

## Tonight's Presentation

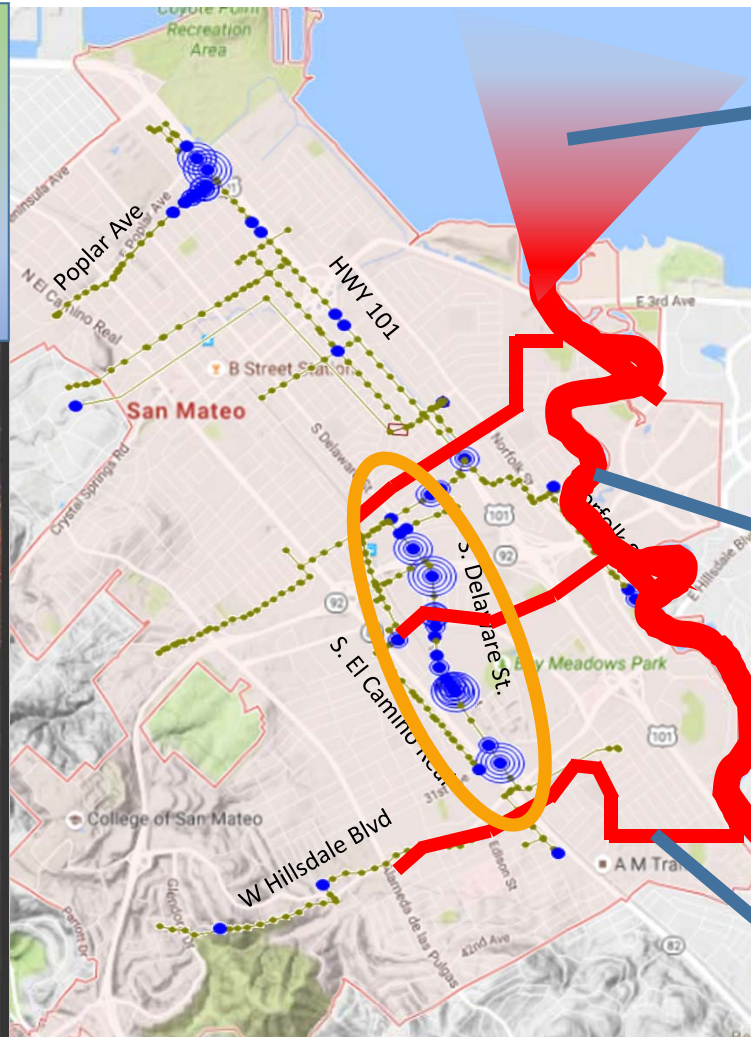
- Background and History
- Site Evaluations
- Comparison Summary
- Staff Recommendation
- PW Commission Questions and Requested Action
- Next Steps



# Sewer Overflow Impacts & Regulatory Violations

## What Causes Sewer Overflows?

*Raw Sewage, PLUS  
Unintended Rain Water  
Entering the System*



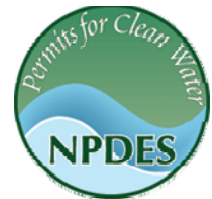
**SF BAY**

**LAGOON  
& BEACHES**

**CREEKS**



CALIFORNIA  
**Water Boards**  
STATE WATER RESOURCES CONTROL BOARD  
REGIONAL WATER QUALITY CONTROL BOARDS






# CWP Drivers, Goals, & Comprehensive Approach



**Replace** aging infrastructure and facilities



**Build** wet weather sewer system capacity assurance to prevent overflows



**Meet** current and future regulatory requirements



**Align** with the City of San Mateo and Foster City's sustainability goals

## WWTP

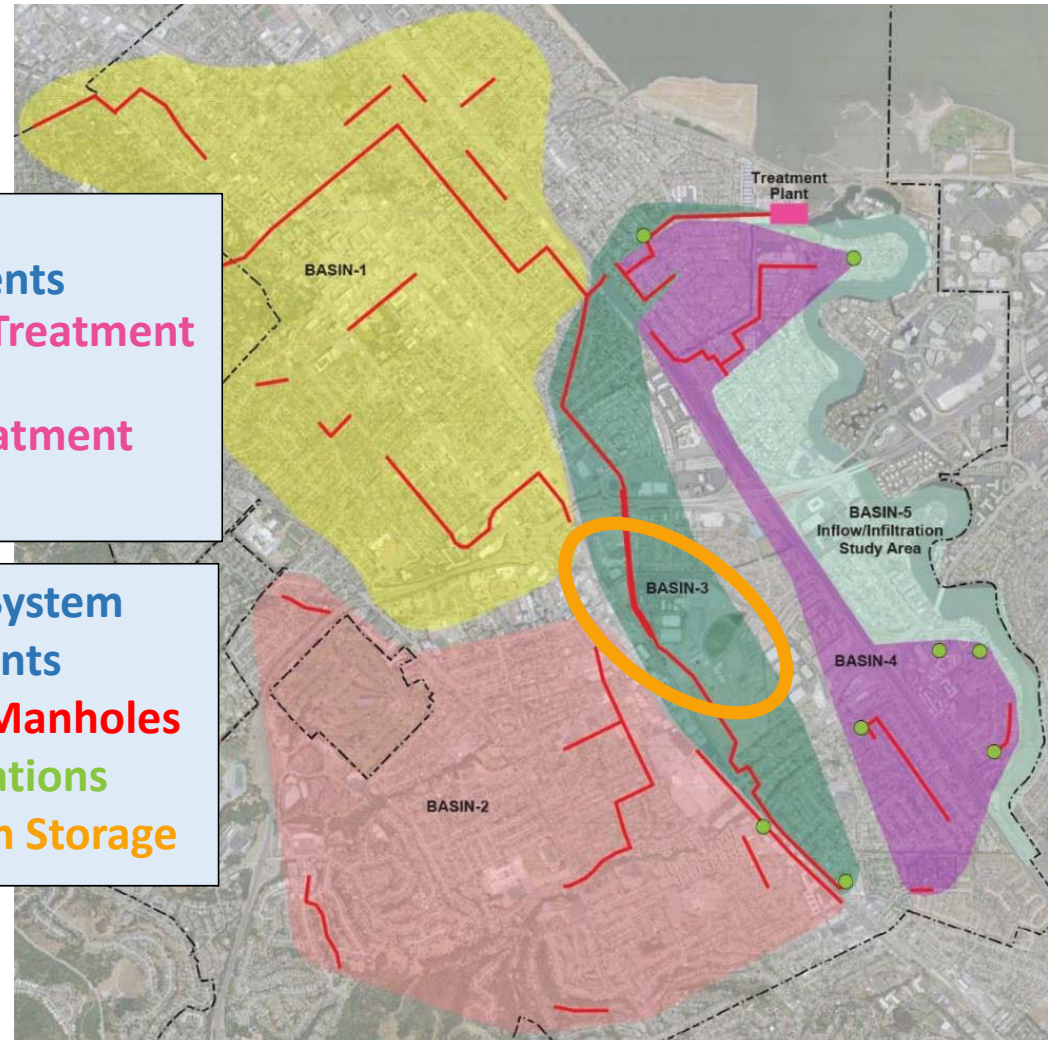
### Improvements

- Existing Treatment Facilities
- New Treatment Facilities

## Collection System

### Improvements

- Pipes & Manholes
- Pump Stations
- In-System Storage



# Storage Site Evaluation Criteria & Selection Process

## PEIR Full List

Space  
55 Sites

## PEIR Short List

Beneficial Impacts  
12 Sites

## Design Team

Technical  
5 Sites

## Public Input + Design Team +

### PWC + CC

Alternatives Analysis

2 Sites

Corporation Yard  
SMC Event Center

PW Commission June 14  
City Council July 17

## Public Input + Design Team

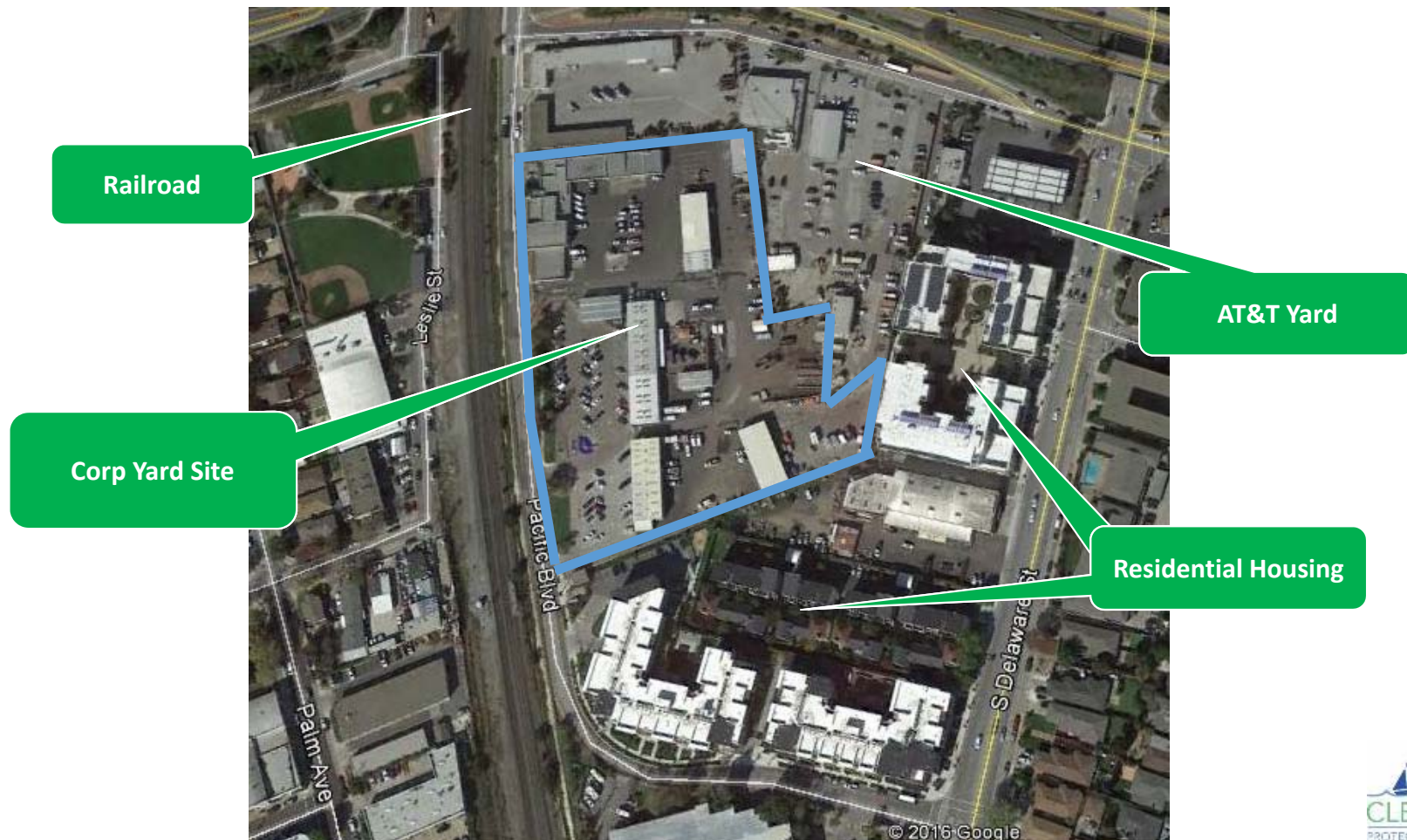
### + PWC + CC

Further Evaluation

**Final Site Selection**



# Corp Yard – Background Information





# Corp Yard – Conceptual Storage Layout Options



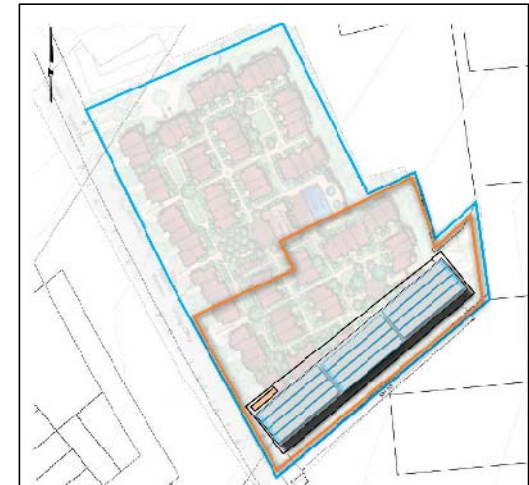
**North Option**  
**NOT FEASIBLE**



**South Option**  
**FEASIBLE**



**Pacific Option**  
**NOT FEASIBLE**



**South/Housing  
Option**  
**FEASIBLE**



Corp. Yard

In-System Storage Tank

Pacific Blvd.

Diversion Sewer

El Camino Real

Delaware St.

Existing 24" Sewer

## CORP YARD DIVERSION SEWER SCHEMATIC ALIGNMENT







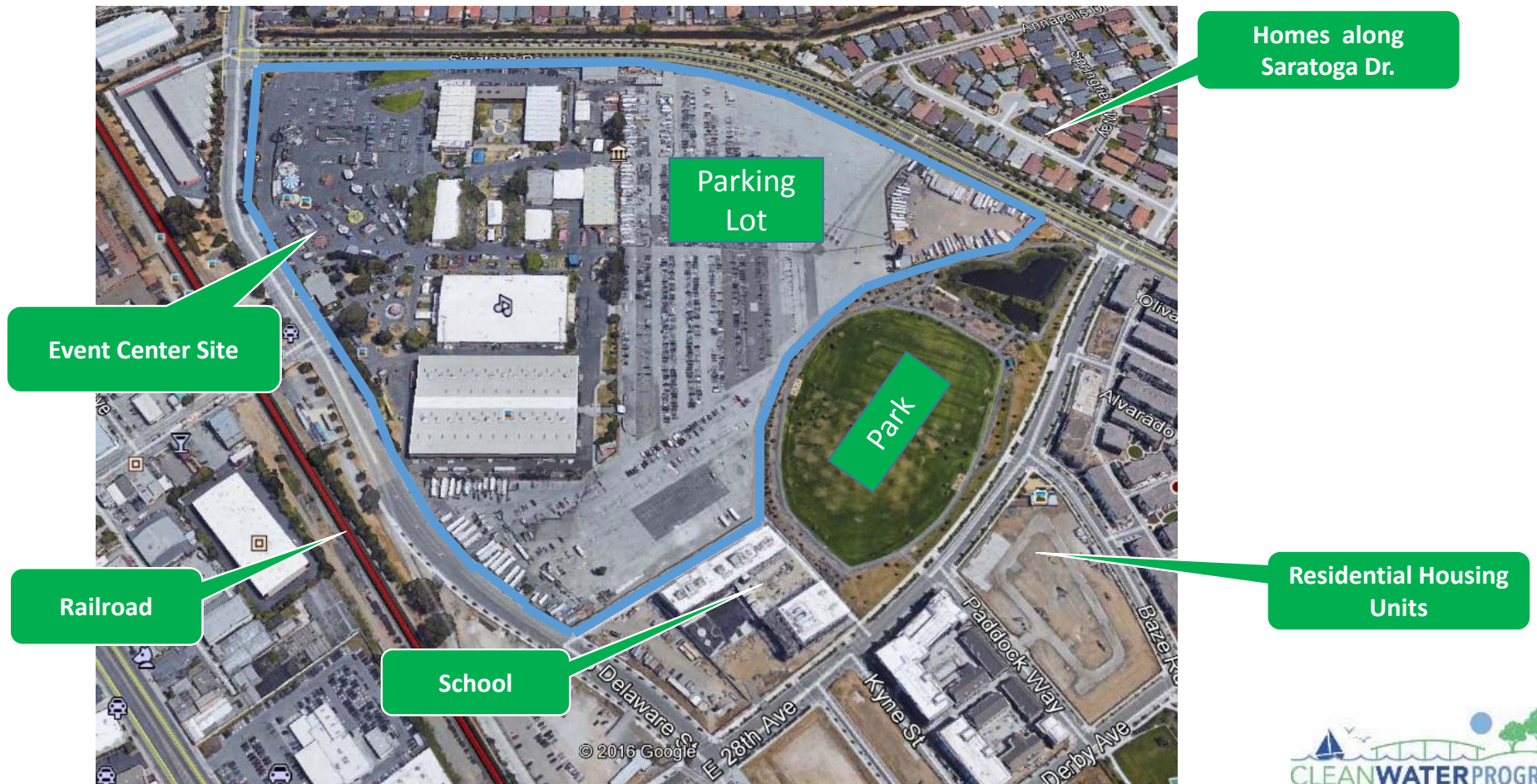
Construction Limits

CORP YARD  
CONCEPTUAL  
CONSTRUCTION LAYOUT  
(SOUTH OPTION SHOWN)





# Event Center – Background Information

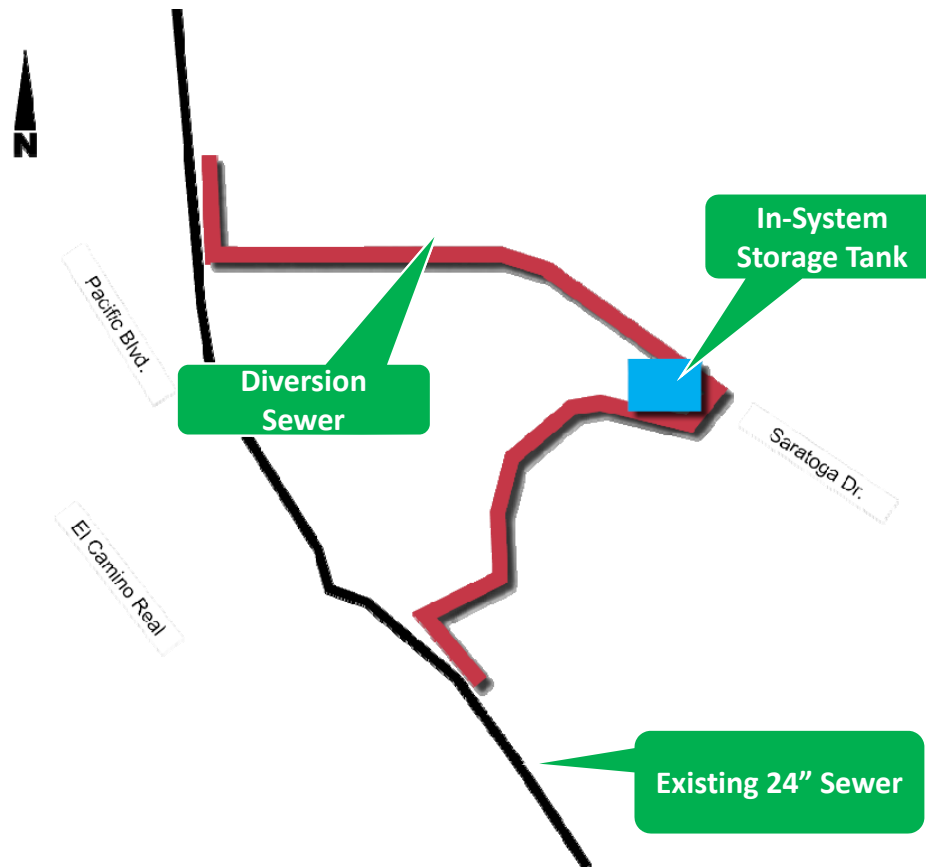




# Event Center – Conceptual Storage Layout Options







## EVENT CENTER DIVERSION SEWER SCHEMATIC ALIGNMENT



# EVENT CENTER CONCEPTUAL CONSTRUCTION LAYOUT (EAST OPTION)



# Event Center Option Agreement for Purchase of Easements



**Easement Legend**  
 Temporary Construction  
 Permanent

**CLEAN WATER PROGRAM**  
PROTECTING THE BAY FOR A SUSTAINABLE FUTURE



# Evaluation of Potential Impacts

## Corp Yard South and Event Center East Comparisons

Based on resources from CEQA Initial Study Checklist/Final PEIR

- Air Quality\*
- Hazards and Hazardous Materials\*
- Aesthetics
- Noise & Vibration
- Land Use
- Transportation/Traffic

\*Both sites have similar impacts



15

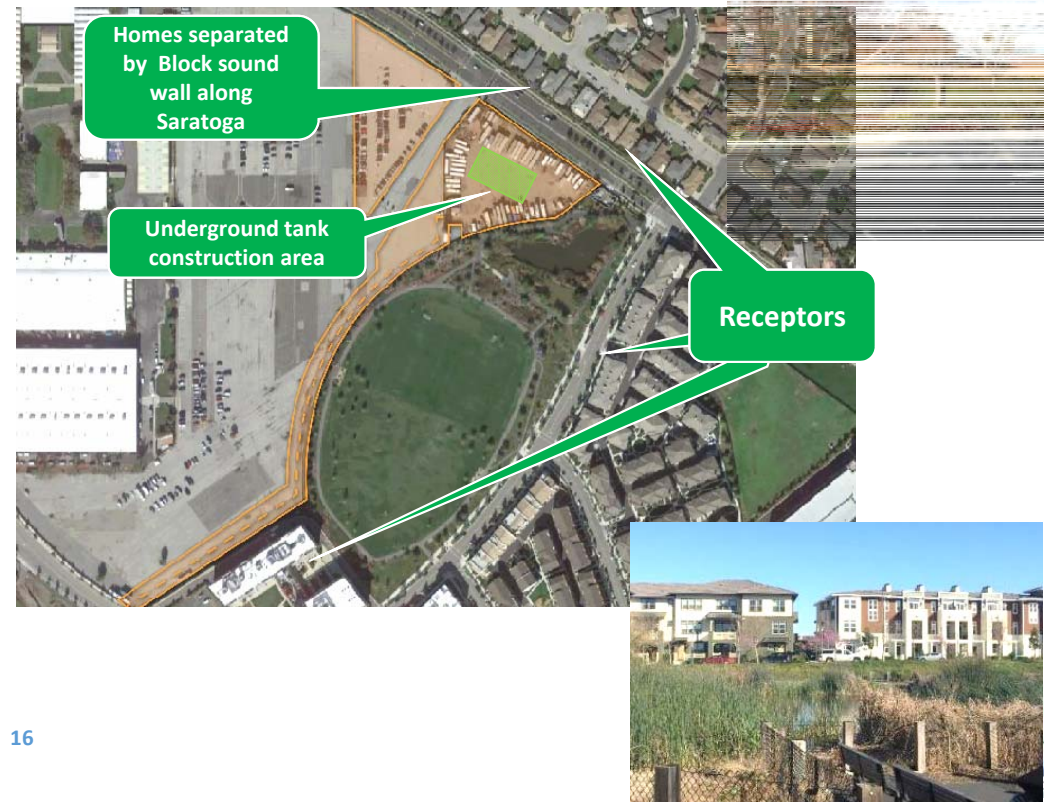


# Evaluation of Potential Impacts – Aesthetics, Noise and Vibration

## Corporation Yard - South



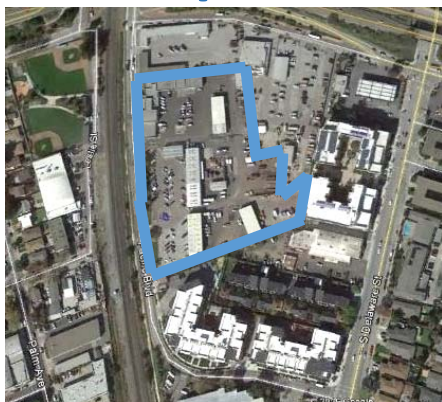
## Event Center - East





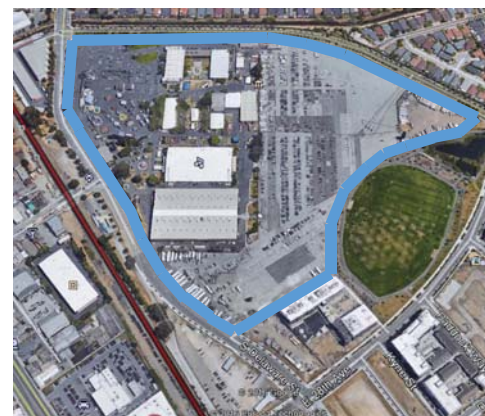
# Evaluation of Potential Impacts - Land Use and Planning

**Corp Yard**



**Zoning: Transit Oriented Development (TOD)**

**Event Center**



**Zoning: Agriculture**





# Evaluation of Potential Impacts – Transportation/Traffic

Alternative	Estimated Total No. Vehicle Trips	Estimated Peak Trips/Day	Estimated Avg Trips/Day
Corp Yard	49,000	60	20
Event Center	48,400	60	20



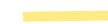
ISS SITE



EXISTING TRUCK  
ACCESS ROUTES



CORP YARD – CONCEPTUAL  
TRUCK ACCESS ROUTES



EVENT CENTER - CONCEPTUAL  
TRUCK ACCESS ROUTES



# Construction Schedule Comparisons

## Corp Yard

Project Completion – 66 – 99 mo

Design and Permitting

18 – 36 mo

Relocation of  
City Operations

12 – 18 mo

Construction

27 – 30 mo

Return of  
City Ops to Corp  
Yard Site

12 - 18 mo

## Event Center

Project Completion – 45 – 48 mo

Design and Permitting

18 mo

Construction

27 – 30 mo



## Cost Comparisons

Site	ISS Construction Cost	ROW User Fees and Purchase	Additional Site Restoration Costs
Event Center	\$53 - \$75 M	\$11 M - \$14M	\$600 K - \$1M
Corporation Yard	\$53 - \$75 M	\$10 M*	\$2 M - \$6 M





# Comparison Summary of Site Alternatives

## Corp Yard



## Event Center



Comparison Categories		
+	Site Ownership, Easement & Use Fees	
	Impacts to Current Operations	+
	Aesthetics, Noise & Vibration Impacts	+
	Current Land Use & Zoning	+
	Schedule to Meet CWP Goals	+

+	Indicates More Favorable Site
---	-------------------------------



## Staff Recommendation

Staff recommends selection of the **Event Center (East)** site for the location of in-system storage.

## PW Commission Questions and Requested Action

Staff requests that the Public Works Commission identify their recommendation for the in-system storage site.



## Next Steps for In-System Storage (ISS) Selection Process and Engineering

**June 14**

PW Commission  
recommendation  
for ISS site selection

**July 19**

City Council ISS  
site selection

If Event Center site is selected, execute  
Option Agreement and begin negotiation  
of Easement Purchase Agreement

Begin detailed design and continue  
CEQA evaluations for selected site





# Methods to Stay Informed & Provide Input

## Sign Up for Email Updates

[info@cleanwaterprogramsanmateo.org](mailto:info@cleanwaterprogramsanmateo.org)

## Register for Private Neighborhood Updates

[www.NextDoor.com](http://www.NextDoor.com)

## Contact Us

[www.CleanWaterProgramSanMateo.org](http://www.CleanWaterProgramSanMateo.org)

650-727-6870





[www.cleanwaterprogramsanmateo.org](http://www.cleanwaterprogramsanmateo.org)