



Capital Improvement Projects & Proposed Sewer Rate Increases

November 2017

Community Outreach Channels - Effectiveness Polling

- Postcard Mailing
- City or Clean Water Program Website & Events Calendar
- Press Release & Articles
- Social Media
 - *Nextdoor, Facebook, Twitter*
- Email

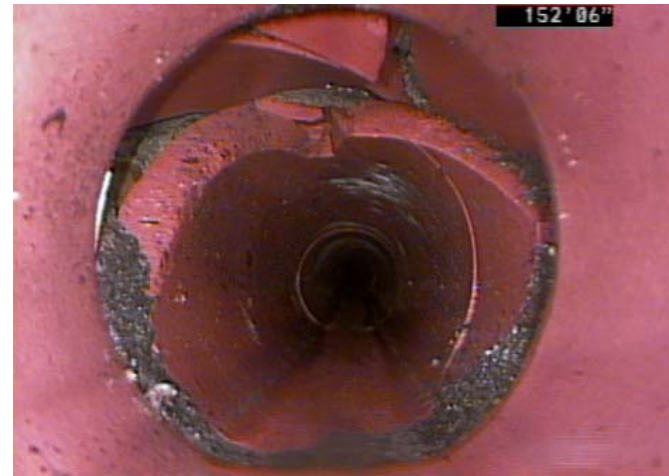


Agenda

- Welcome
- Need for Sewer Improvements
- Rate Adjustment Proposal
- Questions & Feedback
- Adjourn to Open House



Aging WWTP & Collection System Facilities



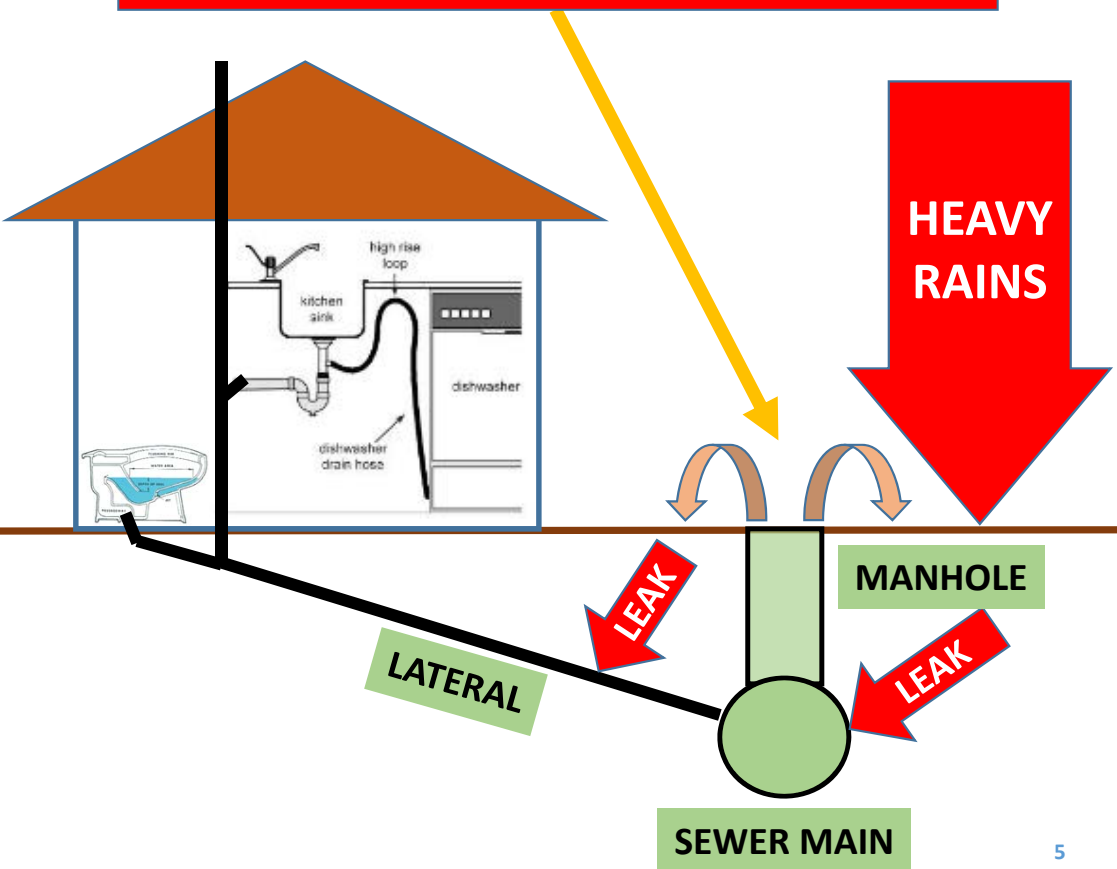
Inside of Failed & Cracked Pipe



Root Intrusion into Pipe

Peak Wet Weather Conditions & Insufficient Capacity

Sanitary Sewer Overflow (SSO)

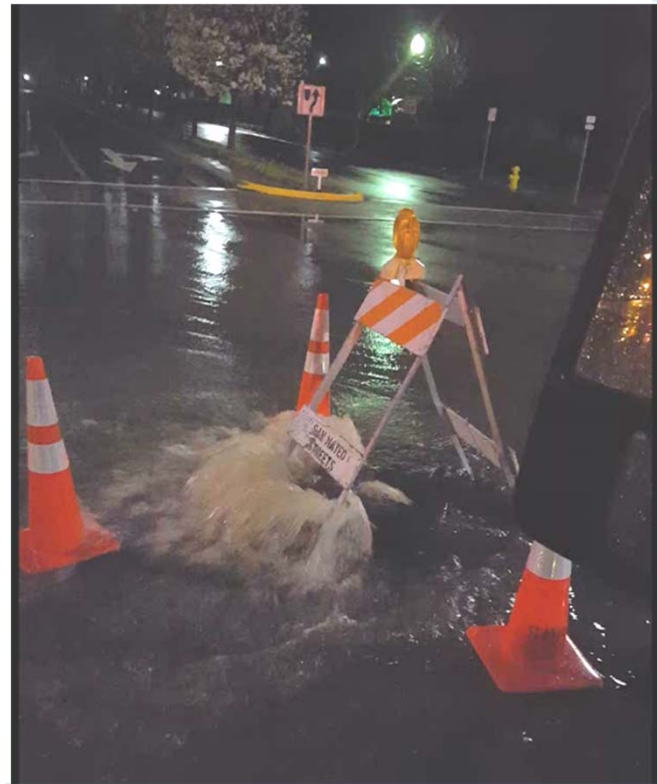


What Causes Sewer Overflows?

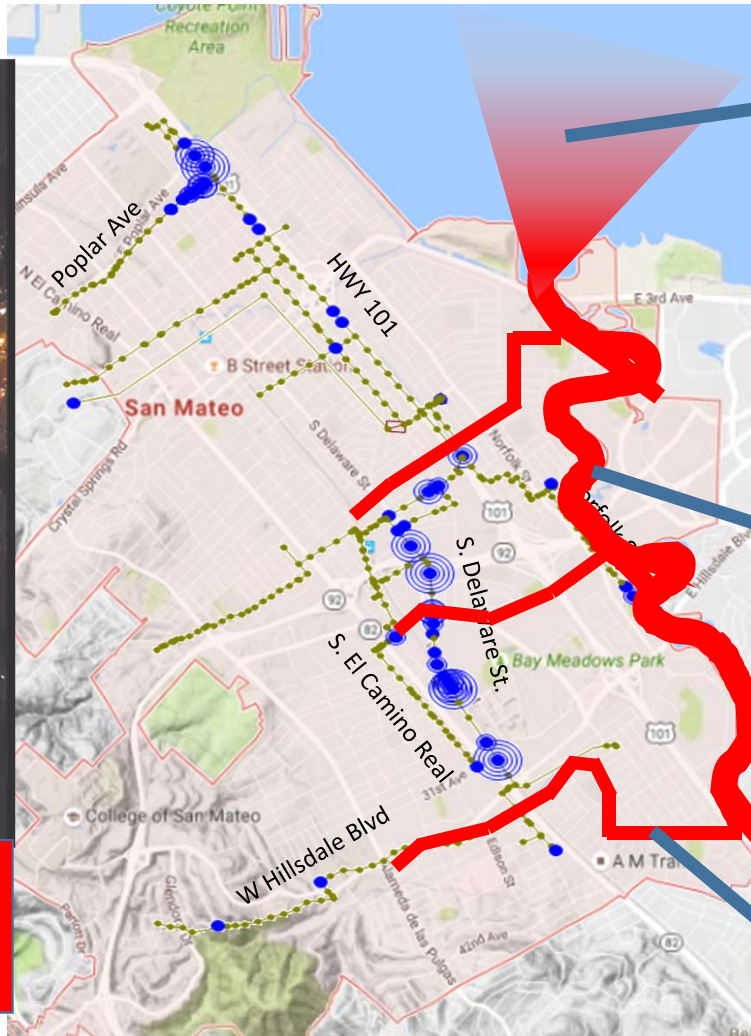
*System w/ Capacity Constraints;
Sewage, PLUS unintended
Rain Water Entering the System*



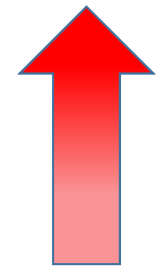
Sewer Overflow Impacts & Regulatory Violations



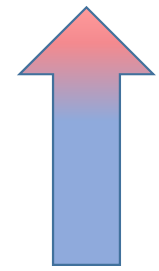
Sanitary Sewer Overflow (SSO)



SF BAY



LAGOON & BEACHES



CREEKS

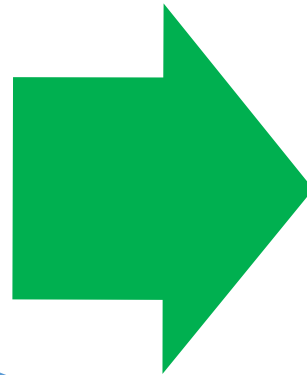


Comprehensive Approach

Inflow/Infiltration
(I/I) Reduction &
System Rehabilitation



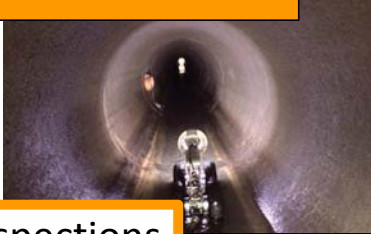
Capacity & Flow
Management
Improvements



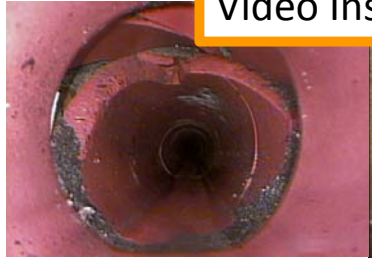
Clean Water Program
Comprehensive
Approach

I/I Reduction and System Rehabilitation

Pipe Condition Assessments



Video Inspections



Pipe Repair & Rehabilitation



Pipe Replacement



Pipe Spot Repairs



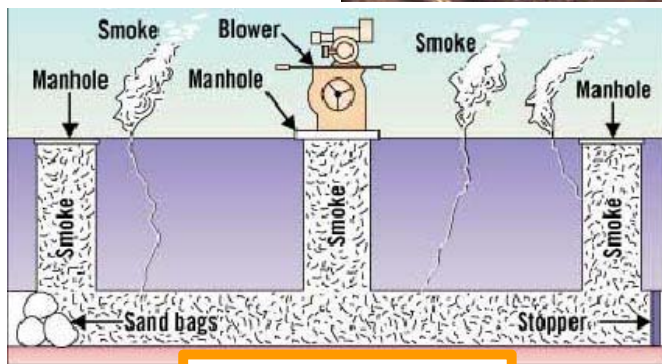
Pipe Lining

Root Foaming



Fat, Oils, Grease Reduction

Private Sewer Lateral Replacement Program

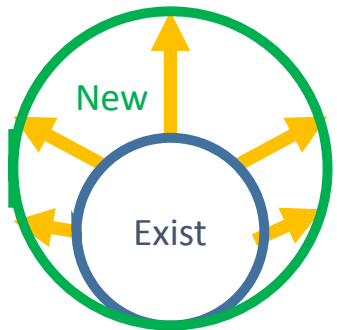


Smoke Testing

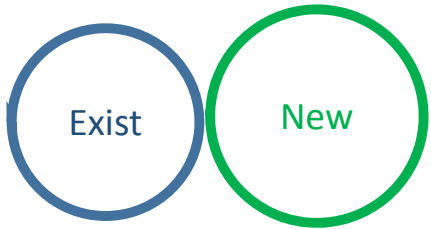
Consideration of Point of Sale Lateral Ordinance

Capacity & Flow Management Improvements

Pipe Improvements



Increase Pipe Diameter

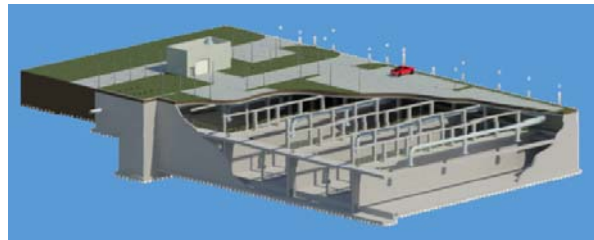


New Parallel "Relief" Pipe

Optimize Pump Stations



Underground In-System Storage Facility



Air Tight Vaults



Self Cleaning Tipping Buckets

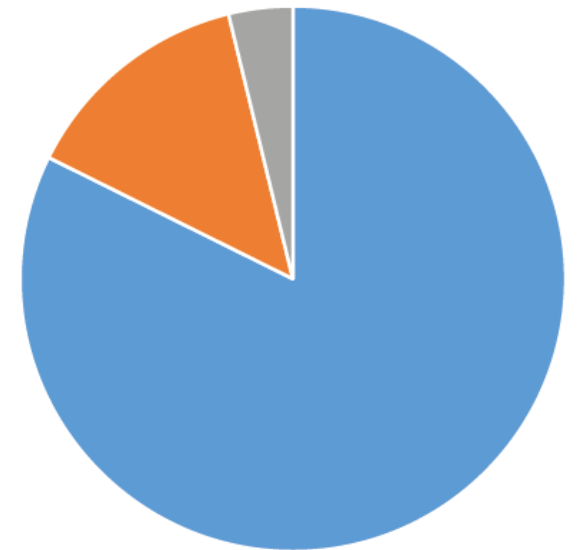
Wastewater Treatment Plant Upgrade



CLEANWATERPROGRAM
PROTECTING THE BAY FOR A SUSTAINABLE FUTURE



Funding from Sewer Use Bills

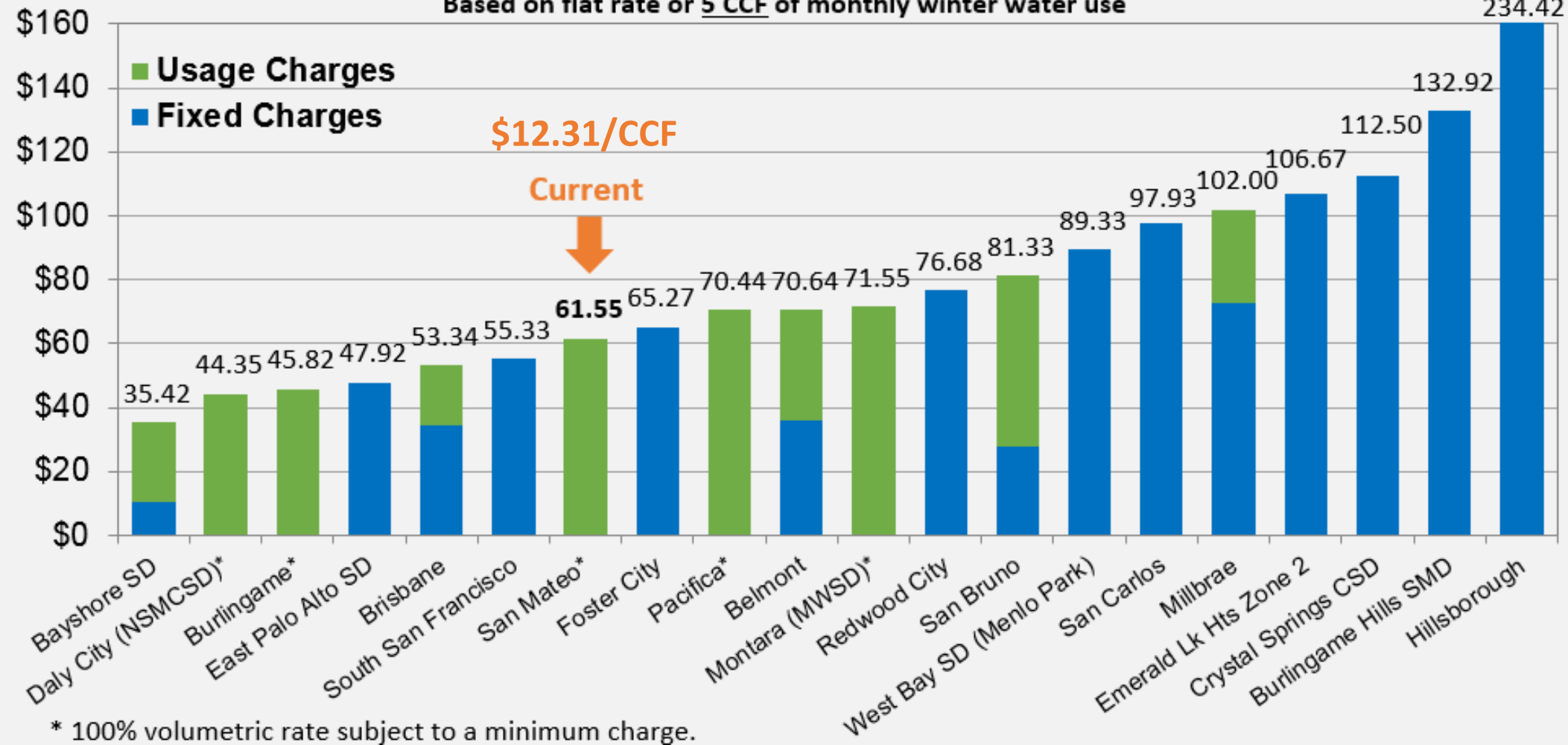


- San Mateo
- Foster City
- Other Partners

San Mateo County Survey

Single Family Residential Monthly Sewer Bills 2017/18

Based on flat rate or 5 CCF of monthly winter water use



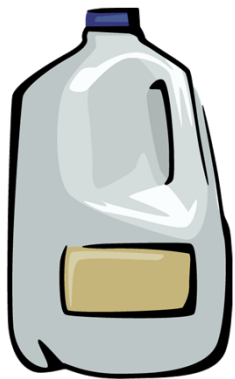
* 100% volumetric rate subject to a minimum charge.

What is a CCF?

1 CCF = 100 cubic feet

100 cubic feet = 748 gallons

Average 5.0 CCF = 3,740 gallons



1 Gallon

FY 17/18 Rate & Conversion

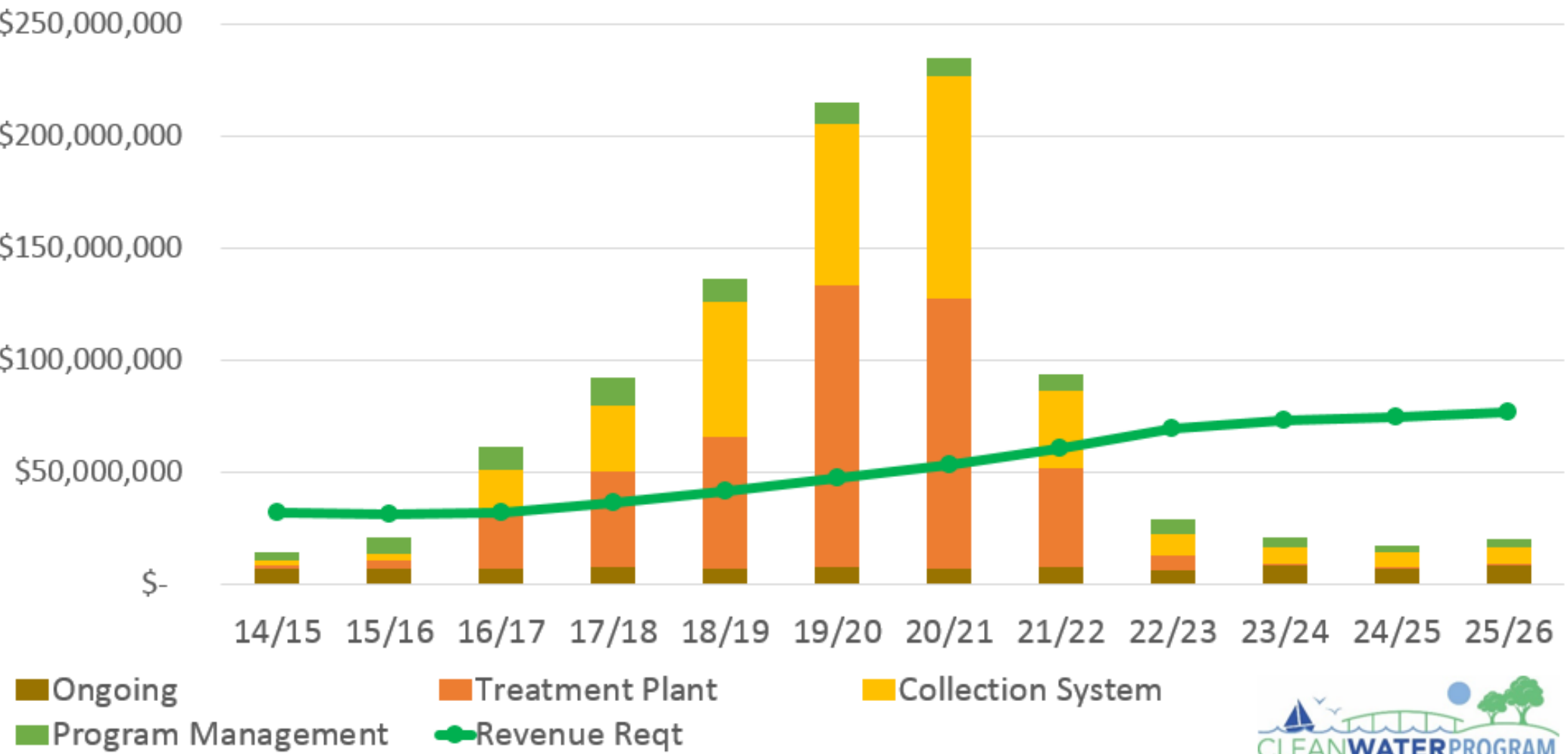
\$12.31 / CCF

= \$0.01646 per Gallon



748
Gallons

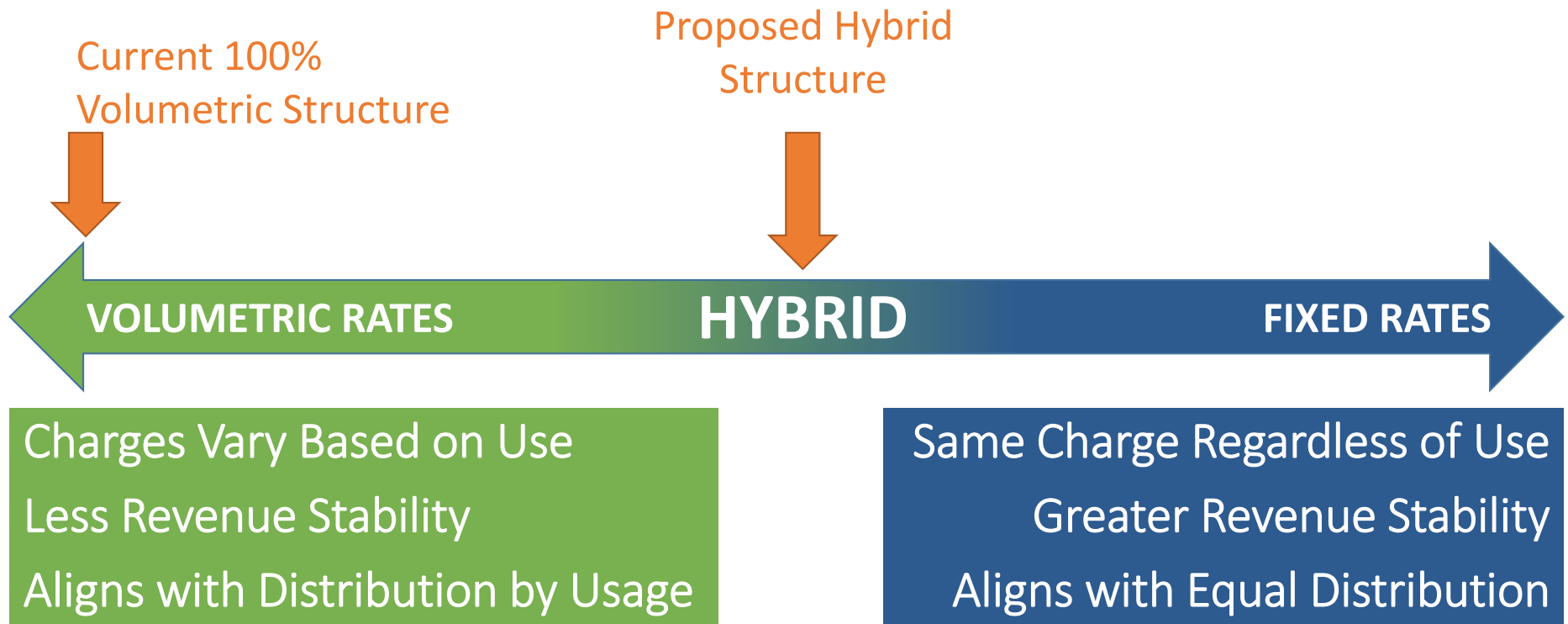
Estimated Program Expenditures



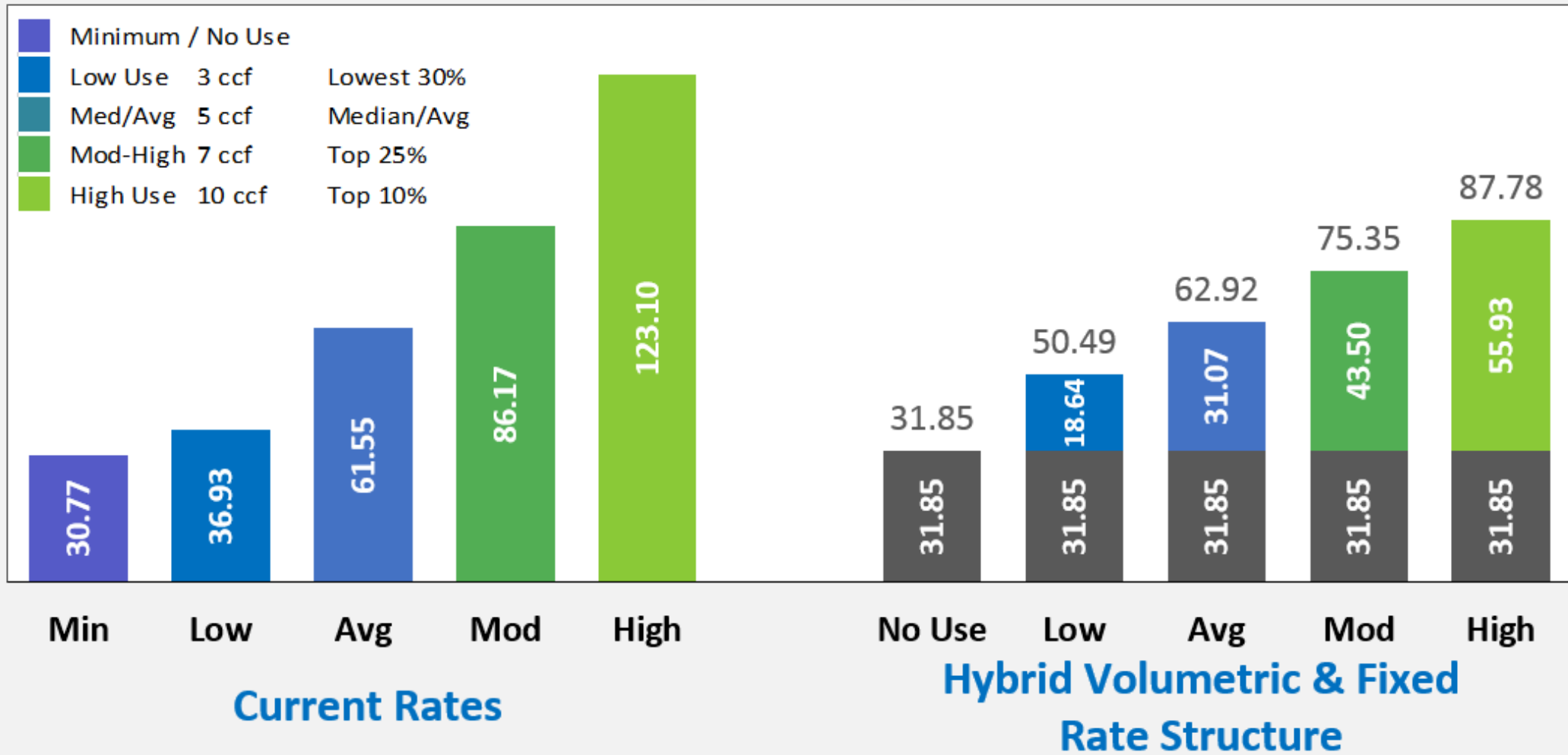
Rate Restructure & Multi-Year Rate Increase Previous 2017 Outreach Efforts



Hybrid Residential Rate Restructure



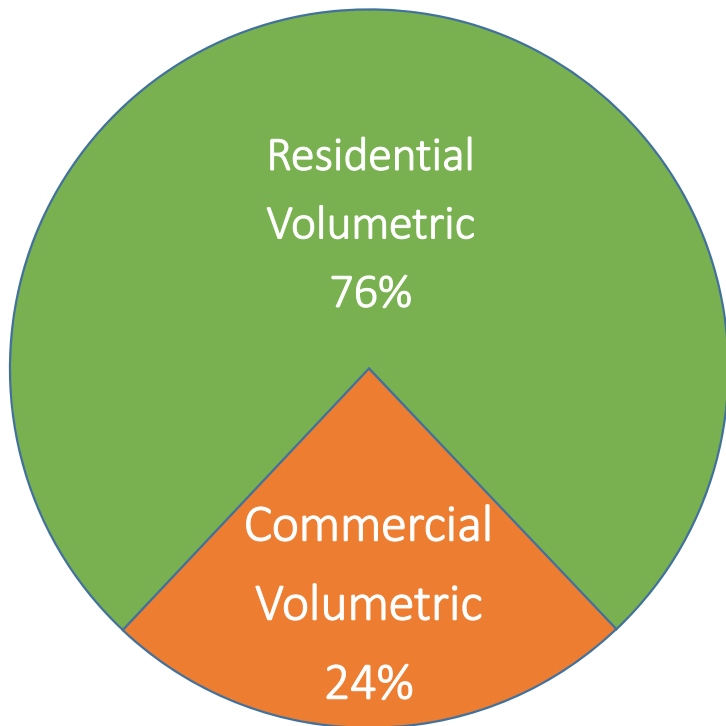
Example Rate Structure Comparison of Monthly Residential Sewer Service Charges Using FY 2017-18 Rates



Hybrid Rate Structure Revenue Recovery

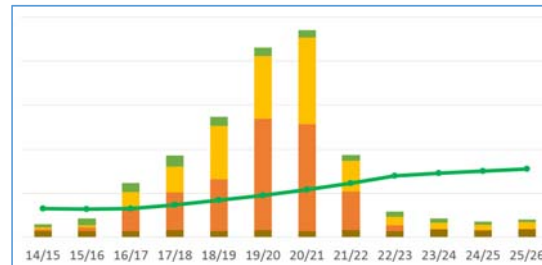
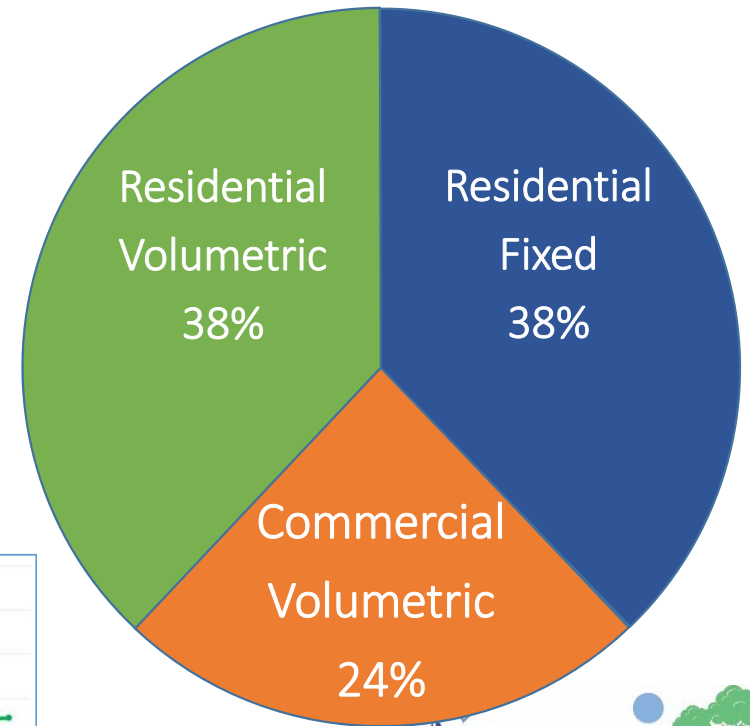
Current Rate Structure

% of Total Sewer Rate Revenues



Hybrid Rate Structure

% of Total Sewer Rate Revenues



Example Residential Sewer Charge Calculation Using Proposed FY 2018-19 Rates

Example for typical residential dwelling unit with 5 CCF average winter water use:

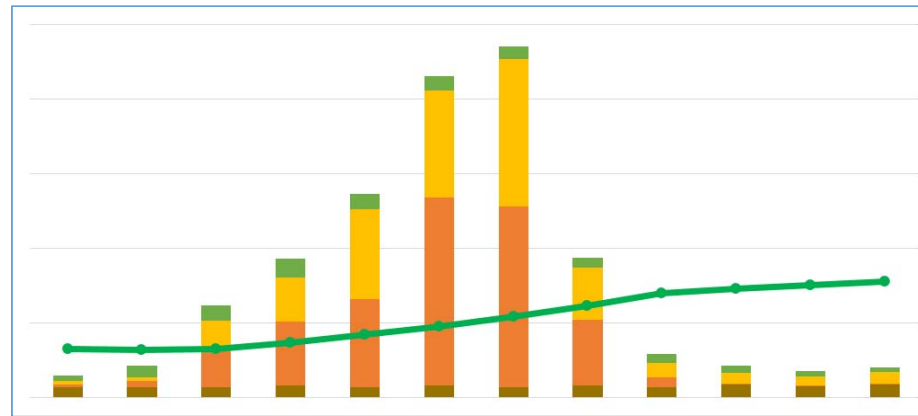
Winter Water Use (CCF)	Nov	Dec	Jan	Feb	Mar	Average
	5	6	4	4	6	5.0

Example charge calculation using usage data from above table:

Fixed Monthly Charge	Volumetric Usage Charge	Total Monthly Charge
\$36.59	$(\text{Rate}) \times (\text{Usage}) = \text{Charge}$ $\$7.15 \times 5.0 \text{ CCF} = \35.75	$\text{Fixed Charge} + \text{Usage Charge} = \text{Total}$ $\$36.59 + \$35.75 = \$72.34$

Multi-Year Rate Increases

- Phase rate impacts over multiple years
- Plan ahead to ensure sufficient revenue (green line) to repay debt
- Needed for borrowing money (both bonding and SRF loans)



Residential Sewer Rates

Proposed 5-Year Rates for FY 2018-2019 to FY 2022-2023

RESIDENTIAL RATE CHARGE TYPES	Current 2017-18 Rates	Effective July 1 st of Each Year				
		Year 1 2018-19	Year 2 2019-20	Year 3 2020-21	Year 4 2021-22	Year 5 2022-23
Fixed Monthly Charge <i>per dwelling unit</i>	n/a	\$36.59	\$41.80	\$47.34	\$53.59	\$60.14
Volumetric Usage Charge Rate* <i>Class A – Residential</i>	\$12.31	\$7.15	\$8.18	\$9.27	\$10.51	\$11.80

*Rate per hundred cubic feet (\$/CCF) of annualized average monthly winter water use

Commercial Sewer Rates

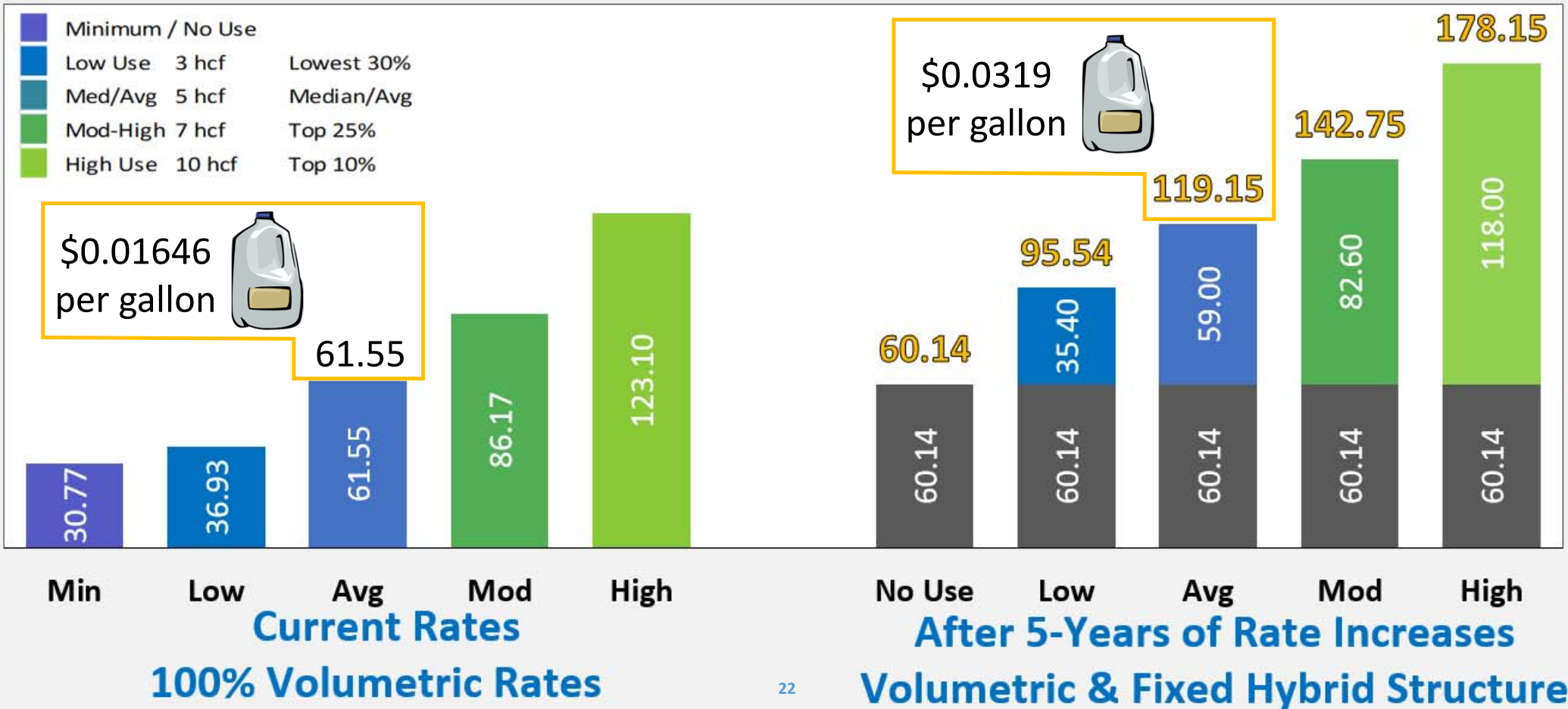
Proposed 5-Year Rates for FY 2018-2019 to FY 2022-2023

COMMERCIAL RATE CLASSIFICATIONS & CHARGE TYPES	Current 2017-18 Rates	Effective July 1 st of Each Year				
		Year 1 2018-19	Year 2 2019-20	Year 3 2020-21	Year 4 2021-22	Year 5 2022-23
<u>Volumetric Usage Charge Rate*</u>						
Class B - Standard Strength	\$12.31	\$14.19	\$16.26	\$18.47	\$20.97	\$23.60
Class C - Moderate Strength	18.20	20.48	22.92	25.43	28.20	31.00
Class D - High Strength	27.57	30.35	33.22	36.04	39.09	42.04
Class E - A limited number of accounts are billed on a case-by-case basis based on sewer rates in effect.						
Minimum Monthly Charge	\$30.77	\$36.59	\$41.80	\$47.34	\$53.59	\$60.14
Commercial bills are subject to the minimum monthly charge.						

**per hundred cubic feet (\$/CCF) of annualized average monthly winter water use*

Hybrid Rate Structure with 5-Year Proposed Increases

Monthly Residential Sewer Service Charges

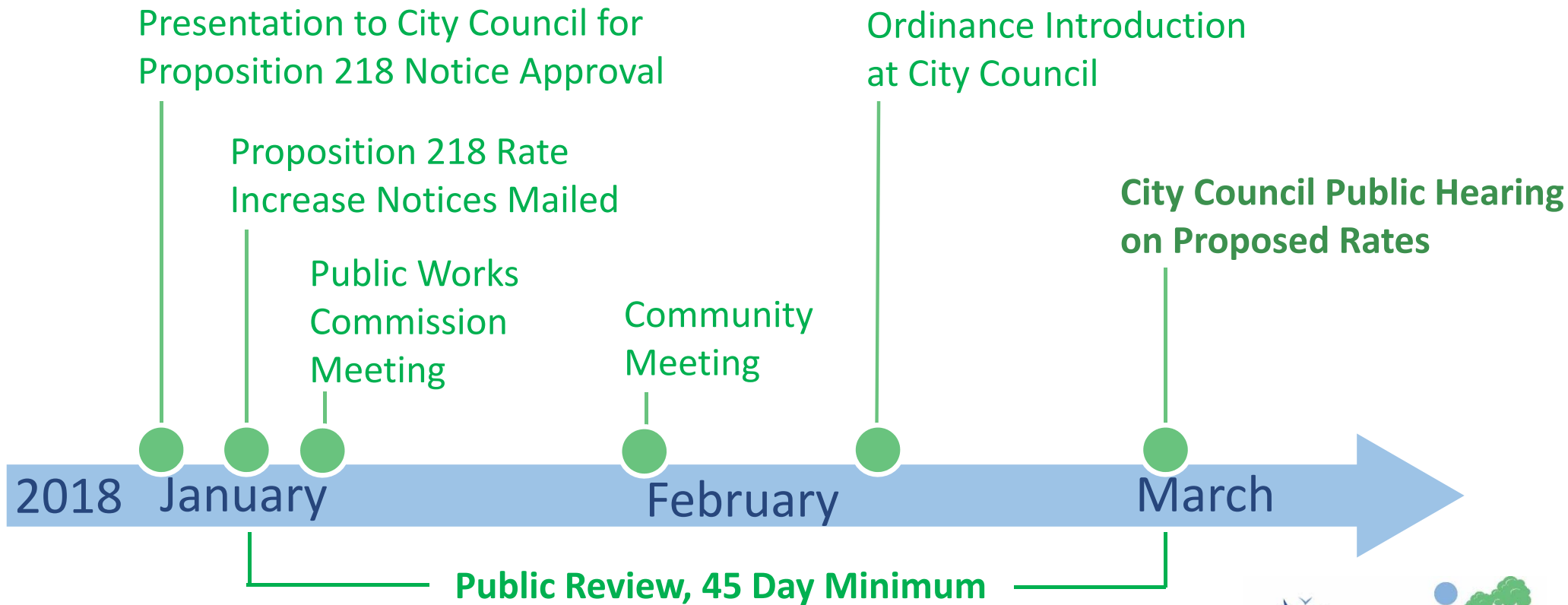


What Happens if We Don't Construct Improvements?



- Reduced reliability of wastewater system
- Continued environmental and community health risks due to Sanitary Sewer Overflows
- Violate regulations, causing possible fines
- Deferred cost = increased cost

Next Steps for Proposed Rate Restructure and Increase



Methods to Stay Informed & Provide Input

Sign Up for Email Updates

info@cleanwaterprogramsanmateo.org

Register for Private Neighborhood Updates

www.NextDoor.com

Contact Us

www.CleanWaterProgramSanMateo.org

650-727-6870



Questions & Feedback



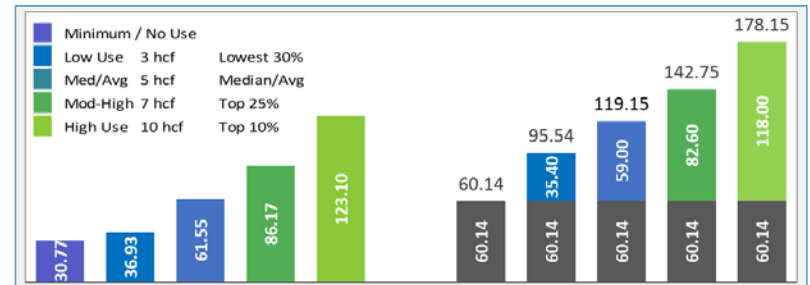
www.cleanwaterprogramsanteo.org

Open House Stations for Additional Information

General Information



Sewer Rates



Collection System



Wastewater Treatment Plant

