



Wastewater Treatment Plant (WWTP) Upgrade and Expansion Project

Neighborhood Meeting
August 21, 2018

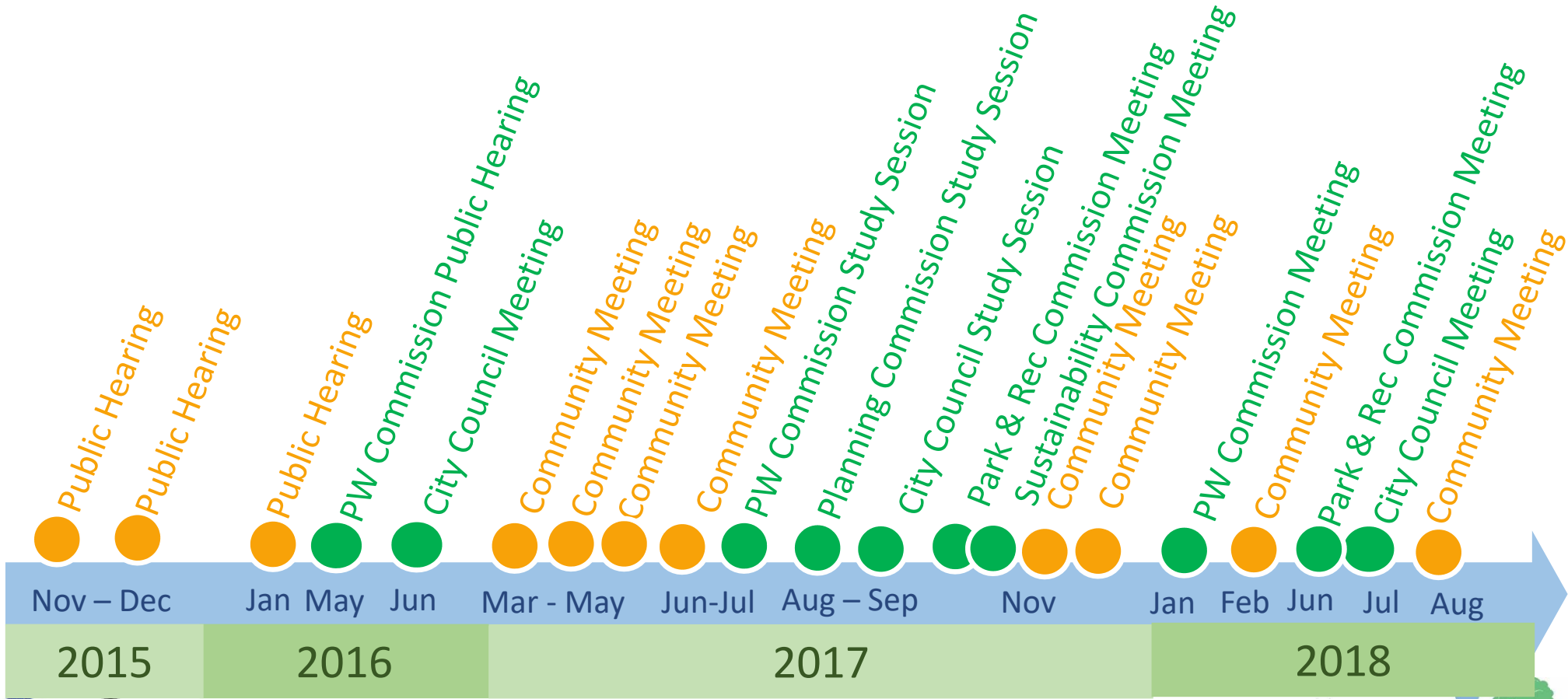


Agenda

- Overview of Clean Water Program
- WWTP Upgrade and Expansion Project Update
 - *Upcoming Construction*
 - Construction Phase 1: Site Preparation
 - *Future Construction*
 - Construction Phase 2: Build the Foundation
 - Construction Phase 3: Build the WWTP Facilities
- Q&A Session



Outreach Activities



Community Outreach Channels - Effectiveness Polling

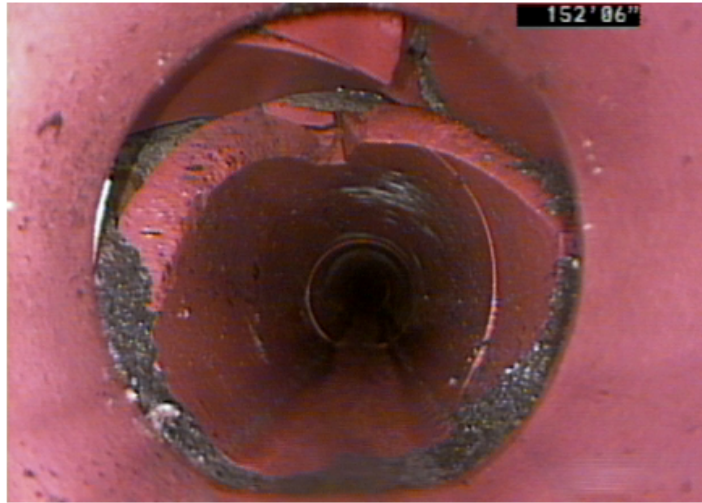
- Postcard Mailing
- City or Clean Water Program Website & Events Calendar
- Press Release & Articles
- Social Media
 - *Nextdoor, Facebook, Twitter*
- Email or E-Newsletter



Overview of Clean Water Program

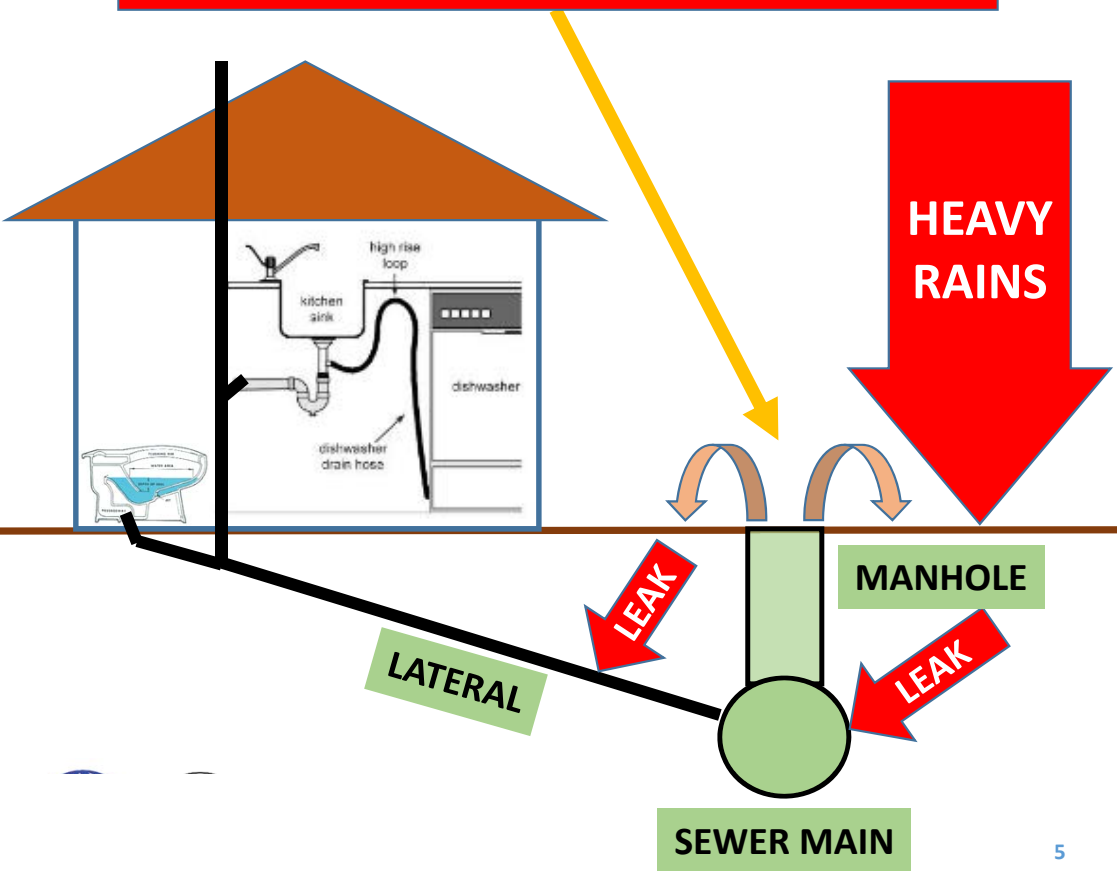


Aging Wastewater System Infrastructure



Peak Wet Weather Conditions & Insufficient Capacity

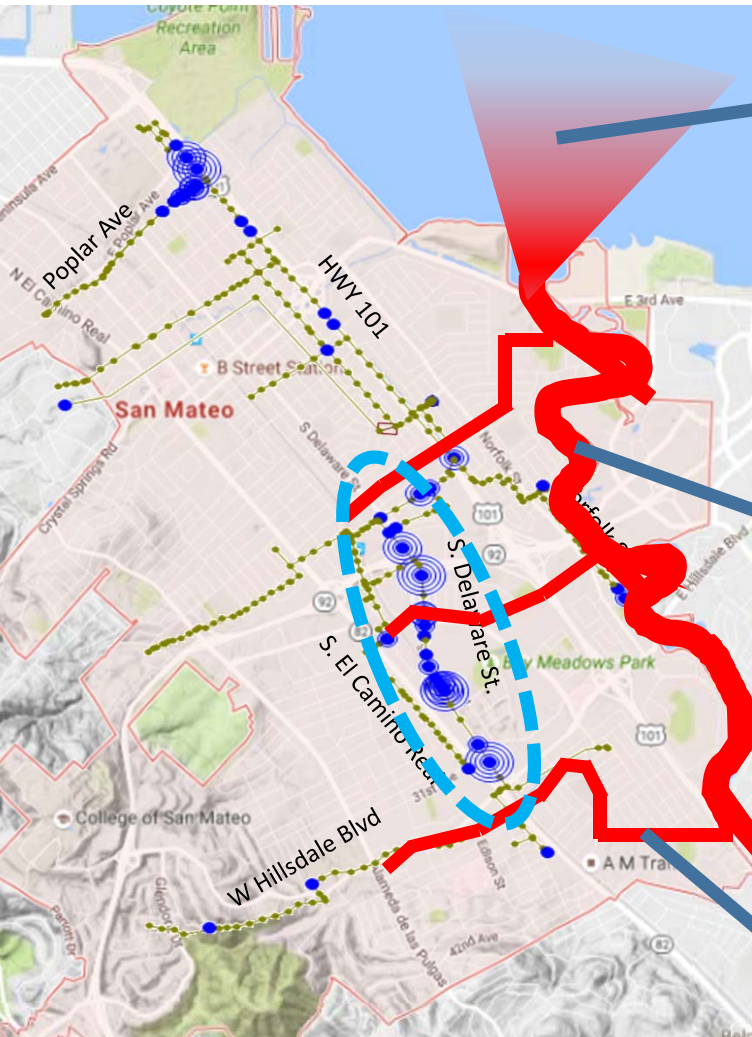
Sanitary Sewer Overflow (SSO)



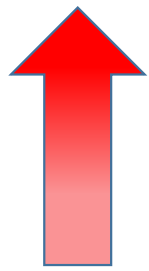
What Causes Sewer Overflows?
*Sewage, PLUS unintended
Rain Water Entering the System*



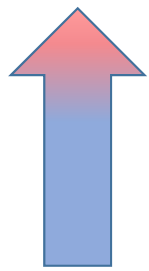
Sewer Overflow Impacts & Regulatory Violations



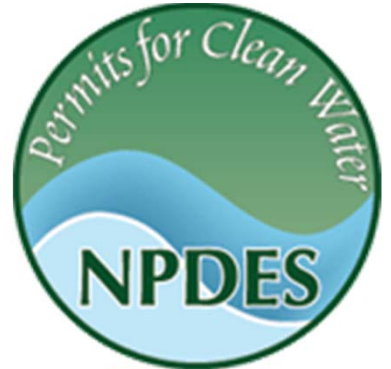
SF BAY



LAGOON



CREEKS



Clean Water Program Drivers and Goals

Replace Aging Infrastructure

Provide Higher Levels of Treatment & Capacity Assurance

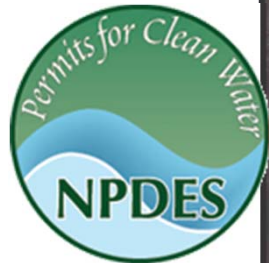
Align with City's Sustainability Goals



Collection System



WWTP



RWQCB Cease & Desist Order
NPDES Permit



Reusable
Clean Water
Partnerships



Institute for Sustainable Infrastructure



Infrastructure Sustainability Metrics



Clean Water Program

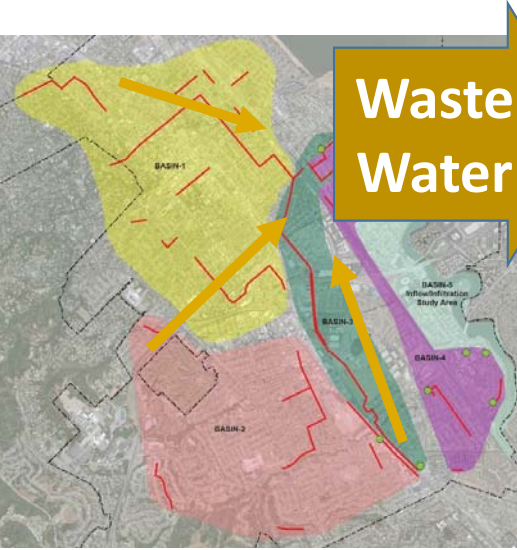
1. Collect

2. Treat

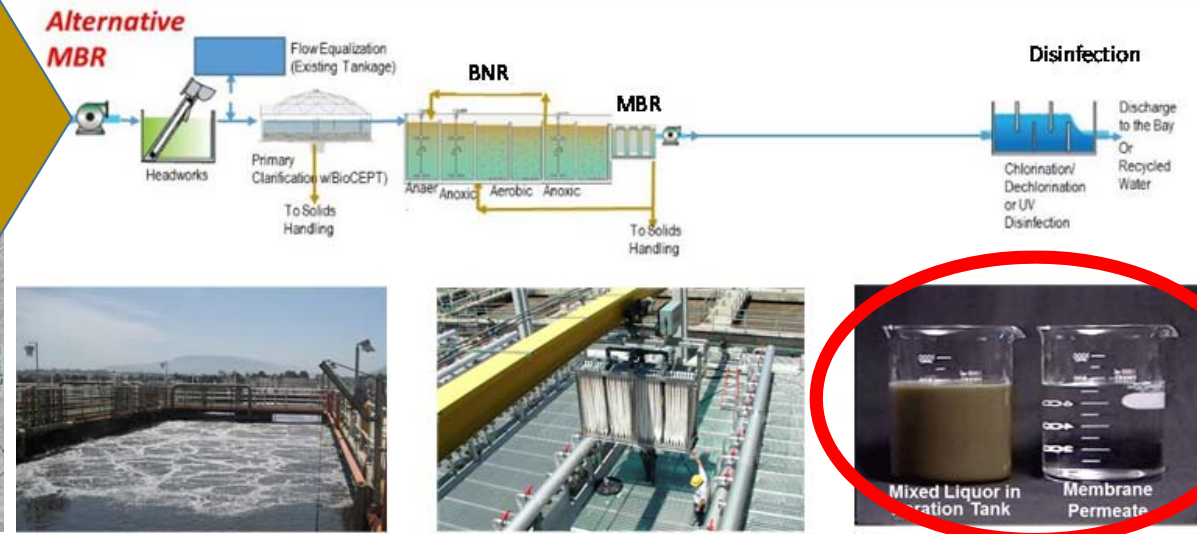
3. Discharge

Pipe, Pump Station, & In-System Storage Upgrades to Prevent SSOs

New WWTP Treatment Approach to Prevent Sewer Overflows to SF Bay



Waste Water



Before & After Treatment



WWTP Upgrade & Expansion Project Update






WWTP Site Location and Vicinity



WWTP Site Location



WWTP Site Layout

-  Aging Existing Facilities to be Replaced
-  New Facilities
-  Existing Facilities to be Rehabilitated/Repurposed



WWTP Conceptual Renderings



WWTP Conceptual Renderings



WWTP Conceptual Renderings



Construction – Phase 1

Site Preparation

Existing Site - Wide Angle View Photo taken August 2018

Seal Point Park

San Francisco Bay

J Hart Clinton Dr / 3rd Ave

Detroit Dr.

Detroit Drive Site
WWTP Upgrade & Expansion
Project Site

Detroit Dr.

Existing
WWTP



Existing Site – Aerial View

Google Maps Satellite Capture



Phase 1 – Site Preparation

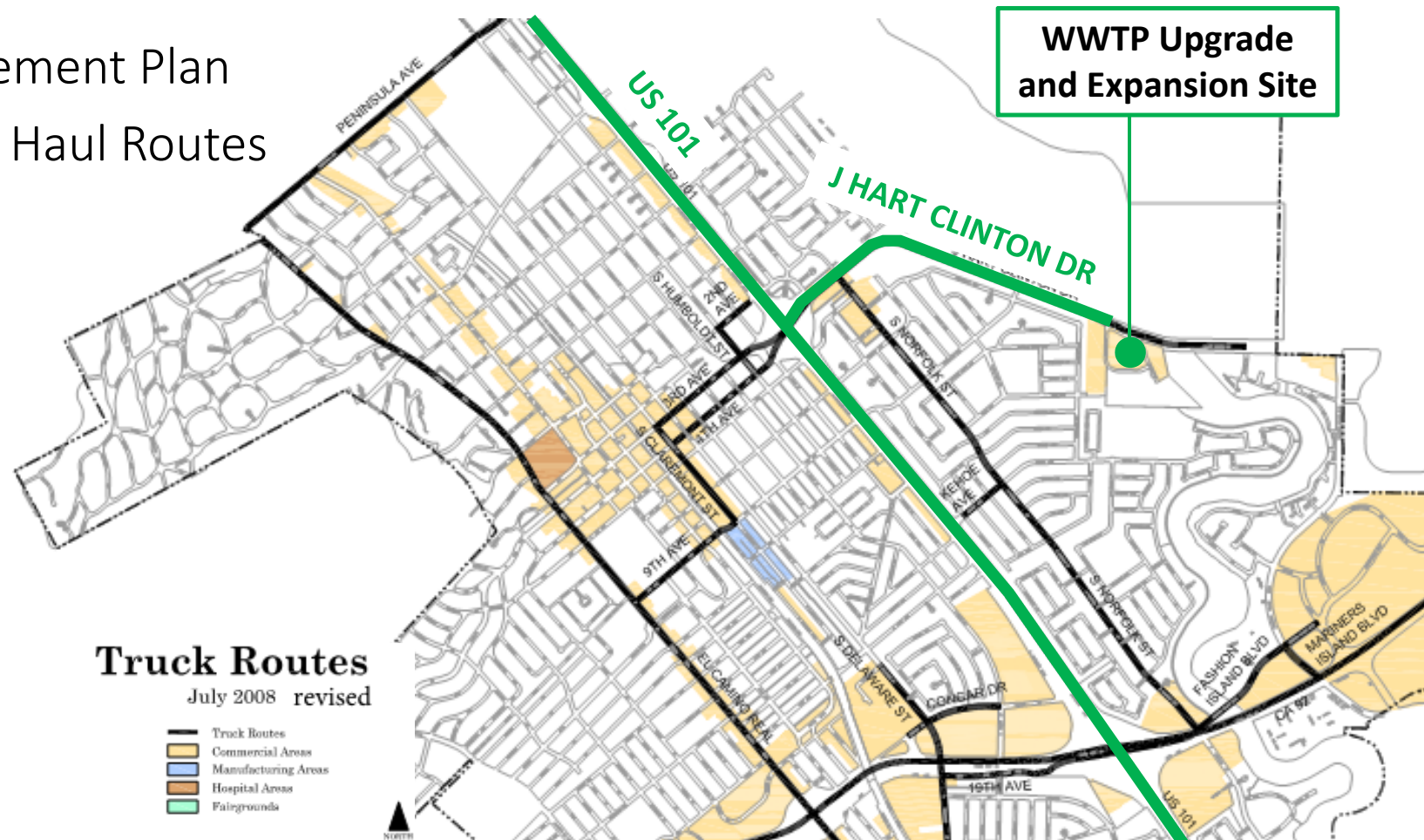
- Work includes:
 - Demolish retired facilities
 - Mass Excavation
 - Dewatering System
 - Construction Trailers Setup
- Schedule:
 - Approximately 10 months starting Spring 2019



Conceptual Rendering of Phase 1 Construction Work

Phase 1 – Construction Traffic Mitigation

- Traffic Management Plan
- City Approved Haul Routes



Phase 1 - Dust Mitigation



Cover Hauling Trucks



Wet Sweeping



**Rumble Strips at
Construction Site Exits**

Phase 1 – Anticipated Noise & Vibration

- Typical construction noise expected
- Vibration potentially during demolition activity



Phase 1 - Ped/Bike Access Route Alternatives



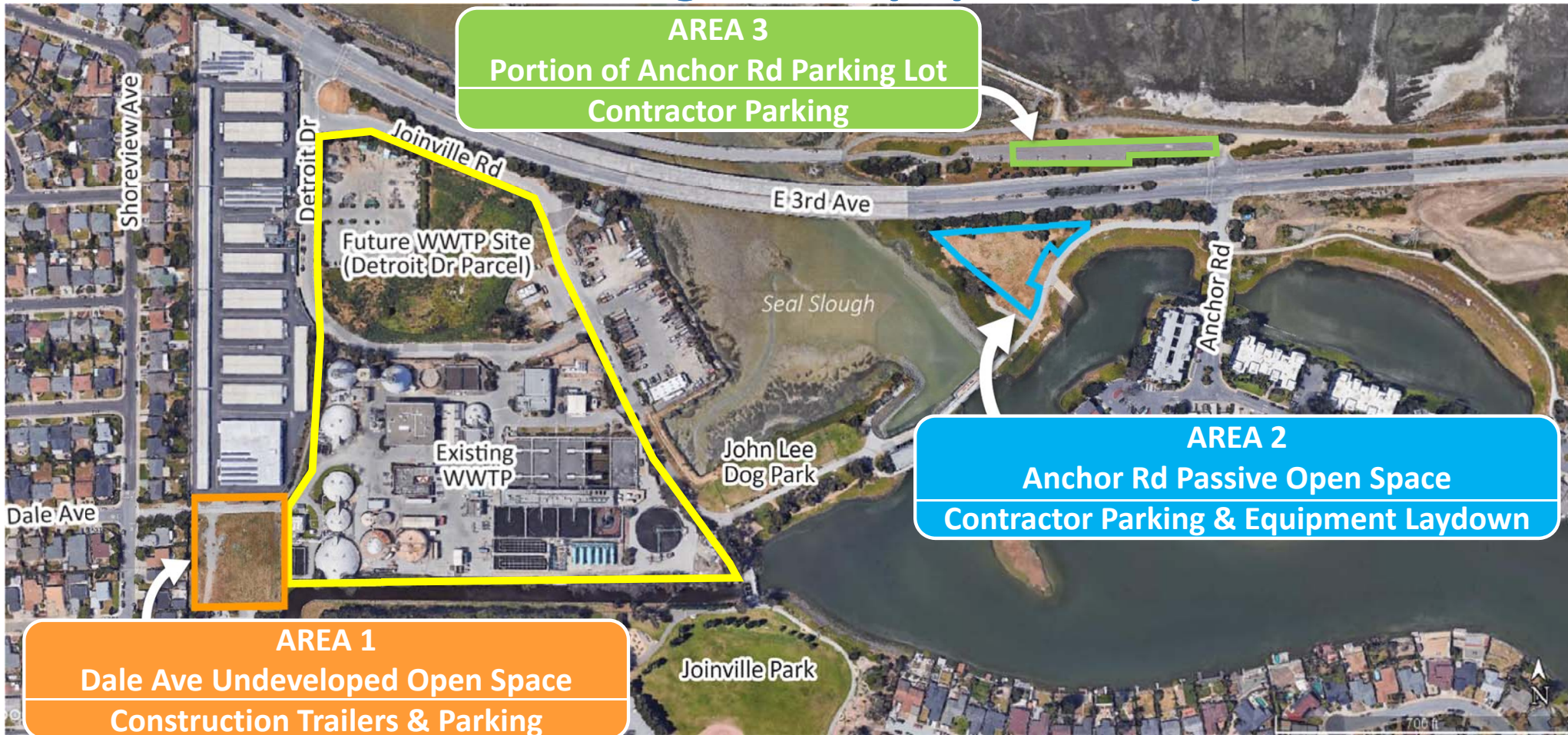
Phase 1 Parking Restrictions & Accommodations

 No Public Parking during Construction

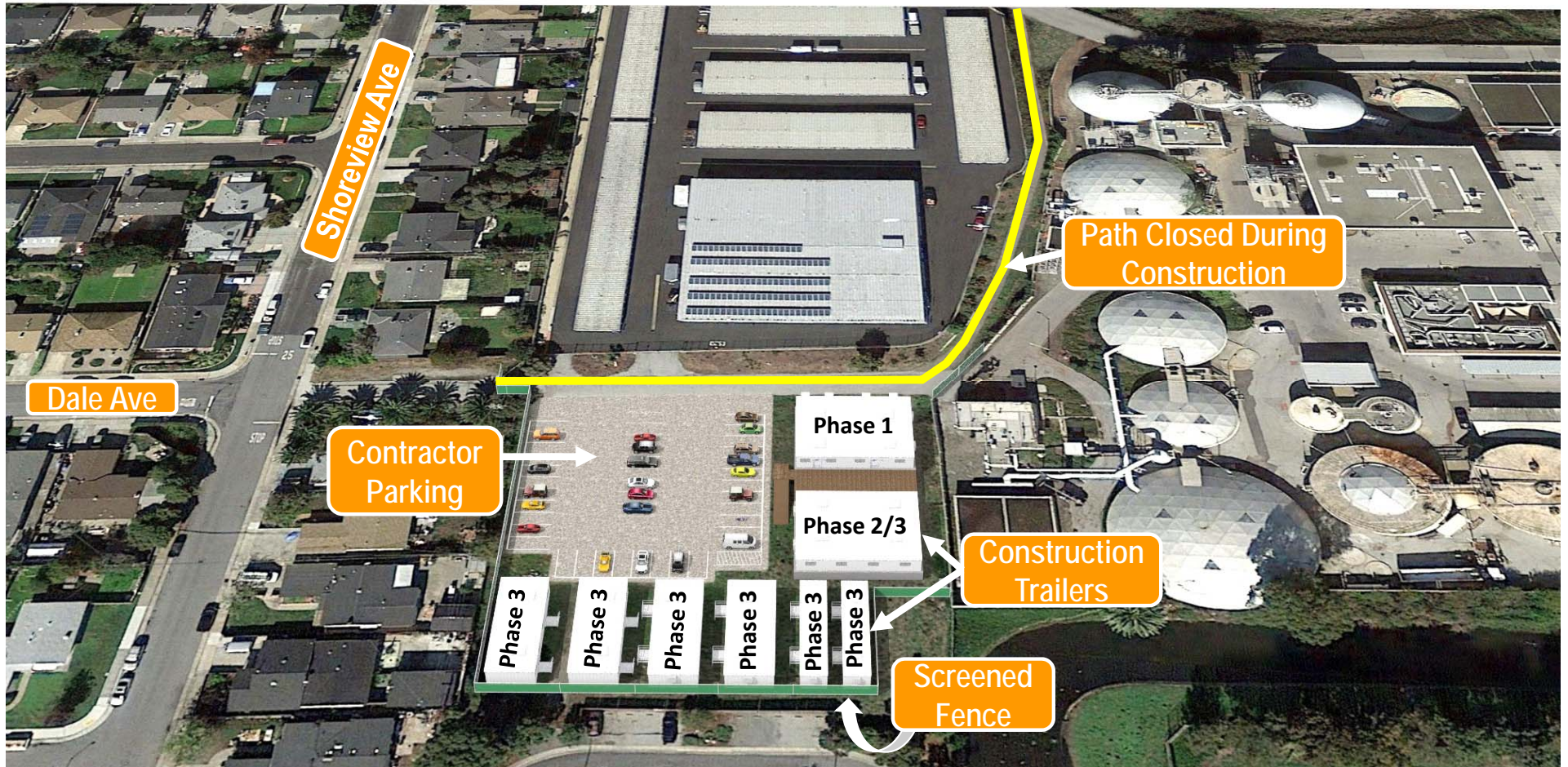
 Alternative Parking & Facilities



Phase 1 - Staging of Construction Trailers, Contractor Parking, and Equipment Laydown



Phase 1 – Setup Staging Area 1 Conceptual Rendering



Future Construction Phases 2 & 3

Phase 2 – Build the Foundation

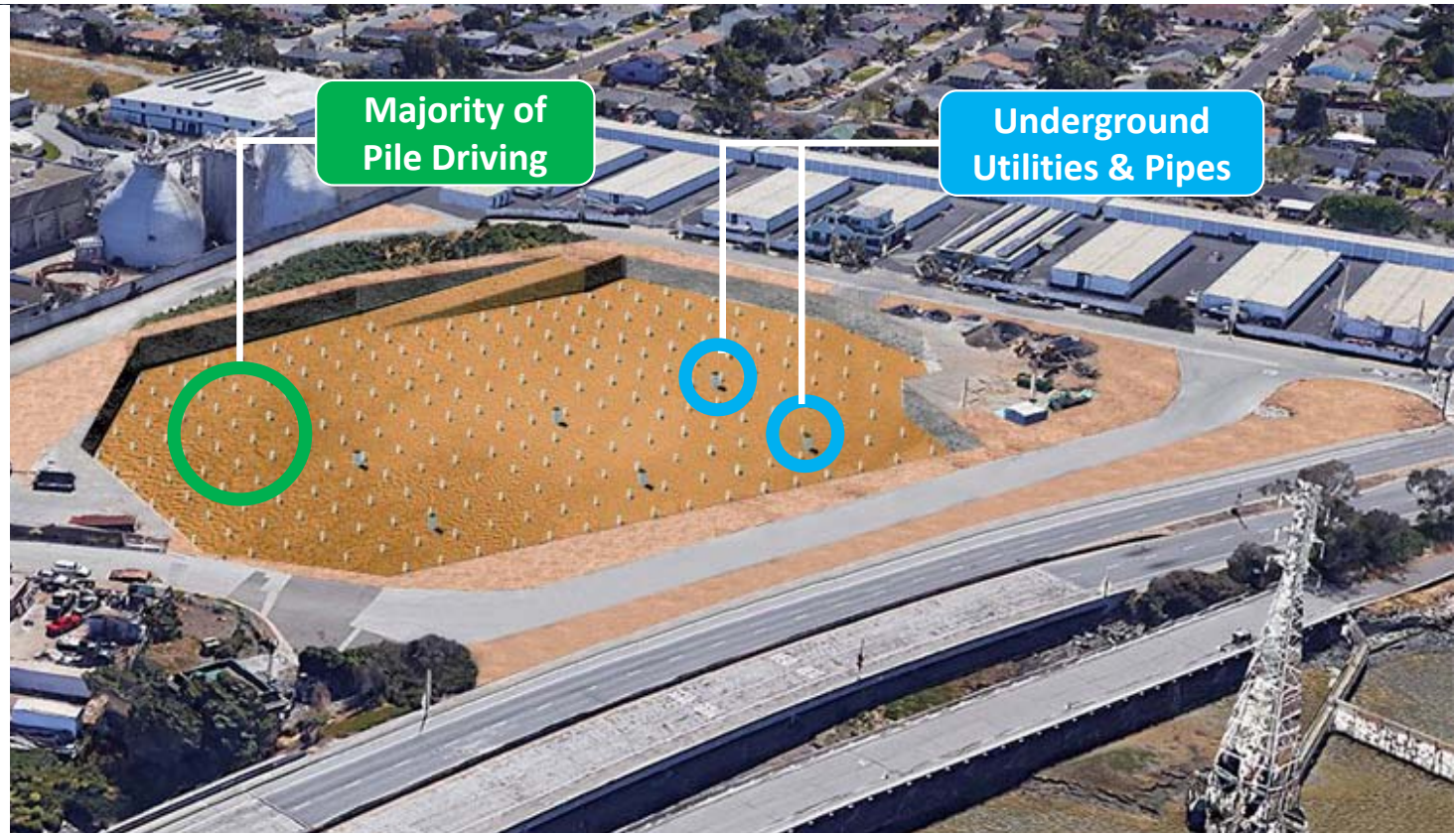
Concept Rendering of Phase 2 Completed Work

- Work includes:

- Majority of Pile Driving
- Underground Utilities and Pipes

- Schedule:

- Tentatively starting Fall 2019 and would last approx. 6-8 months
- Work overlaps with the Phase 1



Phase 3 – Build the WWTP Facilities

Concept Rendering of Completed Project

● Work includes:

- New Treatment Facilities
- Administration Building
- Additional Pile Driving
- Street and Landscape Improvements
- Demobilization

● Schedule:

- Tentatively planned to start Summer 2020
- Work overlaps with Phase 2



Construction duration for all three phases is approx. 5 years total

How to Stay Informed and Provide Input

Sign Up for Email Updates

info@CleanWaterProgramSanMateo.org

Register for Private Neighborhood Updates

www.NextDoor.com

Contact Us

www.CleanWaterProgramSanMateo.org

650-727-6870





Q&A Session