



Upcoming Construction: Pump Station Improvement Project

Virtual Community Meeting
June 25, 2025





Introductions



Matt Fabry
Public Works Director



Tom Williams
Engineering Manager



Laura Webb
Project Manager



Zoom Webinar Information

Questions will be answered live after the presentation

- How to ask a question:
 - During the presentation, you may type questions using the Q&A function.*
 - These questions will be answered at the end of the presentation.*
 - At the end, attendees may ask verbal questions by clicking 'raise your hand.'*
 - For Phone-in participation, press #9 to raise your hand.*
- Question order and length:
 - Questions will be asked one at a time and in order.*
 - Please limit your question to 1 minute.*
 - Questioner will be muted while speaker responds.*
 - If you have a follow-up question, please click 'raise your hand' again.*
- Recording: This meeting is being recorded. By joining this meeting through Zoom you agree to be recorded.



Presentation Overview

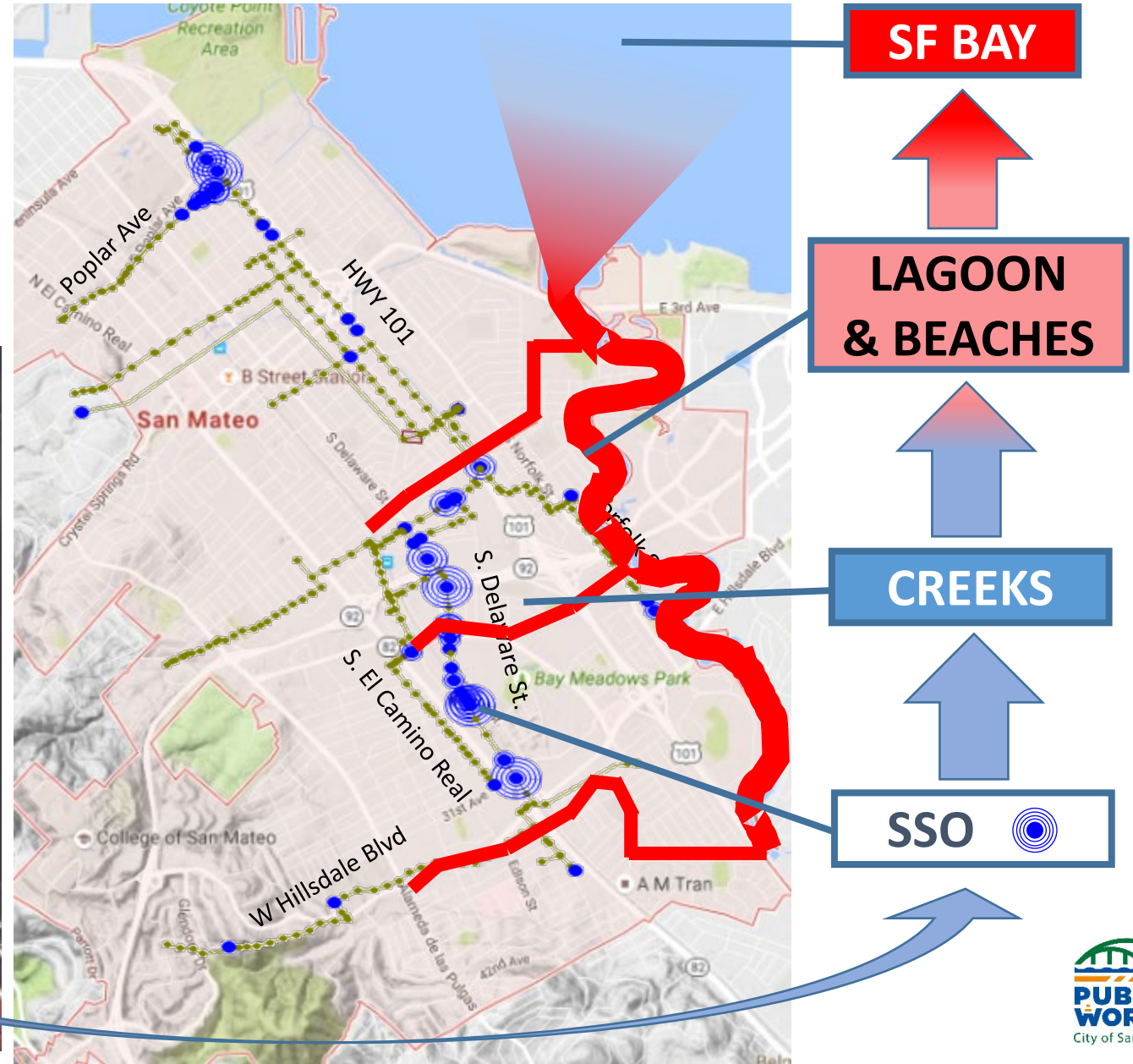
- Clean Water Program
- Los Prados No. 1 and 2
- Kehoe-Kelly
- Arroyo
- Questions and Answers



Wet Weather Impacts and SSOs

What Causes Sanitary Sewer Overflows?

*Raw Sewage, PLUS
Unintended Rain Water
Entering the System*



San Mateo Clean Water Program



Replace aging infrastructure and facilities



Build wet weather sewer system capacity assurance to prevent overflows



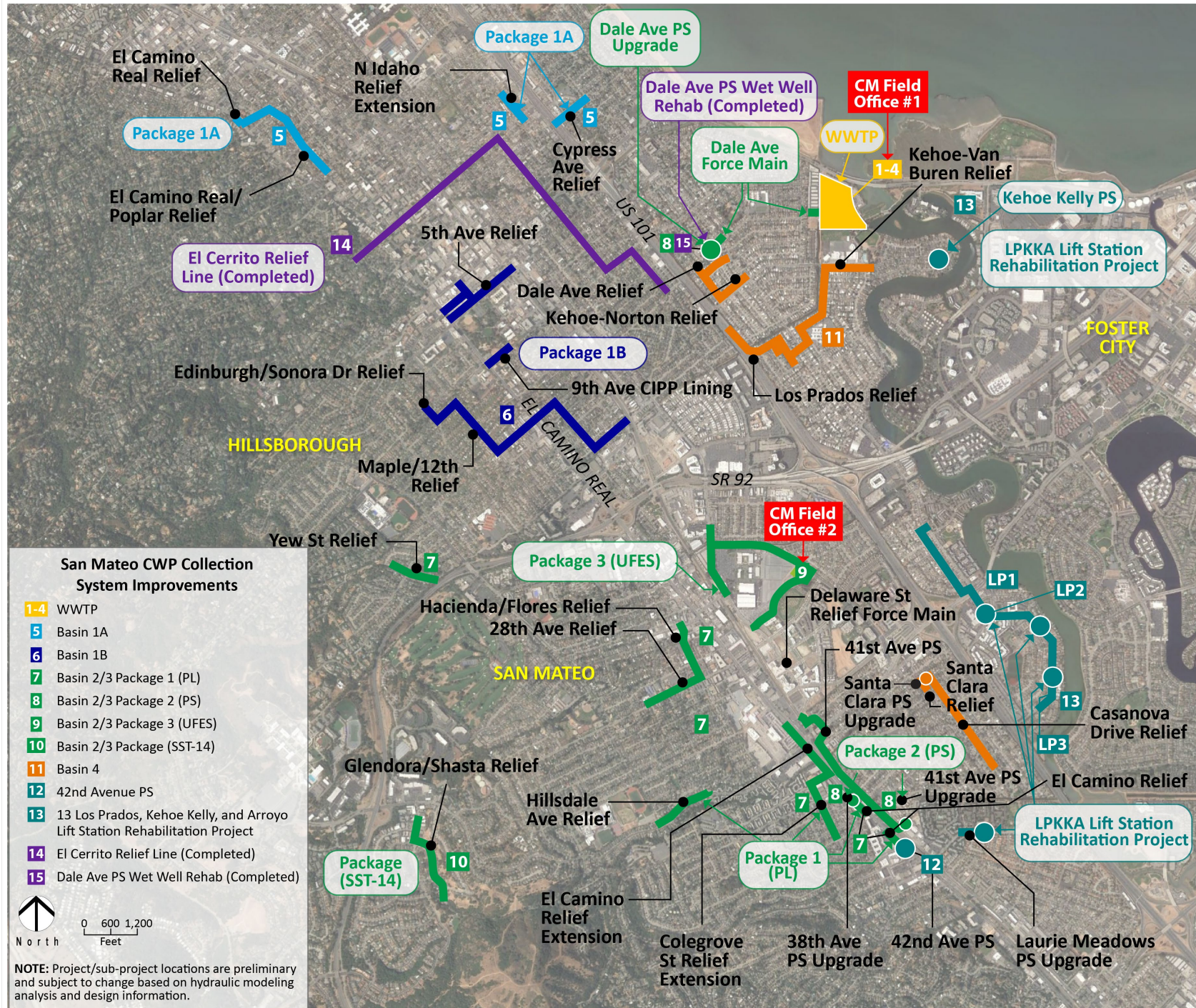
Meet current and future regulatory requirements



Align with the City of San Mateo and Foster City's sustainability goals



- 



Program Status

Legend

Pipes ————
Lift/Pump Stations ● ● ●

Color Coded Status

Completed

In Construction

In Design/Planning

WWTP = Wastewater Treatment Plant

UFES = Underground Flow Equalization System

Notes:

Anticipated Program completion in FY 25/26.

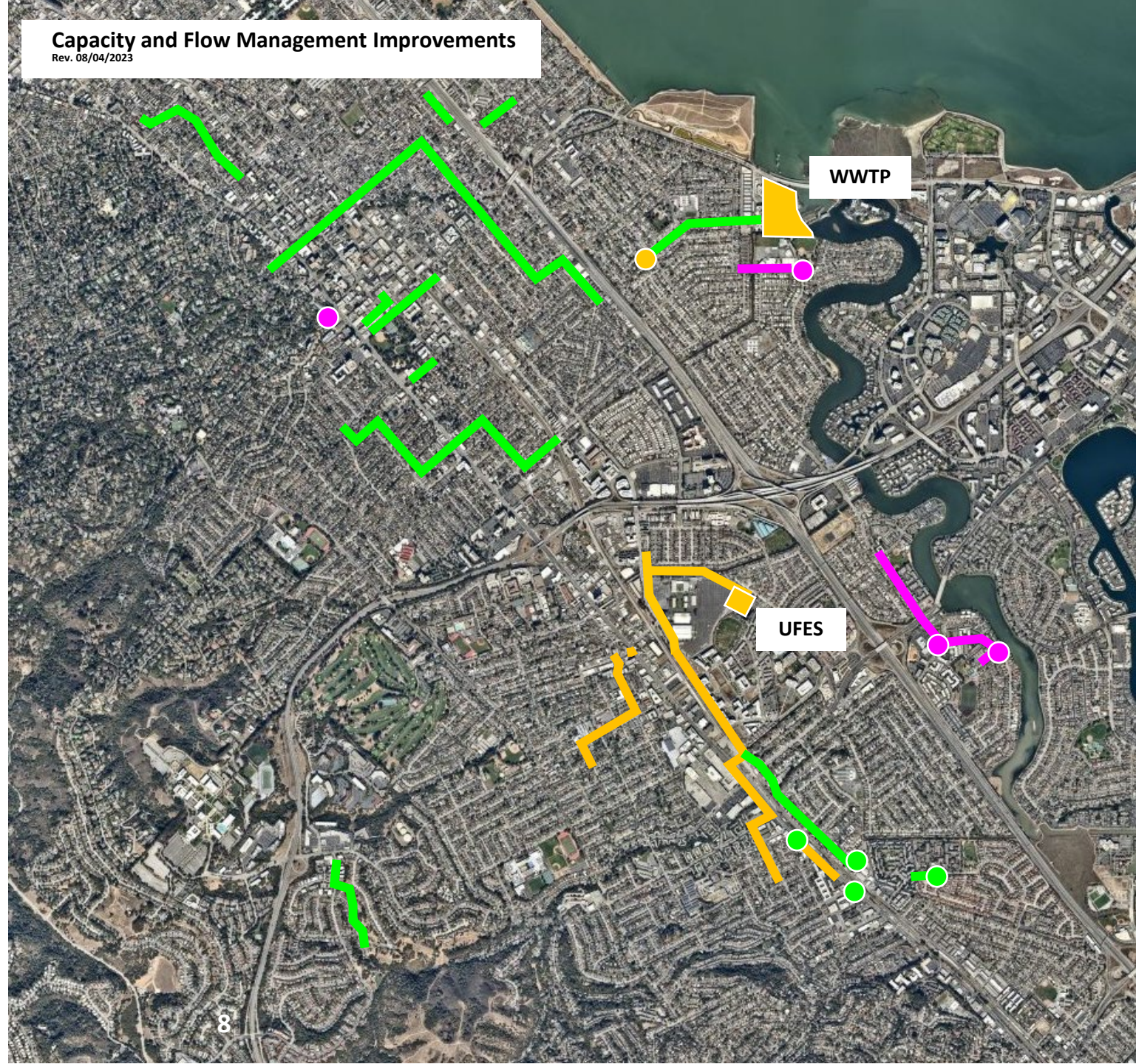
Annual CCTV and Rehab Projects Not Shown.

Some project segments were eliminated due to design optimizations.



Capacity and Flow Management Improvements

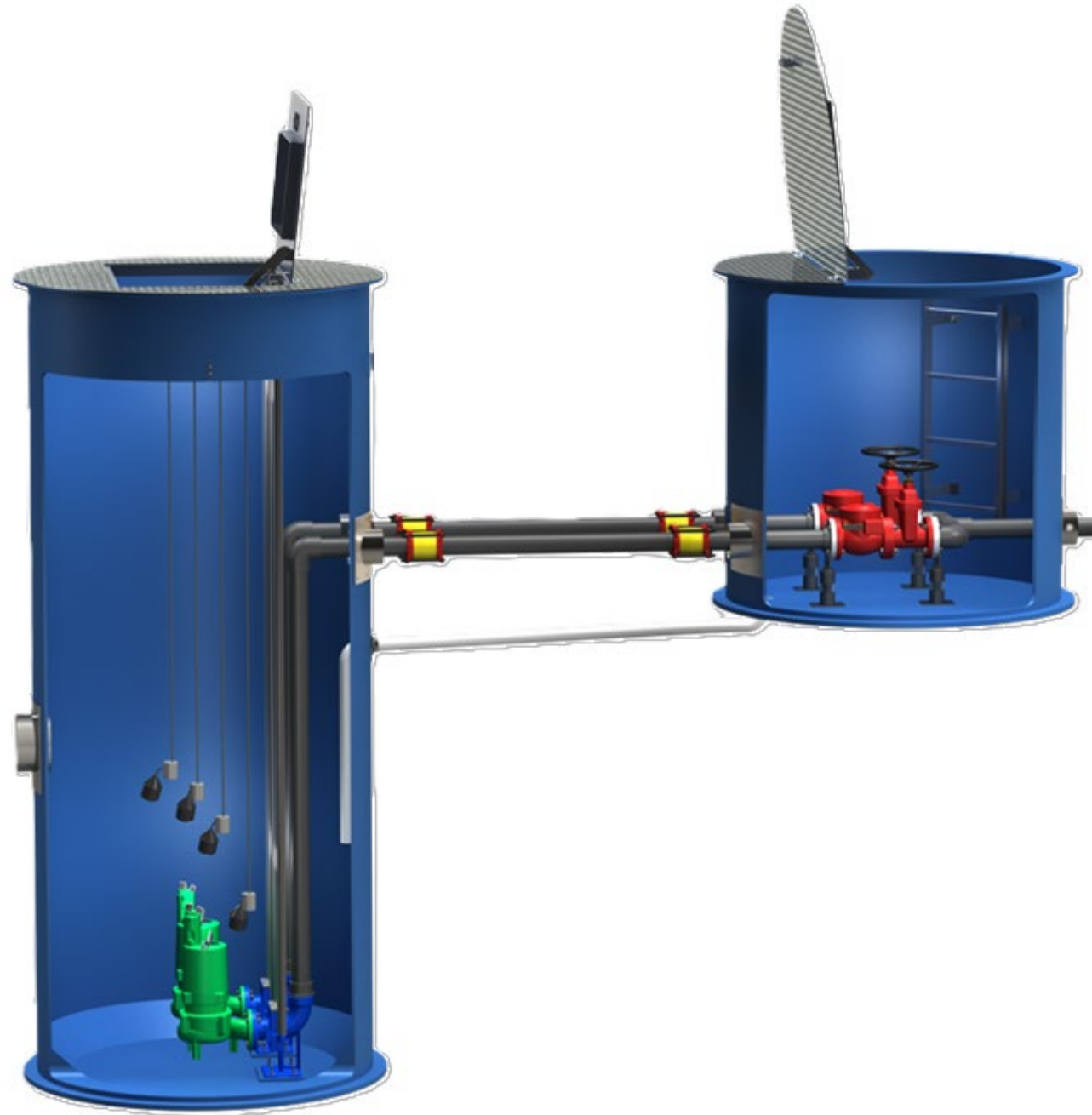
Rev. 08/04/2023





Wet Well

Valve Vault



Pump Station Example



Los Prados No. 1



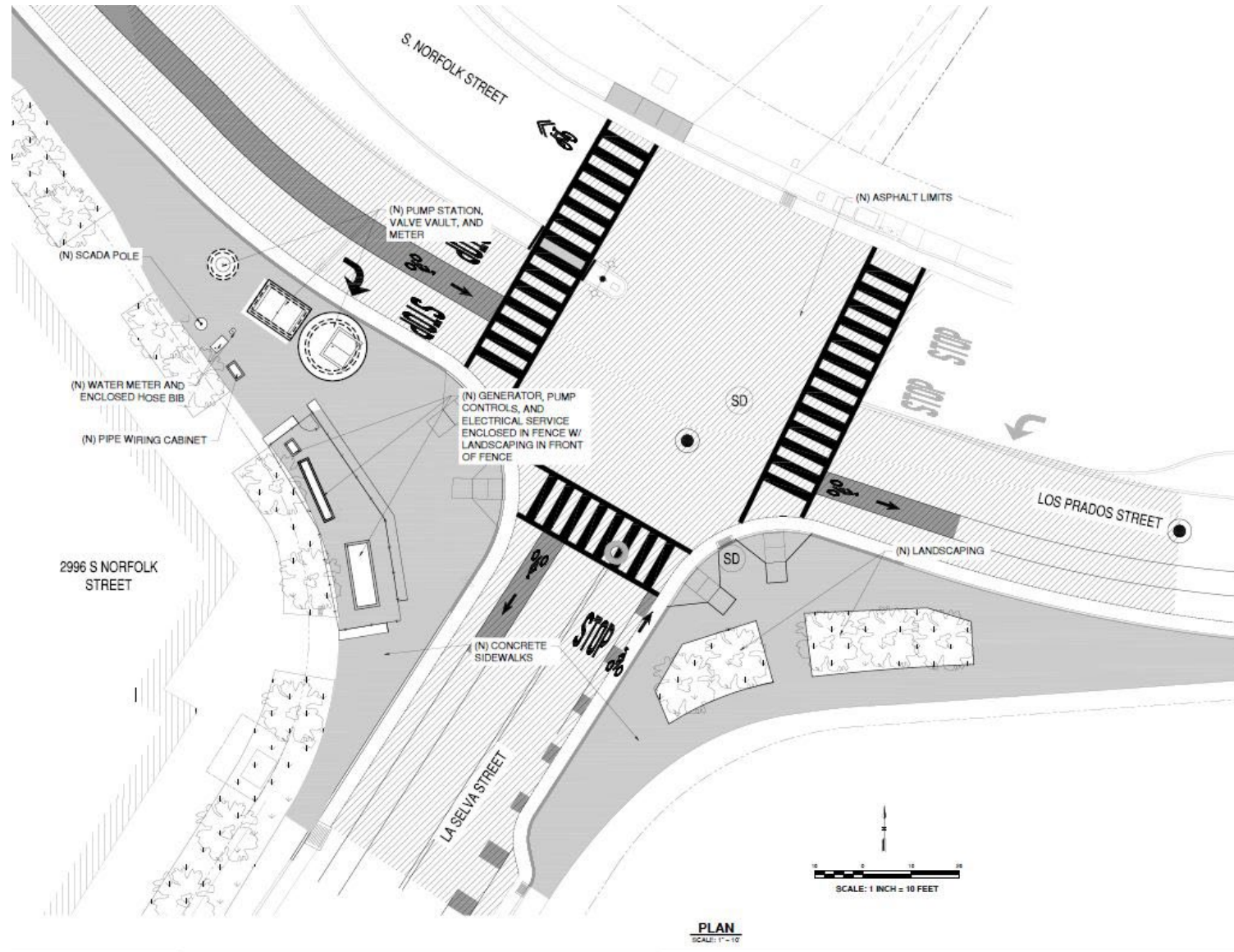


Nearmap

Thu Feb 20 2025
Imagery © 2025 Nearmap, HERE

Norfolk-LaSelva-Los Prados Intersection

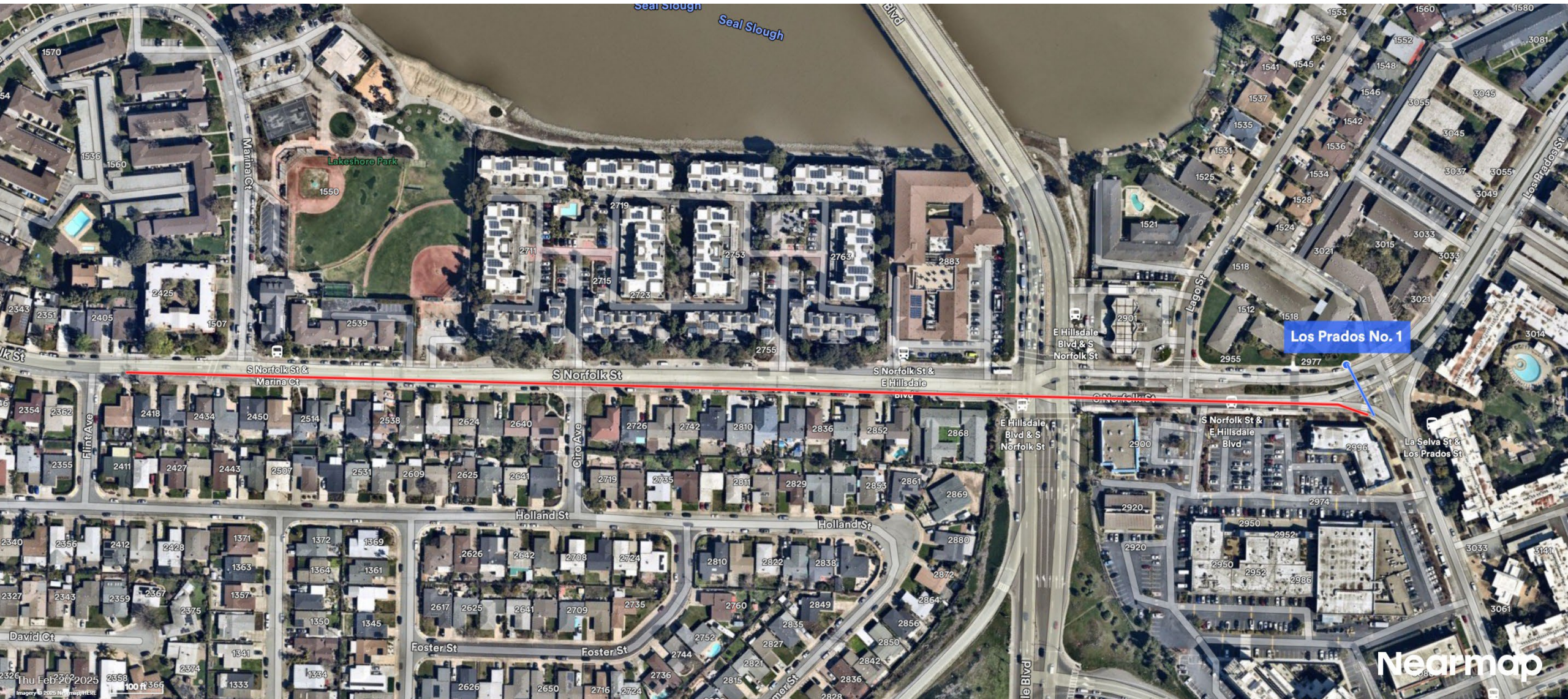






Norfolk-LaSelva-
Los Prados Intersection





Los Prados No. 1 Force Main





Los Prados Gravity Sewer



Los Prados No. 2 (to be eliminated)

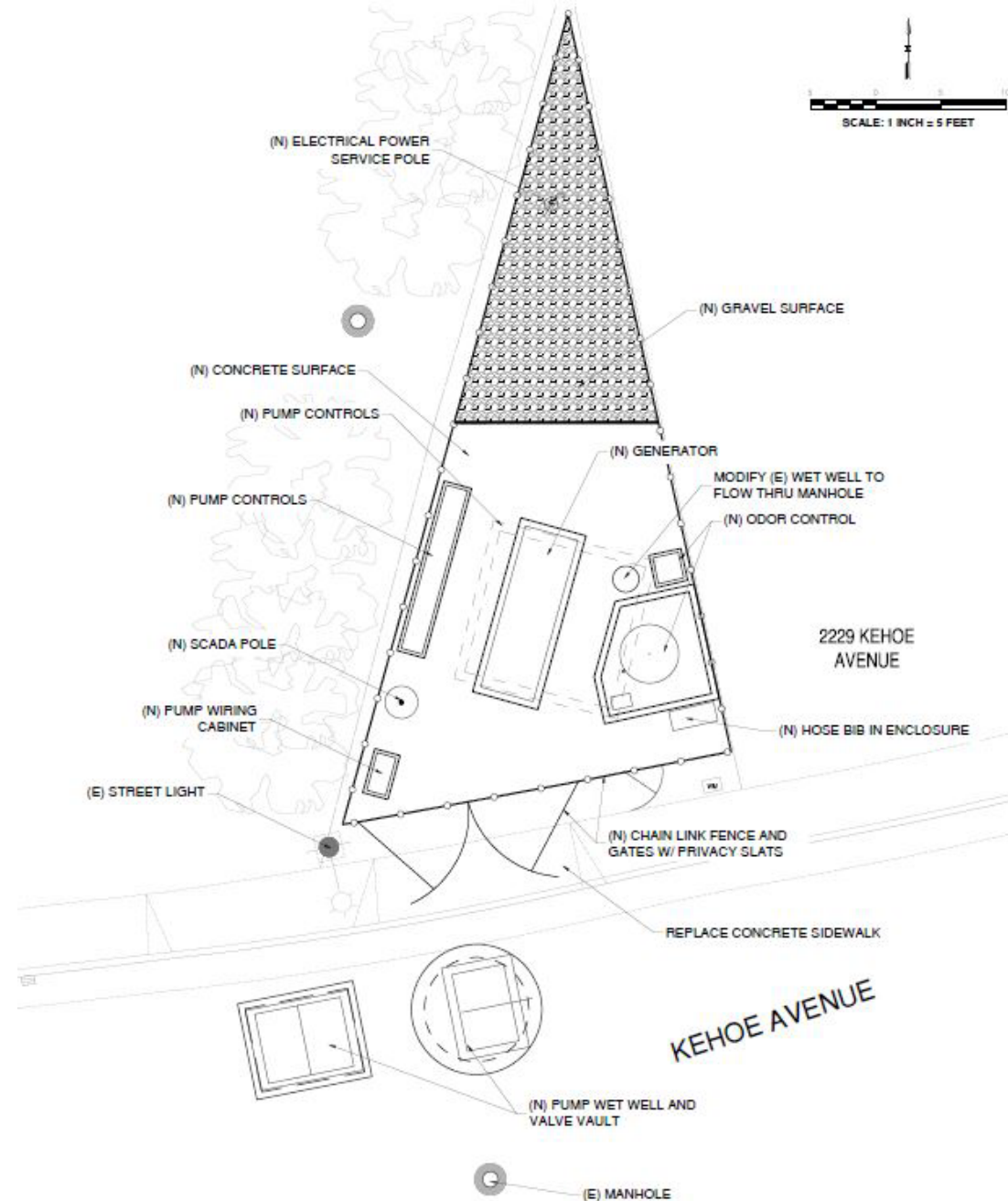


Kehoe Kelly





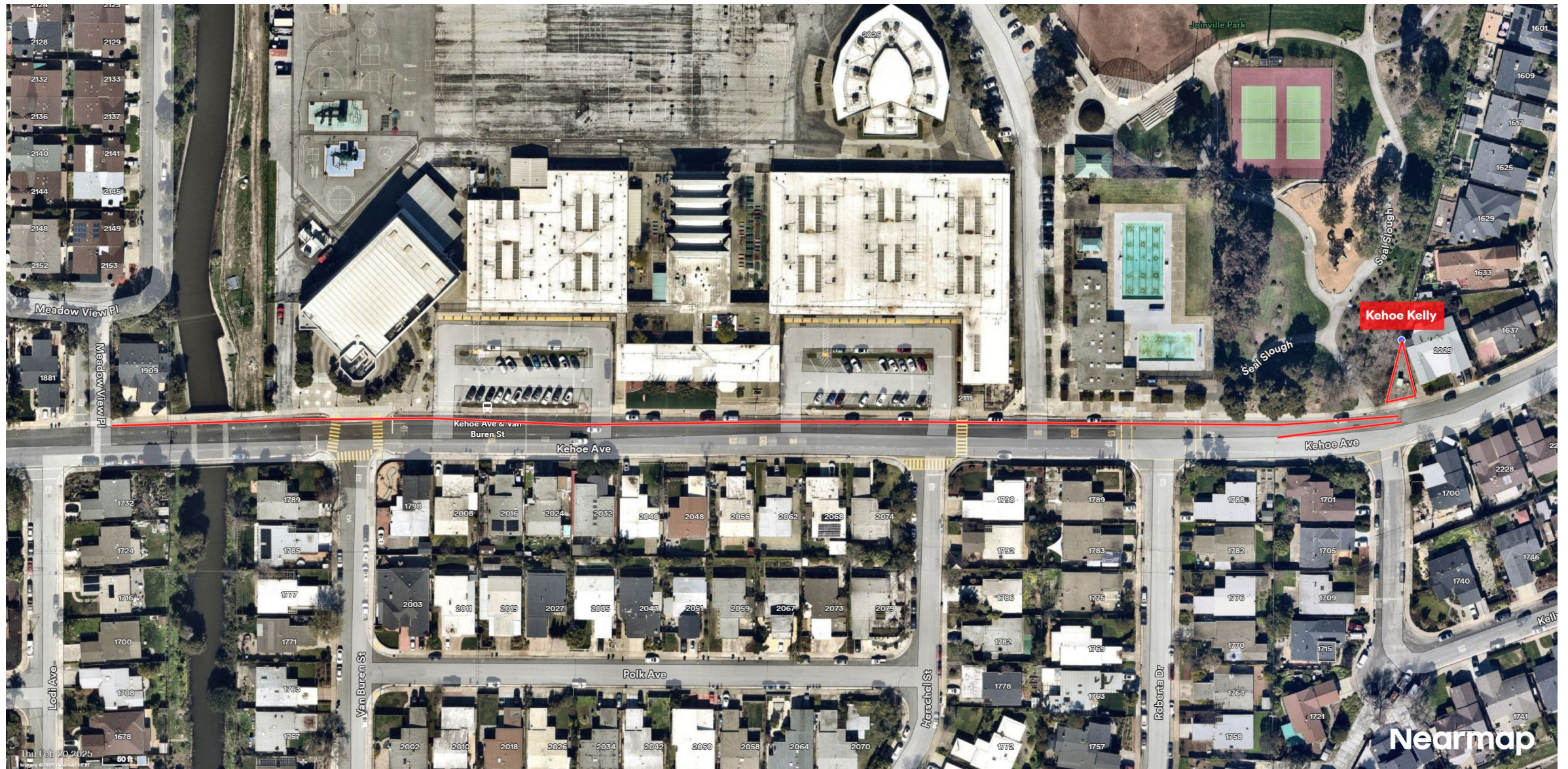
Kehoe Kelly



PLAN
SCALE: 1" = 5'







Kehoe Kelly Force Mains

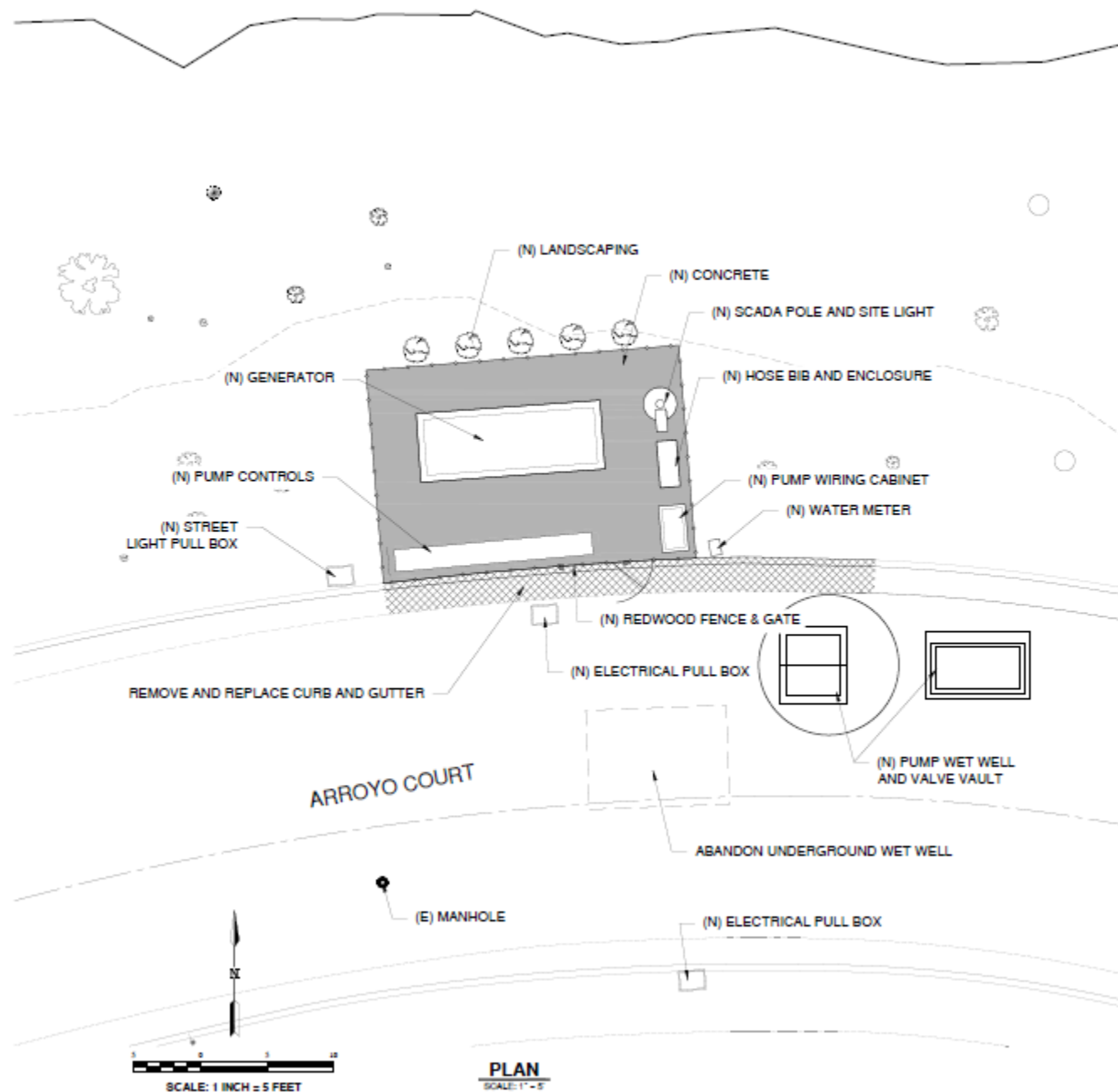




Arroyo Lift Station



Arroyo Lift Station





Construction Schedule

September 2025 to Spring 2027

Arroyo Lift Station site work is restricted by permit to mid-June to mid-October. The pipeline work can occur at other times.

Other work may be restricted by site conditions such as high groundwater.

Work hours will be restricted for pipeline work in Kehoe Ave at Bayside Academy and in El Camino (per CalTrans) at Arroyo Ct.



Reminder



Replace aging infrastructure and facilities



Build wet weather sewer system capacity assurance to prevent overflows



Meet current and future regulatory requirements



Align with the City of San Mateo and Foster City's sustainability goals

Next Steps

- Virtual Community Meeting – June 25th
- Contract award – August 2025
- Notice to proceed construction – Fall 2025
- Review of contractor's schedule and Traffic control plans – Fall 2025
- Start of construction – (start is subject to weather) Fall 2025
- More public outreach throughout entire project duration

Note: Schedule is subject to change and is based on currently known information





● Questions?

- Questions using the Q&A function will now be answered verbally.
- Attendees with questions, please click '**raise your hand.**'
- For Phone-in participation, press #9 to raise your hand.

● Question order and length:

- Panelists will respond to questions one at a time and in order.
- Please limit your question to 1 minute.
- Questioner will be muted while speaker responds.
- If you have a follow-up question, please click '**raise your hand**' again.

- **Recording:** This meeting was recorded. The recording will be posted.



Thank you!

Project and Contact Information:

- <https://cleanwaterprogramsanmateo.org/lpkka-lift-station-rehab-project/>
- General Clean Water Program Hotline: (650) 727-6870
- CWP Project Manager: Laura Webb; lwebb@cityofsanmateo.org, 650.522.7322
- Engineering Manager: Tom Williams; twilliams@cityofsanmateo.org; 650.522.7307
- Public Works Director: Matt Fabry; mfabry@cityofsanmateo.org; 650.522.7309

